

Glendale District Plan

Glendale District Plan **A Complete Community**



Niagara  Region

Niagara Lake
on the border

 St. Catharines

Planning & Economic
Development Committee
September 9, 2020

Presented by

Kirsten McCauley, MCIP, RPP

Senior Planner, Secondary Plans

Kirsten.mccauley@niagararegion.ca

Associated Report

PDS 27-2020

Glendale Study Area

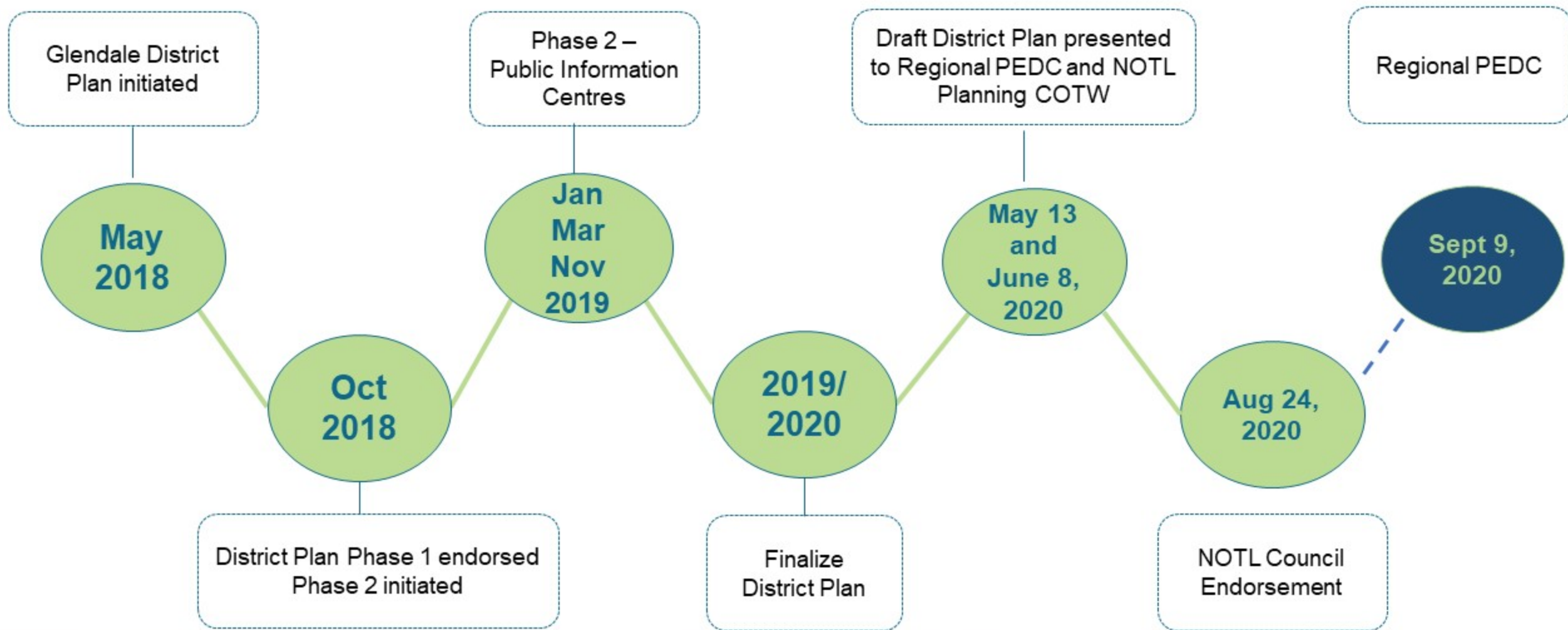
Total Study Area:
Approx. 700 ha

Urban Area:
370ha

Rural/Agricultural
Area: 330



Glendale District Plan Process Timeline



Engagement Highlights

Public Information Centres	Date
Phase 1 Kick-Off Visioning	June 24 and 25, 2018
Phase 1 Vision and Preferred Concept	August 16, 2018
Phase 2 Kick-Off	January 31, 2019
Phase 2 Land Use Options	March 27, 2019
Phase 2 Draft District Plan Info	November 20, 2019

Appendix 3 outlines the extensive amount of consultation undertaken.

- ✓ 6 days of public engagement sessions
- ✓ 6 Technical Advisory Committee meetings
- ✓ 3 Community Focus Group meetings
- ✓ Stakeholder and landowner one-on-one meetings
- ✓ Email notifications and newspaper notices
- ✓ Crowdsourced online commenting platform and survey

Vision Statement

Glendale District will be a vibrant community for people of all ages, lifestyles, and abilities - a place to live, work, play, learn and grow.

Its urban districts, with a mix of uses, will protect, integrate and celebrate the natural and rural surroundings reflecting the distinct character of the area.

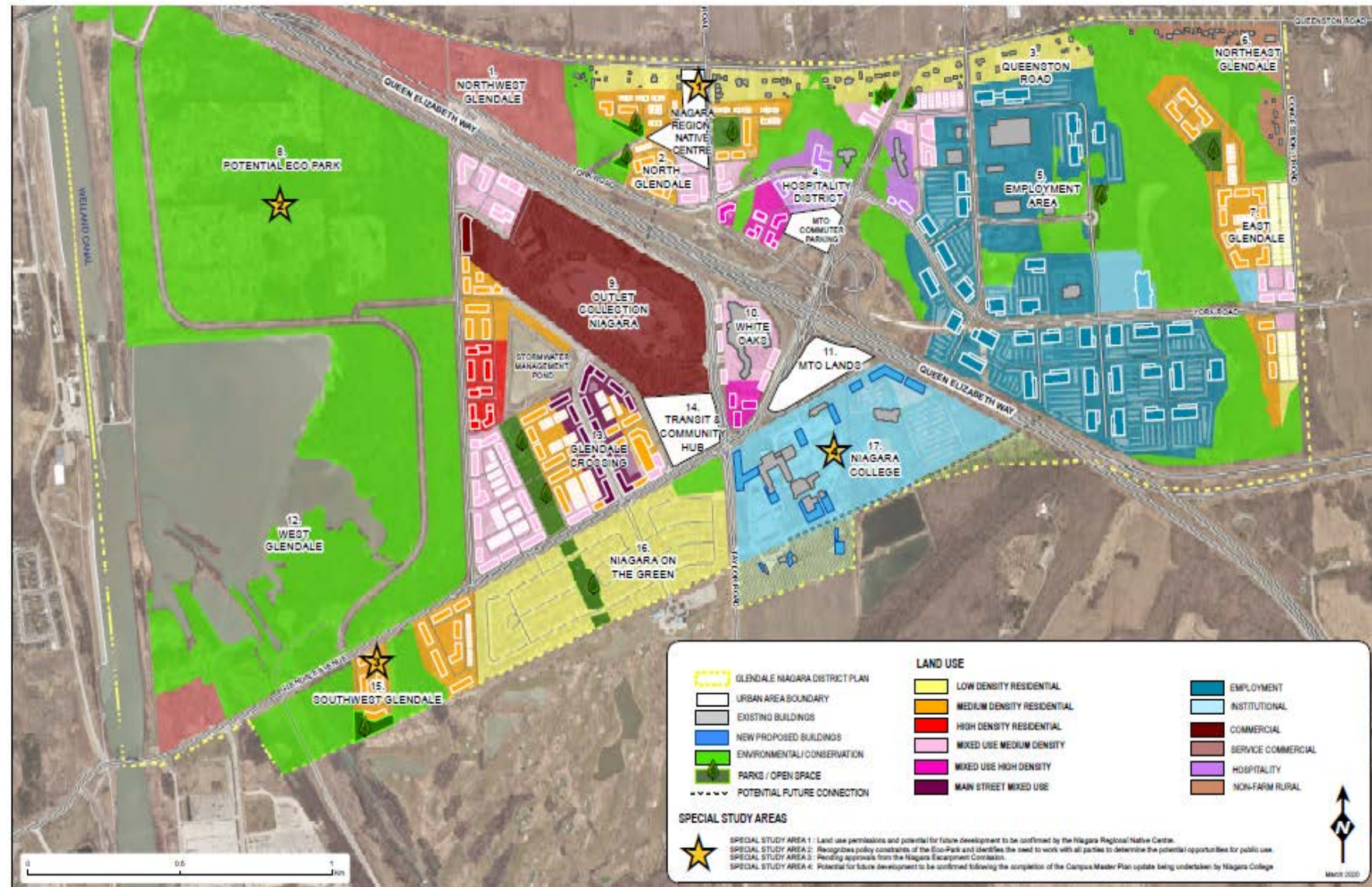
Glendale District will be framed by green space along the Welland Canal, the creek valleys, the Niagara Escarpment and agricultural lands.

Glendale District will put mobility first with a robust transit system, cycling trails and pedestrian routes seamlessly connecting areas north and south of the QEW.



Demonstration Plan and Key Directions

- 1:** Protect/enhance natural features
- 2:** Trails and active transportation
- 3:** Connected transit system
- 4:** Build on existing assets
- 5:** Create a “main street”
- 6:** Diverse range of housing
- 7:** Create public/civic space
- 8:** Use sustainability measures
- 9:** Coordination of infrastructure



Main Street and Community/Transit Hub



Urban Design Rendering and Perspectives - For Illustration Purposes Only

District Plan Summary

Endorsement of the Plan confirms the vision and commitment to Glendale becoming a complete, urban community. It provides a guide for the growth and transformation through implementation of the 47 strategies identified in the 9 key directions.

Next Steps:

- Regional Official Plan Amendment (ROPA) process
- Work with NOTL on the Secondary Plan update
- Work with the Technical Advisory Committee (TAC) for ongoing implementation

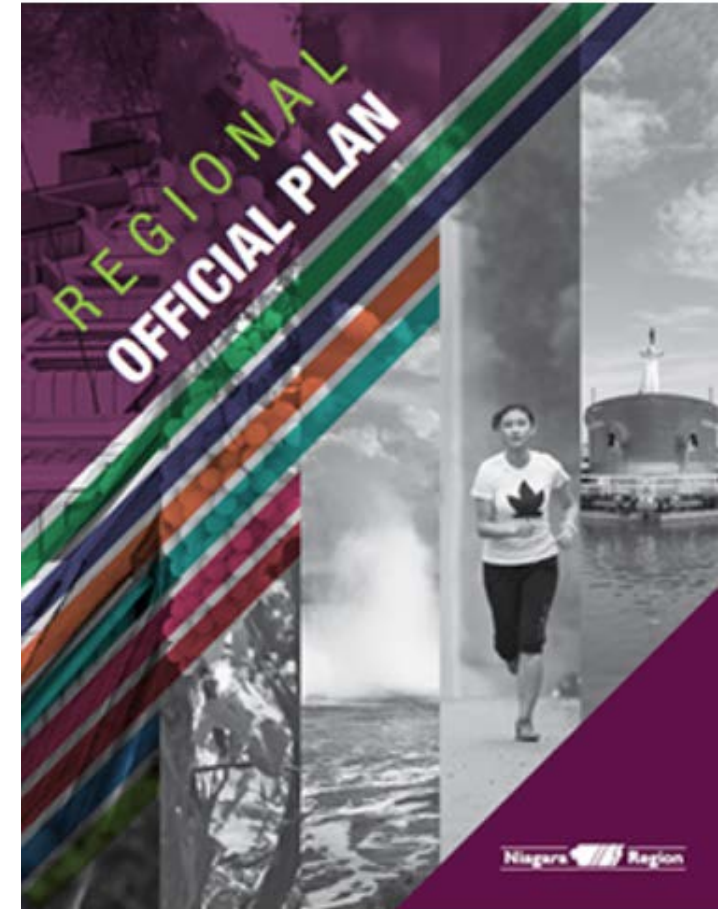
Regional Official Plan Amendment

Purpose

Amend the Regional OP to include:
Glendale's Vision
Key Elements
Regional Planning Mandate

Timing

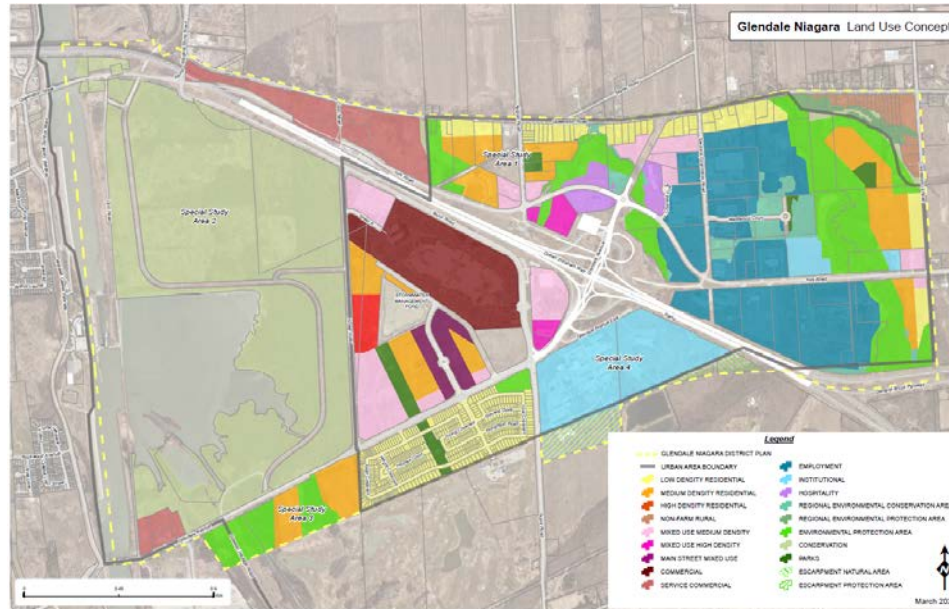
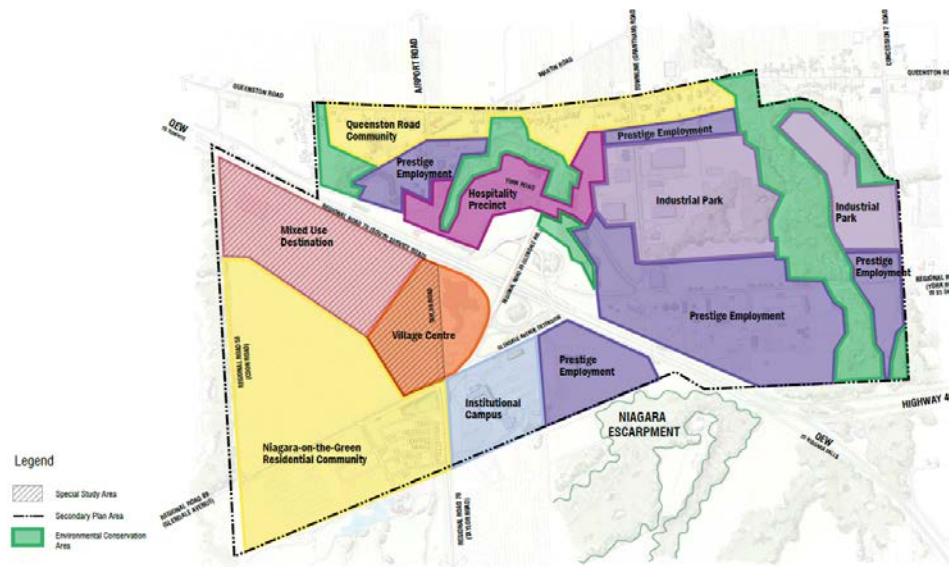
Fall 2020



Glendale Secondary Plan Update

Future work will confirm:

- Building heights/densities
- Population and employment forecasts
- Traffic and transportation analysis
- Refinement of land use boundaries
- Capital and operating costs/investment



Existing Glendale Secondary Plan to be updated.

Technical studies, including infrastructure and transportation review, will inform direction on built form and updated policy.

Technical Advisory Committee

Success relies on ongoing collaboration to implement the strategies and recommendations of the 9 key directions.

TAC membership will include a number of interested agencies, including the following:



Coordination of Next Steps

**Fall/Winter
2020/21**

ROPA adopted

Commence Glendale
Secondary Plan update

2021

Additional
engagement
through the
Secondary Plan
process

**Fall/Winter
2021/22**

Secondary Plan
adopted

Ongoing

Implementation
work with
Technical Advisory
Committee