
MEMORANDUM

PDS-C 8-2021

Subject: 2021 Public Realm Investment Program Launch

Date: February 17, 2021

To: Planning and Economic Development Committee

From: Vanessa Aykroyd, Landscape Architect

The purpose of this memorandum is to inform the Planning and Economic Development Committee that on February 1, 2021, staff launched the 2021 Public Realm Investment Program (PRIP).

At this time, local area municipalities are invited to submit applications for funding requests to the 2021 PRIP program.

This year, the PRIP will seek to award up to \$350,000 of matching funding to local area municipalities for public realm enhancement projects along regional roads and in areas of significant Regional capital investments. The 2021 PRIP builds on the program success of the past five years delivering impactful and transformative projects across the region. Through the program, funding for 27 public realm enhancement projects has been committed across nine of Niagara's communities. Since 2016, close to \$1,250,000 of funding has been committed to municipal projects worth over \$6.4 Million dollars in total capital investment in the public realm in Niagara.

Highlights of the 2021 Program

- Minimum funding request of \$25,000;
- Maximum funding per project has been increased to \$150,000;
- Matching municipal funding is required;
- Local roads which feature significant Regional capital investments will be included in the program; and
- Eligible projects must have a local funding commitment and be in an advanced stage of design.

To guide municipalities through the preparation of submissions, a 2021 PRIP Application Package has been provided to local area municipalities. The program package covers: eligibility requirements, a table of eligible capital improvements, updated evaluation criteria, and payment process. The package also includes a

reference glossary of capital improvement items and streetscape treatments that can be covered through the program.

Submissions for funding through the program must include a completed application form and maintenance commitment by the municipality, and relevant detailed information such as design drawings and technical specifications a proposed enhancement.

In order to ensure that the work meets applicable operational and technical criteria, a team of Regional staff experts in urban design, landscape architecture, transportation engineering, and operations will review and evaluate eligible projects in accordance with the evaluation criteria provided in the application and Regional policies.

Key Dates:

February 1, 2021	Call for submissions – Application period opens
April 2, 2021	Application deadline
May 3, 2021	Funding notifications to applicants issued (subject to change based on quantity and quality of applications)
July 14, 2021	Funding Commitment update Memorandum to PEDC

Staff will report to the Planning and Economic Development Committee in the fall of 2021 with an update showcasing the PRIP projects completed within the past year.

Respectfully submitted and signed by

Vanessa Aykroyd, OALA, CSLA
Landscape Architect



Public Realm Investment Program

2021 Application Guide



**Urban Design and Landscape Architecture
Planning and Development Services**

Niagara  **Region**

PUBLIC REALM INVESTMENT PROGRAM

PART A PROGRAM OVERVIEW.....3

- Foreward
- Purpose
- Funding
- Eligibility

PART B APPLICATION OVERVIEW.....7

- Procedures
- Submission Requirements

PART C EVALUATION PROCESS.....9

- Documentation
- Criteria
- Funding Limits

PART D PROJECT IMPLEMENTATION.....13

- Regional Coordination/Approvals
- Design Collaboration
- Project Construction
- Project Completion

PART E GLOSSARY OF STREETScape ELEMENTS.....14

Appendix 1 Application Form

Appendix 2 Project Completion Report

Cover photo: Downtown Beamsville, Alley Mural - 2020 PRIP Award

PUBLIC REALM INVESTMENT PROGRAM

FOREWARD

2020 has been a year of great realizations. Throughout the pandemic, we have realized that outdoor public spaces have been at a premium. As we followed public health orders to limit the spread of Covid-19, such as ‘stay at home’ and physical distancing orders, we have realized that our public spaces are *more important to our civic, economic, social, and personal health and well-being* than we could have ever anticipated. We realize that our public spaces have incredible potential to contribute to revitalizing our economies and allowing social and civic participation in activities that enliven and enrich ourselves, our families, and our communities.

This past year, we’ve seen the prioritization of people over vehicles in our downtown streets. We’ve seen the importance of making space for people to physically distance from others while enabling participation in our civic, economic, and community life. As 2021 progresses, many communities are considering additional ways in which to invest in and enhance the value of these critical public spaces to ensure community and economic resiliency in the long term.

Established in 2016, the Public Realm Investment Program (PRIP) enables Niagara Region to partner and support local municipalities on capital projects that provide important public realm enhancements on over 250 kms of Regional Roads and areas of significant Regional investment in urban and core areas.

Through PRIP, Niagara Region looks forward to partnering and supporting your public realm projects with enthusiasm and in anticipation of a time in our near future when life returns to “better than normal”. Our recovery will happen in the public realm.

PART A PROGRAM OVERVIEW

“Public space has emerged as a critical lifeline for cities and their residents.”

- LAURA PETRELLA
Chief of Planning, Finance,
and Economy, UN-Habitat

“Cities should treat public spaces as what they are: fundamental building blocks of our health, social resilience, and democracy.”

- PHIL MYRICK, PPS



PUBLIC REALM INVESTMENT PROGRAM

PROGRAM PURPOSE

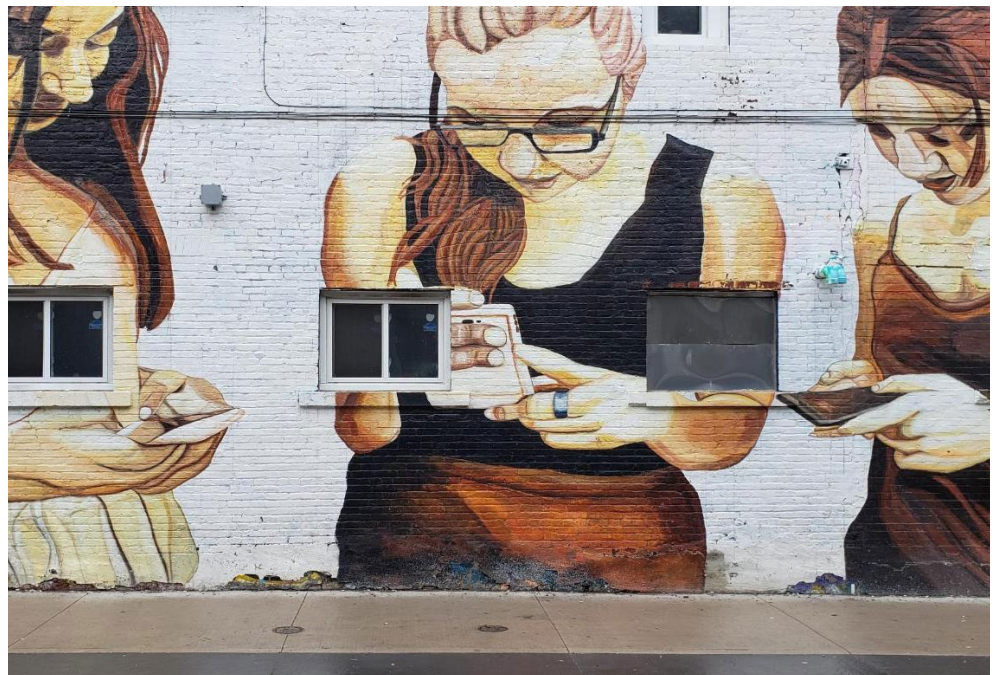
The purpose of the program is to encourage investment in the urban and core area public realms along Regional roads by providing matching funding to local municipal partners for upgrades to existing capital projects.

This contributes to attractive public realms that enrich and enliven Niagara's communities by:

- Creating a sense of place by integrating architectural features, public art, street furniture, enhanced paving, and generous planting design through the inclusion of enhanced elements in their projects, beyond the standard products and treatments;
- Leveraging regional and municipal capital funding to achieve design excellence and provide a funding option that promotes community pride and contributes to community identity projects;
- Responding to the unique challenges within our local municipalities with innovative and unique design solutions that will address the diverse needs and character of the Region's built environments;
- Supporting treatments and measures along Regional roads that include design for optimal tree health, sustainable storm water management strategies, and resilient and beautiful landscapes; and,
- Prioritizing universal accessibility with a focus on pedestrian comfort and safety by clearly defining sidewalks, crosswalks, bicycle lanes and roadways to effectively support walking, cycling, and alternative means of transportation.

“Cultures and
climates differ all
over the world, but
people are the same.
They'll gather in
public if you give
them a good place
to do it.”

- JAN GEHL



2020 Niagara Biennial
Award of Excellence winner
“Is This Modern Society?”

Artist: Jupiterfab
239 St Paul Street & Garden Park
St Catharines

PUBLIC REALM INVESTMENT PROGRAM

PROGRAM FUNDING

The Public Realm Investment Program provides *matching* funding to *eligible* local municipal projects that are initiated and constructed by either the local municipality or Niagara Region in consultation or collaboration with the local municipality. Minimum funding requests of at least **\$25,000** will be considered. The maximum Regional funding contribution is limited to an amount of up to **\$150,000**.

Partnerships with local associations and community groups are encouraged, however the Region will only match the contribution made by the municipality.

Through the PRIP, municipalities may apply for funding that may be applied to a wide variety of streetscape enhancements and upgrades to project standards or typical installations, including (but not limited to):

- **HARDSCAPING:** Sidewalks, decorative boulevard treatments, street furniture (benches, bike racks, litter receptacles), decorative lighting, etc.
- **LANDSCAPING:** Native trees, planting beds, pollinator gardens, rain gardens or bioswales, roundabouts, etc.
- **COMMUNITY IDENTITY:** Gateway features, public art (sculpture, publicly accessible murals, etc), seasonal decoration, as well as basket arms and wayfinding.

“Great cities know streets are places to linger & enjoy, not just move through.”

- BRENT TODERIAN



Smithville Parkette
St Catharines St, Smithville, ON
2019 PRIP

PUBLIC REALM INVESTMENT PROGRAM

ELIGIBILITY

This program is available to all of Niagara's local municipalities and the Niagara Peninsula Conservation Authority (NPCA).

- Projects must be within or directly adjacent to a Regional Road right-of-way; OR be proposed along local streets that are directly adjacent to significant recent, ongoing, or committed Regional capital investment.
- Projects must be completed by the end of the year following the award. For example, projects receiving funding in 2021 must be completed prior to the end of 2022.
- Projects must have committed budgets in place.
- Maintenance agreements are required.

Applications for funding will be reviewed by Regional staff using the eligibility criteria listed as (Part C) of this package.

Municipalities are encouraged to submit projects that deliver the greatest value for their communities (i.e. social, economic, and environmental). The Region specifically encourages the submission of projects located: within downtowns, employment areas or community gateways; close to public buildings or public parks; along the Regional bicycle network, transit routes, tourist areas, the wine route, and multi-use paths.

Municipalities must provide at a minimum, matching funding amount equal to the requested Regional contribution. Municipalities are invited to apply by completing the Application Submission Form provided as (Appendix 1) of this package.

Bioswale and raingardens at
Niagara Region Headquarters
Thorold, ON



PUBLIC REALM INVESTMENT PROGRAM

APPLICATION PROCESS

Applications to the Program will be processed in the following manner:

CALL FOR SUBMISSIONS - February 1, 2021

Step 1 Submission (**DEADLINE: APRIL 2, 2021**)

Applications are received by the Region and checked for completeness (additional information may be requested)

Step 2 Submission Evaluation Region Staff (**Week of April 12, 2021**)

Complete Applications are evaluated by the Region's Program Selection Team and prioritized.

Step 3 Meetings with Local Municipalities (**Week of April 19, 2021**)

Meetings with municipalities to formalize scope, scheduling, and funding.

Step 4 Award (**by May 3, 2021***)

Funding awarded to prioritized projects

*date is subject to complexity and quantity of applications

Step 5 Implementation (**2021/2022**)

Region or local municipality constructs approved works.

Step 6 Completion (**Prior to end of 2022**)

Project Completion Report submitted with invoice.



PART B APPLICATION OVERVIEW

SUBMISSION DEADLINE:

APRIL

2

PUBLIC REALM INVESTMENT PROGRAM

SUBMISSION REQUIREMENTS

Project submissions must demonstrate the public benefits of the investment for the local municipality and to the Region. Submissions must include a completed application form (Appendix 1), and include the following supporting information:

1. Explanation of how the project supports Niagara Region's plans/policies/practices as well as local planning documents/master plans.
2. Digital photographs showing the current condition of the project site;
3. Technical drawings of the project such as plans, and details;
4. Detailed itemized costs of the work;
5. Schedule of Key project milestones; and,
6. Maintenance commitment (included on application form).

Municipalities wishing to submit more than one project must make separate submissions. Project submissions will be reviewed to ensure compliance with program requirements and alignment with Regional objectives.

Submit applications to:

Program Coordinator: Vanessa Aykroyd, OALA, CSLA

Email: vanessa.aykroyd@niagararegion.ca

Mail: Public Realm Investment Program
c/o Vanessa Aykroyd, Landscape Architect
Urban Design and Landscape Architecture Section
Planning and Development Services Department
Niagara Regional Headquarters, Campbell West
1815 Sir Isaac Brock Way, PO Box 1042
Thorold, Ontario L2V 4T2

WITHDRAWAL OF APPLICATION

If a municipality must withdraw from an approved PRIP funding commitment, a letter to that effect must be submitted to Region's PRIP Coordinator as soon as possible via email or regular mail.

Depending on the amount of the forfeited funding commitment, and if a withdrawal occurs before October 1st of the same PRIP year, the funding may be reassigned to another municipality already awarded or through a new call for PRIP applications. At such time, other municipalities will be informed of the available funding and will be encouraged to submit a PRIP application. Applications will be evaluated and available funding assigned through a process that is similar to that of the initial (PART C) process.

PUBLIC REALM INVESTMENT PROGRAM

EVALUATING THE APPLICATION

All applications will be reviewed and evaluated by the Region to ensure the proposed works align with the objectives of the program.

The evaluation process is divided into 3 steps:

Step 1 Review of the application and supporting documentation for completeness

Step 2 Evaluate the application against the Evaluation Criteria (Pg. 9)

Step 3 Determine Regional funding contribution

APPLICATION and SUPPORTING DOCUMENT CHECKLIST

*ensure this information is included either on the application or is attached

1.0 Application

Completed PRIP Application (Appendix 1)	Y/N
Required plans, drawings and images provided for review	Y/N
Current Condition Photos (.jpg or .tif)	Y/N
Other required supporting studies/documentation	Y/N
Functional, operational, safety requirements have been addressed by the local municipality (provide supporting documentation from a P.Eng or other qualified professional where required)	Y/N

2.0 Aligns and Supports Niagara Region's Policies and Practices

Regional Official Plan	Y/N
Model Urban Design Guidelines	Y/N
Complete Streets Model Policies	Y/N
Relates to an Environmental Assessment (if yes then specify)	Y/N
Relates to the 10 Year Regional Capital Forecast (if yes, then which project and year)	Y/N

3.0 Support of Local Area Councils

Local Council Resolution to submit application (If applicable)	Y/N
Demonstrated compliance with local planning documents or master plans (if applicable)	Y/N

When all items have been addressed, proceed to Step 2

PART C EVALUATION PROCESS

STEP 1: APPLICATION AND SUPPORTING DOCUMENTATION CHECKLIST

The complete application requirements listed below are for information purposes and should be consulted when preparing an application. Niagara Region will use this chart to determine the eligibility and completeness of the application.

PUBLIC REALM INVESTMENT PROGRAM

STEP 2: EVALUATION CRITERIA

The Evaluation Criteria below is used by the Region to evaluate the merits of the project and prioritize projects requiring a funding contribution by the Region. Projects must score above 80 points to receive funding priority. Criteria are worth multiple points and should be addressed to ensure the benefit of projects is well-presented.

* Points of interest include, but are not limited to tourist destinations, employment areas, transit hubs and stops, public buildings, schools, colleges, universities, parks, other publicly accessible spaces and locations that are culturally and/or naturally significant.

APPLICATION EVALUATION CRITERIA

PREREQUISITE

Projects must be within or directly adjacent to a Regional Road right-of-way; OR be proposed along local roads that are directly adjacent to significant recent, ongoing, or committed future Regional capital investment.	Y/N
--	-----

1.0 Timing

Construction to commence within current program year (projects may extend into the next program year for completion)	5
--	---

2.0 Location

Within 500m of an urban core area	4
Within 500m of 5 <i>points of interest</i> *	4
Within a Community Improvement Area / Business Improvement Area / Secondary or District Plan Area	4
Along or adjacent to a public transit route	3
Along a bicycle route, multi-use path, or the wine route	3
Within 1km walking distance to a tourism point of interest	3
Within visual proximity to a landmark (gateway, heritage site, public building)	3

3.0 Community Benefit

Promotes higher use of the Regional Road and connectivity with other networks	5
Incorporates Heritage and Artistic Elements (e.g. Public Art)	5
Promotes Transit and/or Active Transportation	5
Promotes an inclusive streetscape (i.e. all ages and abilities)	3
Attracts people and promotes opportunities for social interaction	3

4.0 Design Goals

Addresses a prevalent negative condition or issue	5
Recognizes and leverages local character	4
Contributes to planned improvements/developments in the vicinity	4
Durability and attractiveness of the materials/elements	3

5.0 Environmental Resiliency

Grows the Urban Forest (Tree planting at least at a 3:1 planted:removed ratio)	5
Includes 60% or greater native plant species (no invasive species permitted)	5
Includes Low Impact Development stormwater management infrastructure	5
Includes other innovative materials, products, or practices	4
Includes recycled or sustainable products (e.g. Recycled plastic or FSC Certified products)	3

6.0 Community Partnerships

Partnership with a Local BIA or local community group or organization	5
Partnership with post-secondary institutions for skills training or innovation development	4
Uses finished products manufactured or created in Niagara	3

Greater than 80 Receives Funding Priority	Total 100
--	------------------

PUBLIC REALM INVESTMENT PROGRAM

REGIONAL CONTRIBUTION FUNDING LIMITS

1.0 Hardscape Materials and Treatments

Strategic sidewalk connections or sidewalk widening (to a minimum 2.0m)	\$30,000
Decorative concrete paving, banding, and unit paving	
Decorative crosswalks (also refer to Section 3.0)	
Decorative on-road pavement (non-asphalt)	
Off-road trail connection areas connecting to Regional Road or Bikeway	
Off-road multi-use trails and associated treatments	

2.0 Complete Streets Infrastructure

Cycling facilities (funding possible in collaboration with Bicycle Facilities Grants for Regional Bikeways)	\$25,000
Traffic Calming Measures (including curb extensions, bump outs, and medians not associated with pedestrian crossings)*	
Line painting associated with traffic calming and pedestrian crossing facilities	
Burial of overhead utilities (<i>The Regional contribution by this program will be determined on a case-by-case basis with cost estimates prepared by the public utilities.</i>)	

3.0 Road Crossing Facilities

Sidewalk extensions or bump-outs at intersections	\$15,000
Decorative concrete crosswalks	\$20,000
Decorative painted pedestrian crosswalks	\$8,000
Parklets (Reusable sidewalk extensions where on-street parking is located)	\$10,000

4.0 Site Furniture

Benches	\$12,000
Bicycle parking (rings, racks, shelters)	\$10,000
Decorative Bollards	\$5,000
Low seat walls and planters	\$12,000
Pedestrian shade structures	\$10,000
Litter and Recycling Receptacles (funding limit increased for streams that include organics, accompanied by a plan for collection)	\$5,000 - \$10,000
Drinking fountains/Bottle fillers/Pet watering stations	\$5,000
Transit Shelters	\$10,000

5.0 Landscaping

Tree Planting (including irrigation bags)	\$25,000
Innovative planting technologies (e.g structural soil cells)	\$30,000
Hanging baskets and/or planters (installed cost)	\$15,000
Planting beds	\$10,000
Rain gardens/bio-swales*	\$20,000 - \$30,000
Plants - Native, drought and salt tolerant species only	\$5,000

...continued on Page 12

STEP 3: REGIONAL FUNDING CONTRIBUTION LIMITS

Please contact the PRIP Coordinator if there are any questions about project or component eligibility.

*Traffic calming measures on Regional Roads or installations that affect Regional Infrastructure require coordination and approval by the Regional Commissioner of Public Works.

* LID bioswales and rain gardens must capture and infiltrate the design storm to qualify for specific funding.

PUBLIC REALM INVESTMENT PROGRAM

STEP 3: REGIONAL FUNDING CONTRIBUTION LIMITS ...continued

REGIONAL CONTRIBUTION FUNDING LIMITS Continued

6.0 Community Identity Features

Banner arms and banners	\$5,000
Basket arms	\$5,000
Gateway features	\$50,000
Seasonal decorations	\$8,000
Decorative street name blades	\$6,000
Information kiosks	\$15,000
Public art	\$25,000
Interpretive panels/signs	\$7,000
School related Active Transportation initiatives	\$4,000
Wayfinding initiatives	\$10,000
Anti-graffiti wraps and coatings	\$5,000



PUBLIC REALM INVESTMENT PROGRAM

REGIONAL COORDINATION/APPROVALS

After the project has received an initial funding approval, Municipal and Regional staff will work together to determine construction and installation details as they pertain to Regional infrastructure.

To ensure clarity and consistency for the project and involved staff, the point of contact at the Region for the project will be the PRIP Program Coordinator. The PRIP Program Coordinator will provide collective comments, communication, and any necessary approvals from the required Regional staff.

DESIGN COLLABORATION

Regional staff are pleased to work together with our municipal partners and provide assistance and guidance at various stages of the project, especially where the local municipality may not have staff resources that could influence the success of the project. The expertise of the Region's urban designers and landscape architects are available as needed.

PROJECT CONSTRUCTION

Once construction and installation details affecting Regional infrastructure are confirmed, a final sign-off from key stakeholders at the Region (or otherwise) will be coordinated by the PRIP Program Coordinator. As construction begins, brief project updates should be shared with the PRIP Program Coordinator at project milestones, or upon request.

PROJECT COMPLETION

Once the construction and/or installation of the works defined in the submission has been completed, payment can be requested. Municipalities must inform the PRIP Program Coordinator and provide the following:

- Project Completion Report (See Appendix 2)
- Digital photographs of the built condition; and
- Other supporting documents as required

The Project Completion Report requires the municipality to summarize the project, provide important details, and review project successes. The PRIP Program Coordinator will review the Project Completion documents, and advise that an invoice from the municipality can be issued to the Region. A PO# will be provided and the invoice will be paid Net 30.

PART D PROJECT IMPLEMENTATION

PUBLIC REALM INVESTMENT PROGRAM

PART E GLOSSARY OF STREETSCAPE ELEMENTS

HARDSCAPES

Standard Surface Treatments

Surfacing can include brushed concrete sidewalks, or asphalt pathway paving.



Upgraded Surface Treatments

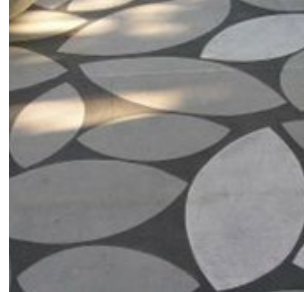
Upgraded surfacing can include materials such as stone, concrete unit pavers, coloured concrete, impressed concrete, and exposed aggregate concrete, etc.



PUBLIC REALM INVESTMENT PROGRAM

Decorative Surface Treatments

Decorative surfacing can include concrete etching, grinding, sandblasting, acid staining, metallic tinting, decorative stamping, decorative unit paving.



HARDSCAPES

PUBLIC REALM INVESTMENT PROGRAM

Cycling Facilities

Cycling facilities and surface treatments may be funded in collaboration with the Bicycle Facilities Grants for Regional Bikeways.



COMPLETE STREETS



Traffic Calming Measures

Curb extensions, bump outs, and medians provide visual cues to slow traffic.



PUBLIC REALM INVESTMENT PROGRAM

Sidewalk Extensions and Bump Outs

Used to reduce the pedestrian crossing distances of roads, bump-outs can provide additional room for street enhancements, such as, seating or public art.



Decorative Crosswalks

Limited to high tonal contrast and pavers, decorative crosswalks can be used to visually indicate a crossing to motorists and pedestrians alike.



**COMPLETE
STREETS**

PUBLIC REALM INVESTMENT PROGRAM

COMPLETE STREETS

Pedestrian Crossing Islands

Pedestrian crossing islands provide refuge from traffic in wide crossing situations.



Parklets/Pop-Up Patios

These are temporary commercial patios or landscape/park installations located in on-street parking spaces, and range from practical to whimsical.



PUBLIC REALM INVESTMENT PROGRAM

Trees and Installation Infrastructure

Grow the urban forest in a sustainable way by providing opportunities for proper soil volumes, drainage, and irrigation as necessary, using traditional or innovative measures, such as structural soil cells.



LANDSCAPES

PUBLIC REALM INVESTMENT PROGRAM

LANDSCAPES

Hanging Baskets and Planters

Add seasonal colour to the streetscape using hanging baskets and planters.



Planting Beds

Both flush and raised planting beds can add colour and curb appeal to the street.



PUBLIC REALM INVESTMENT PROGRAM

Bioswales and Rain Gardens

Bioswales and rain gardens serve dual purposes - they enhance the aesthetic of the streetscape, while treating quantity and quality of stormwater. This increases the resiliency of the streetscape and relieves pressure on grey infrastructure.



LANDSCAPES

PUBLIC REALM INVESTMENT PROGRAM

SITE FURNITURE

Seating Options

The style and design of seating should positively contribute to the aesthetic value of the streetscape, and respond appropriately to the installation location and expected user of the seating.



Seating and Retaining Walls

Retaining walls provide valuable functions, but can also serve dual purpose along pedestrian walkways.



PUBLIC REALM INVESTMENT PROGRAM

Litter and Recycling Receptacles

Refuse containers for handling single and multiple streams can include automated systems such as Big Belly Solar Compactors or similar. Three stream (waste, plastic, organics) receptacles are encouraged where possible.



Bicycle Parking

Encouraging active transportation via bicycle requires space to park. Bike racks can be open or covered, and range from purely functional to public art.



SITE FURNITURE

PUBLIC REALM INVESTMENT PROGRAM

SITE FURNITURE

Bollards

Bollards provide protection for pedestrians and can be purely functional, or serve a dual purpose as public art.



Bus Shelters and Shade Structures

Protecting pedestrians and transit riders from the sun and elements.



PUBLIC REALM INVESTMENT PROGRAM

Decorative Fencing

When fencing is required, an upgrade to the standard can create a statement.



SITE FURNITURE

Drinking Fountains/Bottle Fillers

Classic or whimsical, making clean water readily to pedestrians and their pets available helps to reduce plastic waste from landfills and oceans.



PUBLIC REALM INVESTMENT PROGRAM

COMMUNITY IDENTITY

Banners and Banner Arms

Banners (and banner arms) with a demonstrated community benefit are an safe and easy way to create a 'Main Street' identity, and can be tailored year after year.



Gateway or Prominent Place Features

These features can help to create community identity, and establish a sense of arrival at a community or landmark.



Seasonal or Festive Decorations

This includes pole mounted wreaths, lights, bows, etc, as well as string lights, accent lighting, or audio and visual projection.



PUBLIC REALM INVESTMENT PROGRAM

Decorative Street Name Blade and Plates

Create community or neighbourhood identity with decorative blades and plates.



COMMUNITY IDENTITY

Information Kiosks, Wayfinding, and Interpretive Signs

Connect your community with kiosks that allow citizens to stay up to date with activities and events, or share history or information with interpretive signs



PUBLIC REALM INVESTMENT PROGRAM

COMMUNITY IDENTITY

School Active Transportation Initiatives

This includes walking audits, walking promotion, wayfinding, and the addressing of immediate barriers to walking or cycling to and from school.



Anti-Graffiti Wraps and Coatings

Encourage less 'tagging' on municipal infrastructure. Wraps may be used on infrastructure, and coatings can be used to protect surfaces or permitted artwork..



Tactical Urbanism Initiatives

Enabling change through endorsed temporary installations of elements not mentioned in other categories.



PUBLIC REALM INVESTMENT PROGRAM

Public Art

Celebrate and enliven the community and neighbourhood identity with murals, sculpture, and more.



**COMMUNITY
IDENTITY**

2021 PUBLIC REALM INVESTMENT PROGRAM APPLICATION

Municipality:		Project Location or Address:	
Project Name:			Submission Date:
Estimated Total Project Value:	Requested Regional Contribution Amount:	Estimated Construction Start Date:	Estimated Construction Completion Date:

Project Description

Describe the project, and how it contributes to the enhancement of the public realm. Address how the project supports Niagara Region's plans/policies/practices as well as local planning document/master plans. See Part C - Evaluation Criteria (p.10 in the PRIP Application Guide) to aid in demonstrating the value of this project. If additional space is required, please feel free to attach this section separately.

Application Check List

Attach additional documentation to the application form separately

<input type="checkbox"/> Itemized Cost Breakdown	<input type="checkbox"/> Project Dates and/or Milestones	<input type="checkbox"/> Detailed/Tender Ready Drawings	<input type="checkbox"/> Current Condition Photos
<input type="checkbox"/> We acknowledge that if this application is approved, the municipality will be responsible for maintenance of the works under the application. Maintenance or Encroachment Agreements may be required.			
<input type="checkbox"/> We acknowledge that if this application is approved, the Regional Funding Contribution commitment expires at the end of the year following the approval*			
<input type="checkbox"/> We commit to provide a <u>Project Completion Report</u> which is to include a final project cost, project date of completion, copies of invoices paid with funding of this program, digital photographs of completed work, or other items as required.			

Municipal Project Lead		Municipal Head of Public Works	
Name:	Date:	Name:	Date:
Signature:		Signature:	

**If the project cannot be completed prior to the end of the prescribed time frame, please contact the PRIP Program Coordinator*

2021 PRIP PROJECT COMPLETION REPORT

Municipality:		Project Location or Address:	
Project Name:			Date Submitted:
Original Project Cost:		Actual Project Cost:	
Regional Funding Contribution (Award Amount):		Municipal Funding Contribution:	
Identify other Funding Sources and Amounts:			
Project Construction Start Date:		Substantial Completion Date:	
Project Performance: <i>Describe the final project and list quantity of items included. Describe how the PRIP has impacted the project's success in the public realm.</i> Hardscape Materials and Treatments; Facilities that Promote Complete Streets; Road Crossing Facilities; Street Furniture; Landscaping; Community Identity, etc.			
Supporting Documentation: <i>Attach additional documentation to the Project Completion form separately</i>			
<input type="checkbox"/> Itemized Cost Breakdown	<input type="checkbox"/> Project Dates and/or Milestones	<input type="checkbox"/> Tender/As Built Drawings	<input type="checkbox"/> Post-Construction Photos
Qualitative Feedback from Project Stakeholders (property owners, businesses, visitors, tourists, patrons, or "in the news")			
(Empty space for qualitative feedback)			
Municipal Project Lead:		Municipal Head of Public Works:	
Name:	Date:	Name:	Date:
Signature:		Signature:	