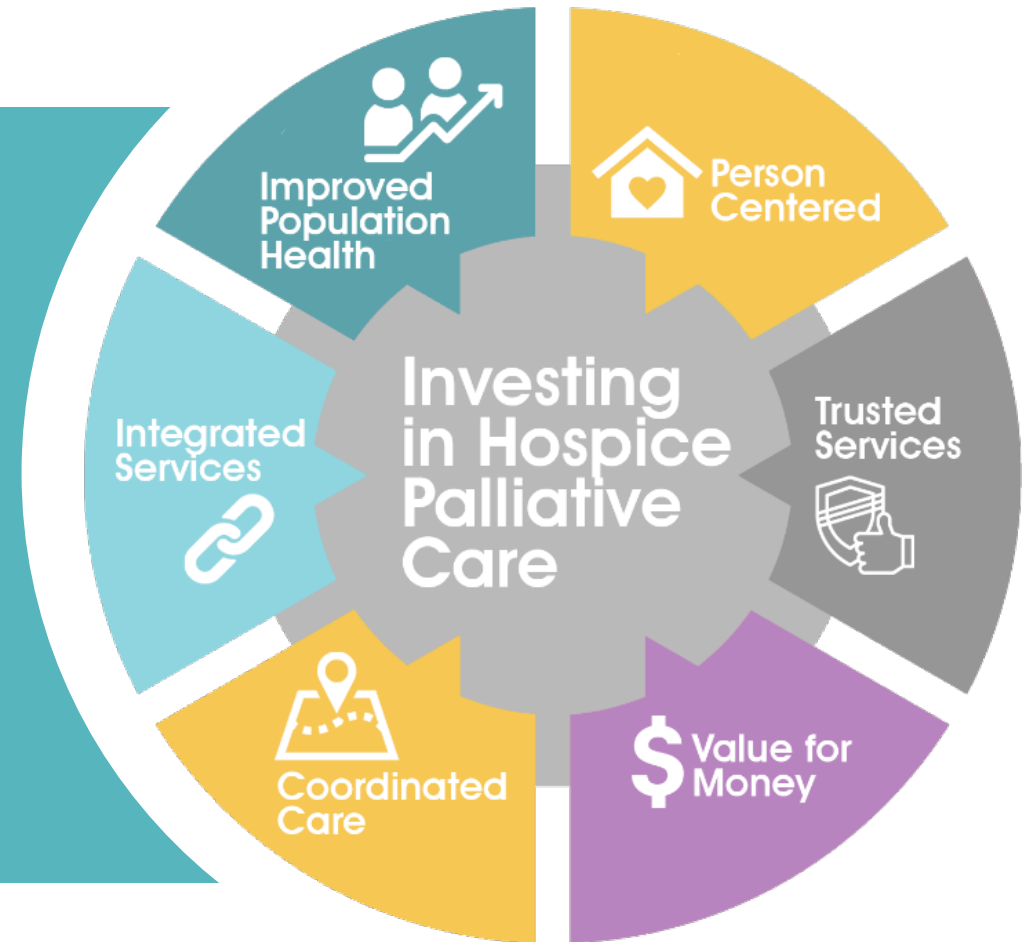


# Corporate Service Committee

Date: November 9, 2020

Presented by: Carol Nagy, Executive Director, Hospice Niagara



# The Project:

In Niagara, the pressure to fund new hospice beds builds has never been more real – and provided such an opportunity.

The redevelopment of two not-for-profit Long-term Care Homes (LTC) in Niagara presents a unique opportunity to co-locate and integrate hospice residences alongside homes making this important care a more sustainable option.

## Project will:

- Provide 20 new hospice residence beds in Niagara
- Bring 50-60 new health care jobs, many being professionals to Niagara
- \$14M of capital investment in Niagara's health care system
- Translate into \$500,000 annual local spending to each community
- Help more than 10,000 people across the region each year

# The Problem:

Providing equitable, safe access to health services for everyone in Niagara is a compelling social obligation that includes developing accessible hospice palliative care programs across the Region.

Dying is not just a medical event. It is a physical, social, spiritual, psychological life event affecting the patient and their family members.



HOSPICE PALLIATIVE CARE PLAYS AN IMPORTANT ROLE IN ENDING HALLWAY MEDICINE.

## **In Niagara, health care pressure will continue to mount:**

- Niagara has a high percentage of seniors living with chronic illness. Predicted 72% increase in chronic condition prevalence rates by 2036.
- 4<sup>th</sup> largest average of hallway bed conditions in Ontario
- 2<sup>nd</sup> highest hospital cost in 1997: Acute Palliative Care at \$118M
- Niagara's hospice bed count - 3 beds/100,000 vs. Auditor General recommended 7-10 beds/ per 100,000
- Four designated end-of-life beds in Fort Erie are closing in 2026
- Future of South Niagara hospitals and service transitions uncertain
- No increase planned for other hospital end-of-life units
- Niagara has a high percentage of seniors living with chronic illness.

*The Time to Act is Now*

# The Solution:

- Increase community hospice care capacity with the addition of 20 hospice beds to improve access to exceptional, compassionate care
  - 3 Hospice Palliative Care Centers of Excellence
    - North Niagara into Central and South Niagara
- Increase in-home and caregiver services across Region
- Investment of \$14M in capital construction – co-located and coordinated with 2 new LTCH builds
- Successful community fundraising campaign – endorsed by HN Board and launched in 2020
- Opening of 20, much needed, new hospice beds in Niagara by 2023

# Hospice Care

Planning for increased hospice beds will ensure that:

- Care is closer to more communities across the Region
- 900+ people will receive hospice care each year
- Including this much needed support for their family members during the last weeks of their loved-one's life



Up to 250 people  
die in hospice /yr  
\$1.3M saving  
on hospital acute care

**Current State**

# Hospice at Home

## Current State



Up to 1,800 people receive  
in home palliative care /yr

73% of these people die  
at home

\$7.2M savings in hospital  
acute care /yr

Planning for increased home hospice care will help  
an additional

- 2,400 people receive care at home
- while their caregiver's receive additional support  
as they provide care to their loved-one
- 500 more bereavement group opportunities will  
be available for all ages

# Hospice Palliative Care



Community-based hospice palliative care happens in people's homes and in hospice residences at a fraction of the cost of hospitals.

HOSPITAL END-OF-LIFE CARE = \$1,100 PER DAY

# Hospice Residences



Hospice residences are for people who need more care than home can provide but do not require the high cost of hospital care, and for those who choose to die at hospice.

HOSPICE CARE = \$465/DAY HOSPICE CARE

# Hospice at Home



Hospice at Home is coordinated care by a team of trained staff and volunteers who provide practical help and support the success of home care for people living and dying with chronic illnesses.

HOSPICE AT HOME = \$100/DAY

# Hospice Niagara Client and Caregiver Feedback

- 98%** Ranked the care of their loved-one as excellent
- 94%** Felt overall, all physical pain was addressed
- 100%** Felt they received respect and dignity
- 100%** Felt they were included in care planning and decisions
- 100%** Feel volunteers and staff met their needs

- ✓ By partnering with LTC, we will be able to provide more hospice care, for people in both English and French
- ✓ Integration with LTC and with other health partner(s) provides a model for future builds in smaller communities.
- ✓ Hospice expansion will maintain existing hospital end-of-life services at risk of closing and help manage increasing need for this care in Niagara
- ✓ Integration opportunities allow for sustainable growth
- ✓ The Ministry of Health has endorsed this plan moving forward by committing operational funding commitment. They have yet to endorse the \$4M provincial hospice capital grant policy.



**HOSPICE'S**  
proven record in  
**PARTNERSHIPS** and  
exceptional care will  
provide vital health care  
**COST SAVINGS**



Increasing capacity in hospice palliative care throughout our region moves Niagara toward a truly modern, connected health care system that nurtures close partnerships between Long-term Care, community, hospitals, home and hospice, and ensures that every person receives the high quality of care they expect and deserve.

# In Conclusion:

We all experience dying, death and bereavement. It touches each and every person multiple times. Supporting people to live well until last breath is a measure of our humanity and our society.



Together, we are in a unique position to develop a new economical expansion model for Hospice Palliative Care in Ontario that better addresses the needs within our community.

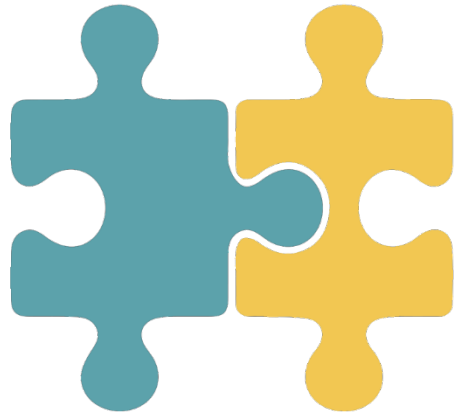
This forward-thinking solution that maintains globally recognized palliative standards of care, while leveraging strategic growth opportunities to create positive social impacts, will significantly reduce hospital costs and contribute to ending hallway medicine.

Hospice Palliative Care is the most cost effective way to ease health care costs in our congested hospitals. Helping families stay well through bereavement is compassionate and keeps our society functioning well.



The Ministry of Health has endorsed this plan moving forward by committing operational funding commitment  
They have yet to endorse the \$4M provincial hospice capital grant policy

# Request:



Regional Council consider a capital contribution to Hospice Niagara up to \$4M in the 2021 Budget process to help leverage provincial funding in support of 20 new hospice beds to better serve residents across Niagara.