

## Appendix 1 Architectural images of LTC home redevelopment

### Ontario Street Elevation Looking North West:

The five storey Linhaven LTC home will have a prominent street presence along Ontario Street. The exterior façade is comprised of stone, masonry and aluminum composite metal panels providing a durable, low maintenance building envelope. Transparency and natural light is brought into the building through a combination of curtain wall and punched windows.



## Wellness Centre – Adult Day Program Room

An open concept great room that allows for optimal flexibility in room configuration to meet varying program interests of participants. Adjacent small programming space, and a quiet room are tailored to very specific interests and needs of the participant group. Participants will move to the exercise and program kitchen areas for functional programming needs while simultaneously creating the circumstance for movement and mobility which are essential to continued independent living.



## Wellness Centre – Exercise Room

Design elements create a community space that supports regularly scheduled Healthy, Safe, and Strong exercise classes in addition to an informal walking track. IT projection capacity to alternate rooms allows others to benefit from the class. Beyond scheduled classes, the space can be transformed into community meeting space with flexible furnishings and built in TV, audio and IT connectivity.



## Wellness Centre – Program Kitchen/Dining

Primary use is to support Adult Day Program client meal service and food related baking/cooking programs. Integrating the space with the adjacent conference room allows for projection and audio of cooking programs and/or target instructional healthy cooking habits such as heart smart cooking; while refining skills through the teaching kitchen.



## Linhaven – Great Room & Café Seating

Residents, families and visitors will have access to a large multi-use area on the ground floor of the home. The area has been purposely designed to provide a variety of environments, through the use of décor, equipment and furniture, to encourage casual use by both residents and their families as well as to facilitate appropriately scaled programs and events.



## Resident Home Area – Dining Room

The dining rooms are located within the central hub of each resident home area. There are two dining rooms per resident home area, each accommodating 16 residents, and are serviced from a centrally located home kitchen. Incorporating two smaller dining rooms into the design provides residents with a home like setting to experience pleasurable dining. Dining rooms have been designed to facilitate optimal circulation around tables and mobility aids. Beyond their function during meal services, the dining rooms add to the domestic character of the home area and serve as a catalyst for social activities that relate to food and home.



## Resident Home Area – Bedroom Corridor

Resident home area corridors have been designed in an efficient manner thereby minimizing the distance residents need to travel to access amenities within the home area. Handrails on both sides of the corridor hallways provide for safe and secure travel by residents. Outside of each bedroom memory boxes have been incorporated to personalize the space and provide visual cues for residents. Personal protective equipment (PPE) cabinets have been discretely incorporated into the space providing convenient access for staff and optimizing infection control.



## Resident Bedroom

The layout and location of the private and semi-private (basic) resident bedrooms are similar for all resident home areas. The design of the resident bedroom was informed in part by the requirements of the ceiling-mounted lift track system that will be installed in each room. Resident rooms include large operable windows and individual HVAC units for personalized comfort and temperature control. Wood accents on the wardrobe and walls provide for a warm homelike feel. Lighting controls provide for day and nighttime settings, supporting resident wellbeing by minimizing the effect of electric light on the human circadian rhythm.





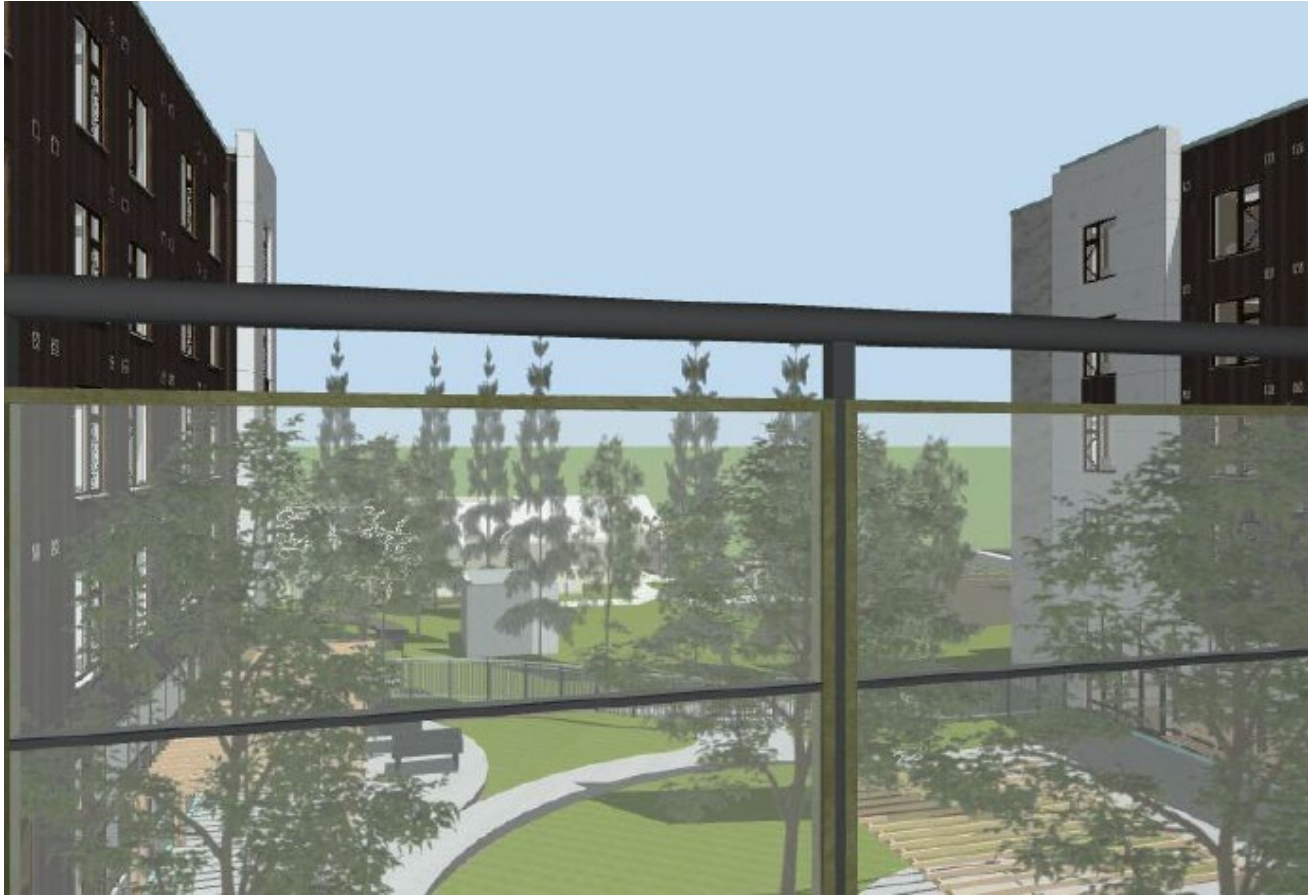
## Semi-Private Resident Washroom

Semi-private washrooms include two vanities and storage cabinets, providing residents with their own space for personal grooming items. Separate vanities also assist with infection control and avoidance of cross contamination.



View from Resident Home Area Balcony – Looking South

The building design incorporates outdoor spaces throughout the LTC home that will provide residents with a safe environment to enjoy the outdoors. In each home area, residents will have access to an outdoor terrace centrally located off the dining room.



## LTC Exterior Courtyard

The home features two large secure courtyards at ground level which will be accessible from several programming spaces available to residents including the celebration room, café, great room, diner, rehabilitation gym and auditorium. The courtyard will be designed to provide a variety of experiences for residents ranging from quiet meditative spaces to more active and stimulating areas. The courtyard will feature hard flat surfaces in looped configurations allowing residents to easily and safely navigate all areas. Shade structures and seating will be incorporated into the design to provide residents with rest areas and protection from the elements.

