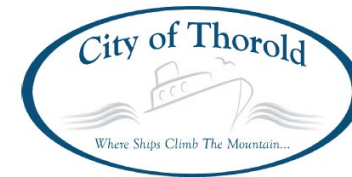


Brock District Plan Placemaking Manual

June 1, 2021

Prepared in collaboration with:



Presented by:

Kirsten McCauley, Acting Manager of Long Range Planning

Khaldoon Ahmad, Manager of Urban Design

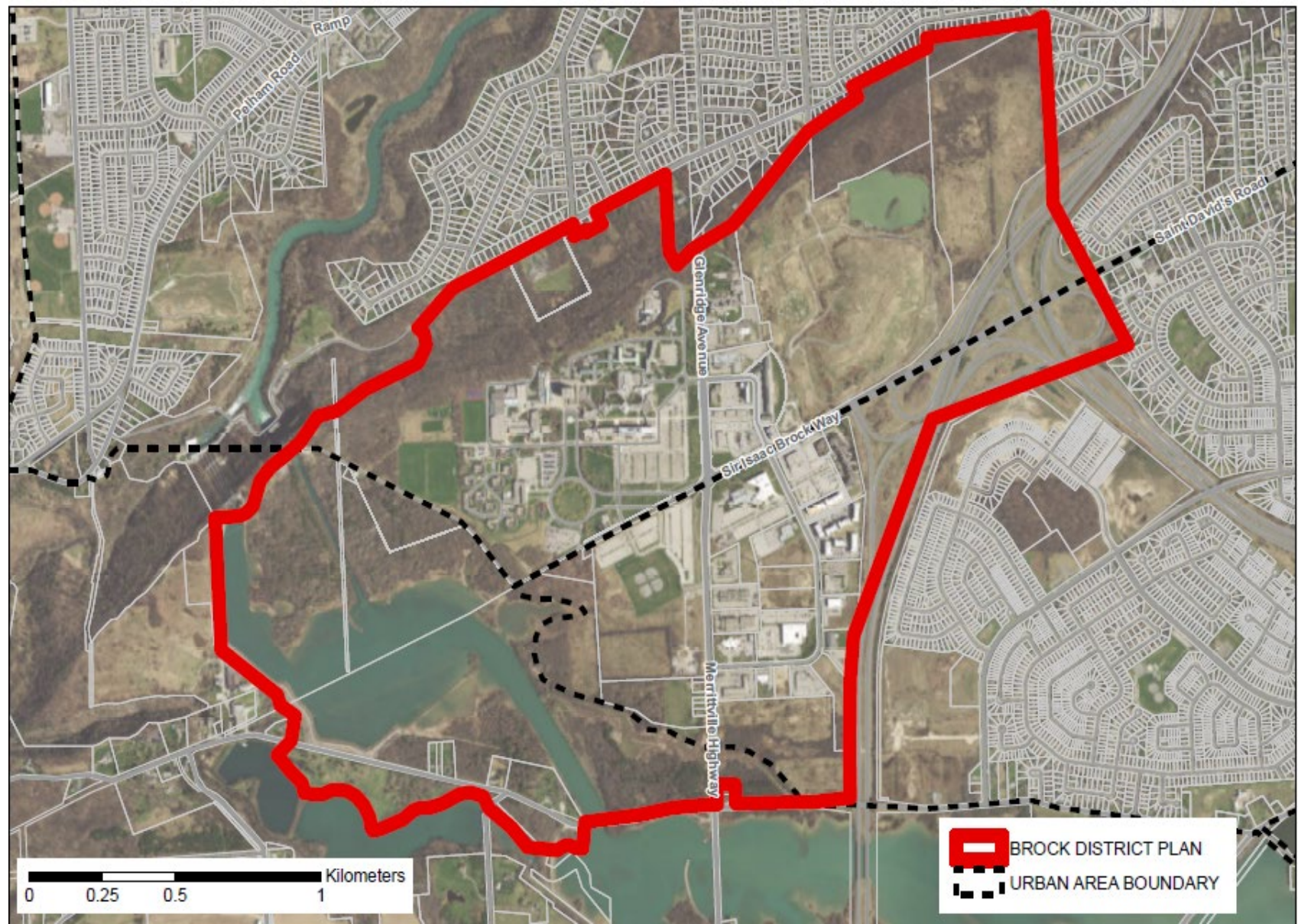
Brock District Plan



- Regional vision and framework for planning, design and development of a complete community.
- Endorsed in 2016/2017
- Guide for multiple stakeholders to coordinate development and investment efforts.

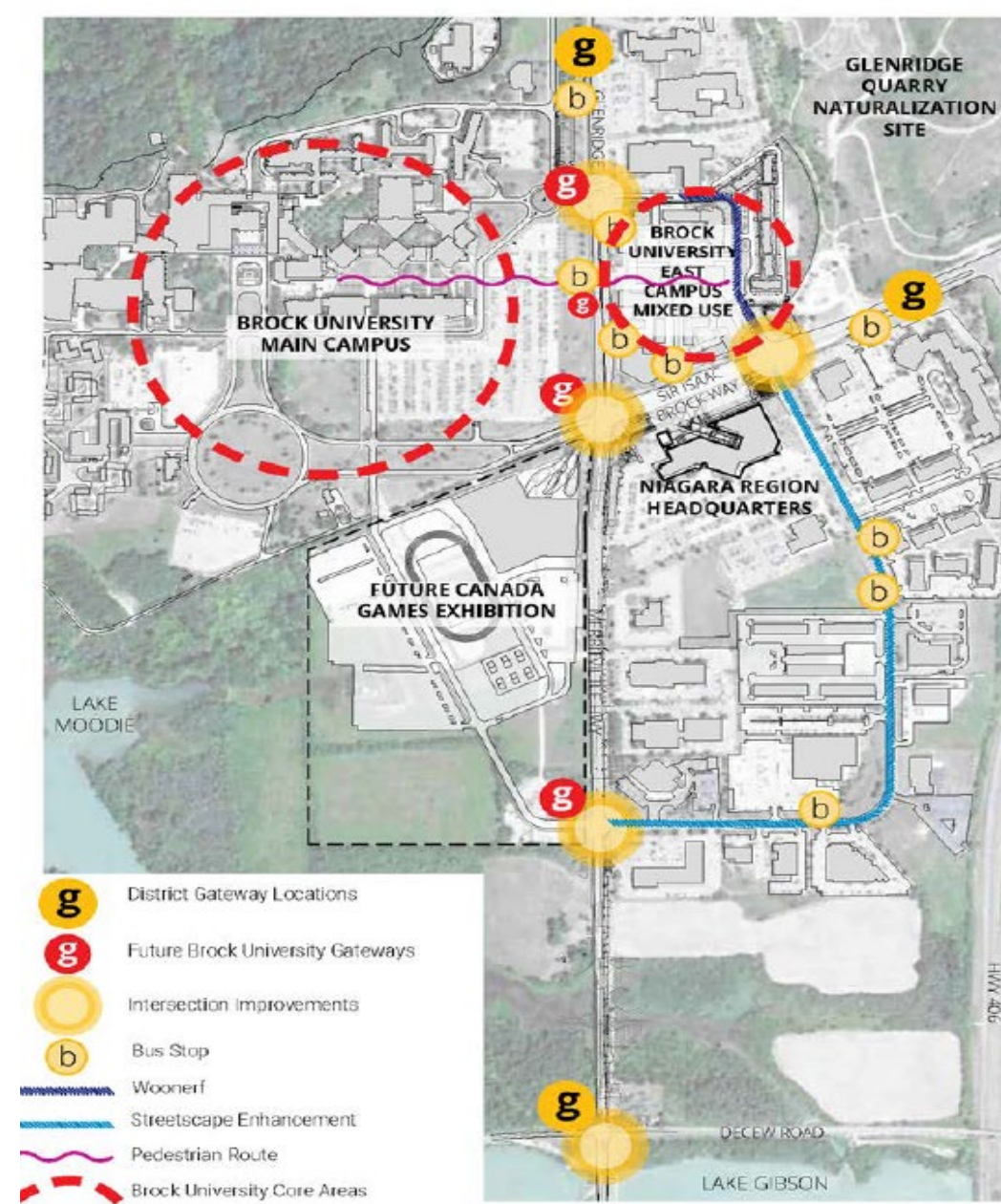
Brock District Key Frameworks:

1. Positioning the District globally within a UNESCO Biosphere Reserve
2. Setting the District in the Niagara Escarpment
3. Gateways to the District
4. Sustainable Urban District
5. Balanced Circulation
6. A Green Brock District
7. A Complete Community

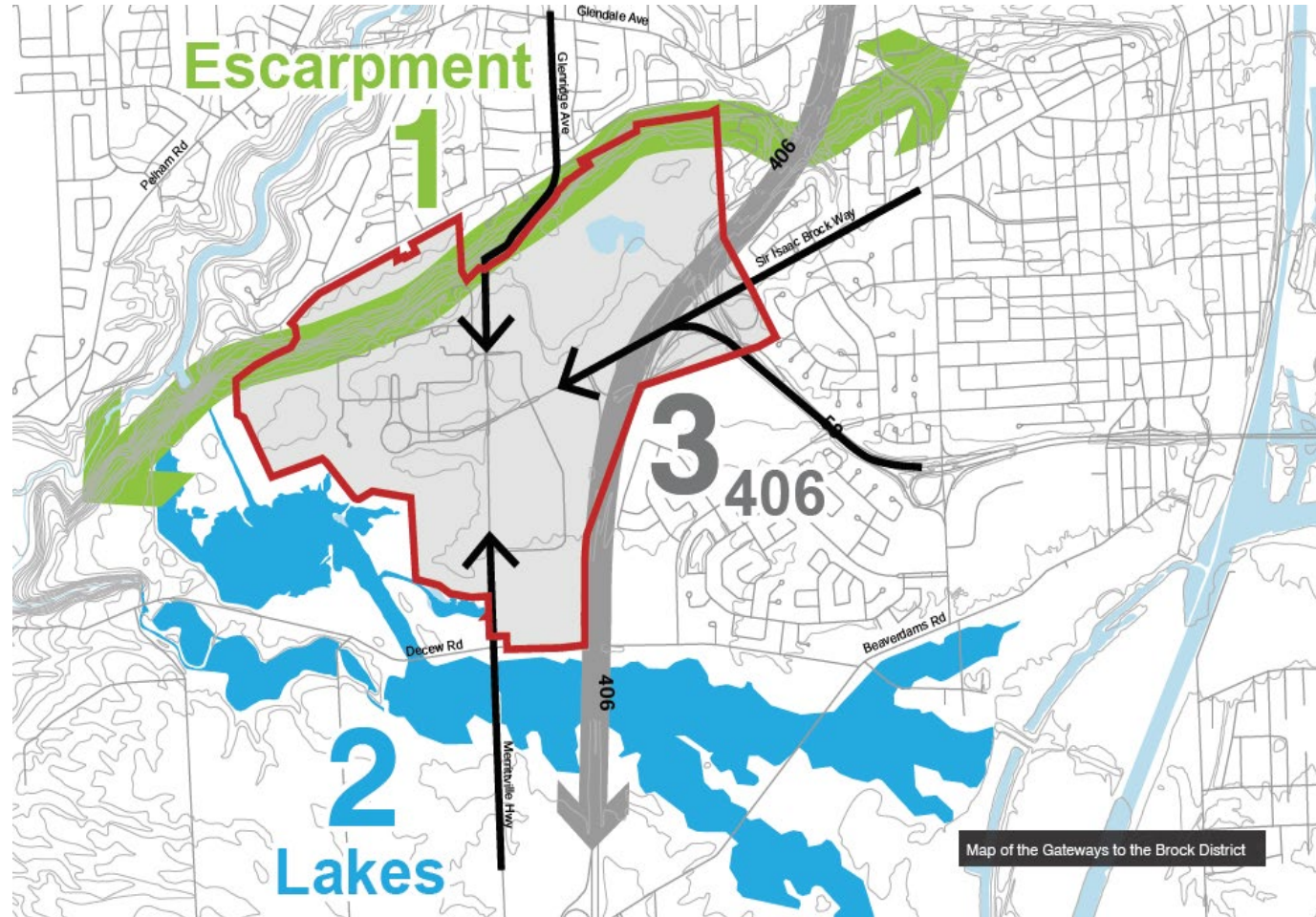


Purpose of a Placemaking Manual

- Consistent design and aesthetic direction
- Recognizable destination
- Landscape interventions that will enhance public space
- Promote environmental sustainability
- Encourages active transportation and connections
- Leadership in innovative practices



Gateways



Gateways

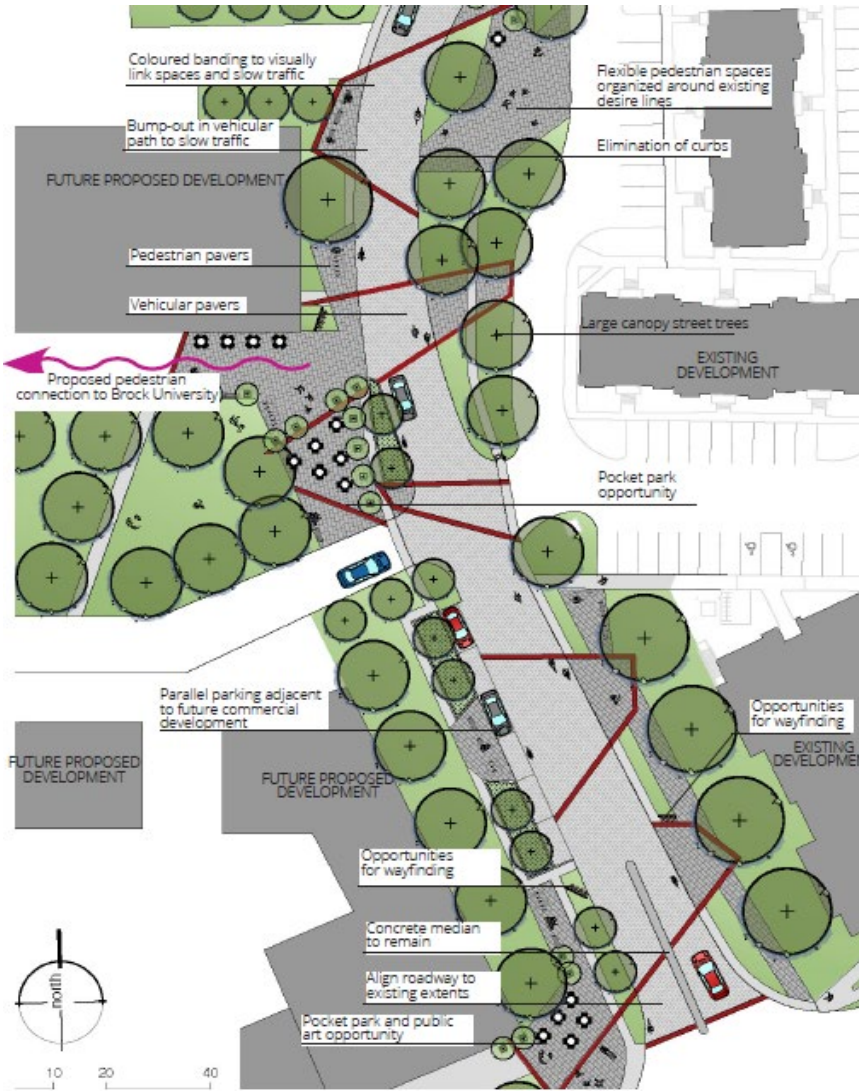
Merrittville Hwy and Decew Rd Gateway



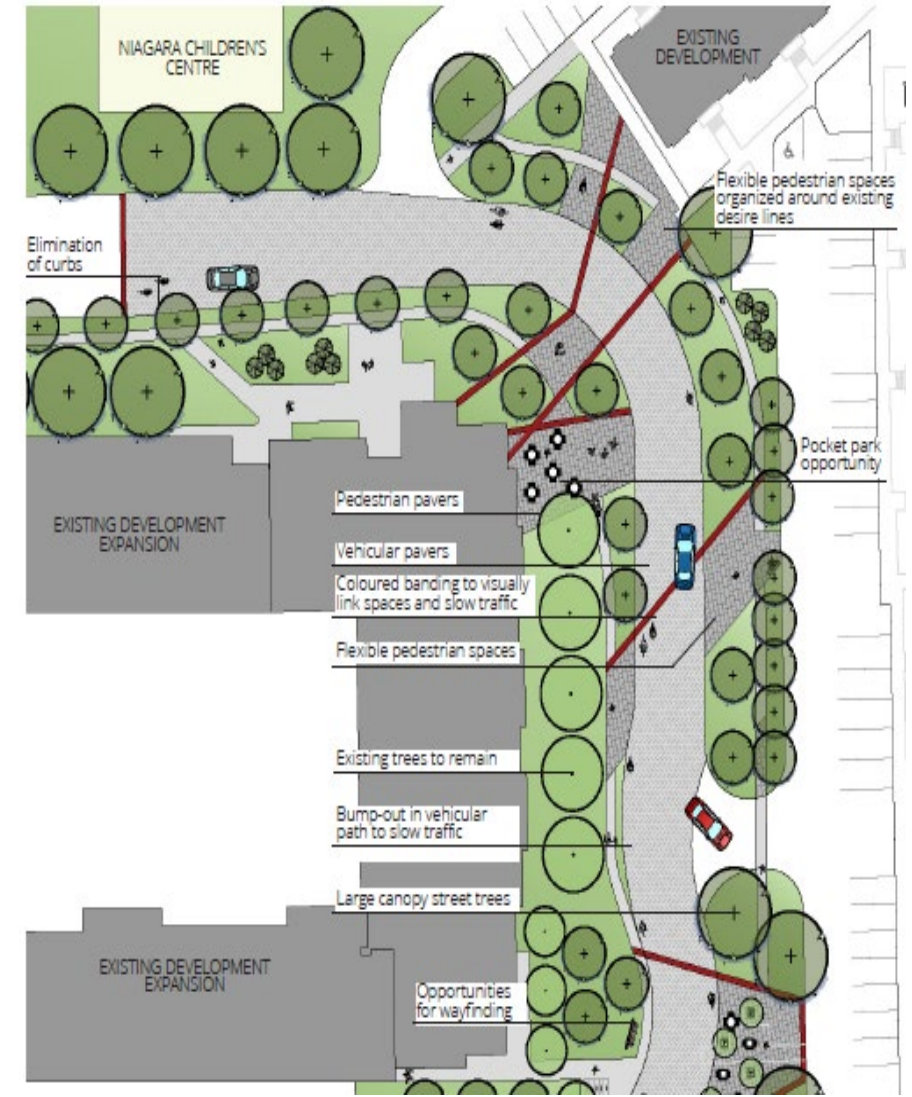
Glenridge Ave Gateway



John Macdonell St Woonerf

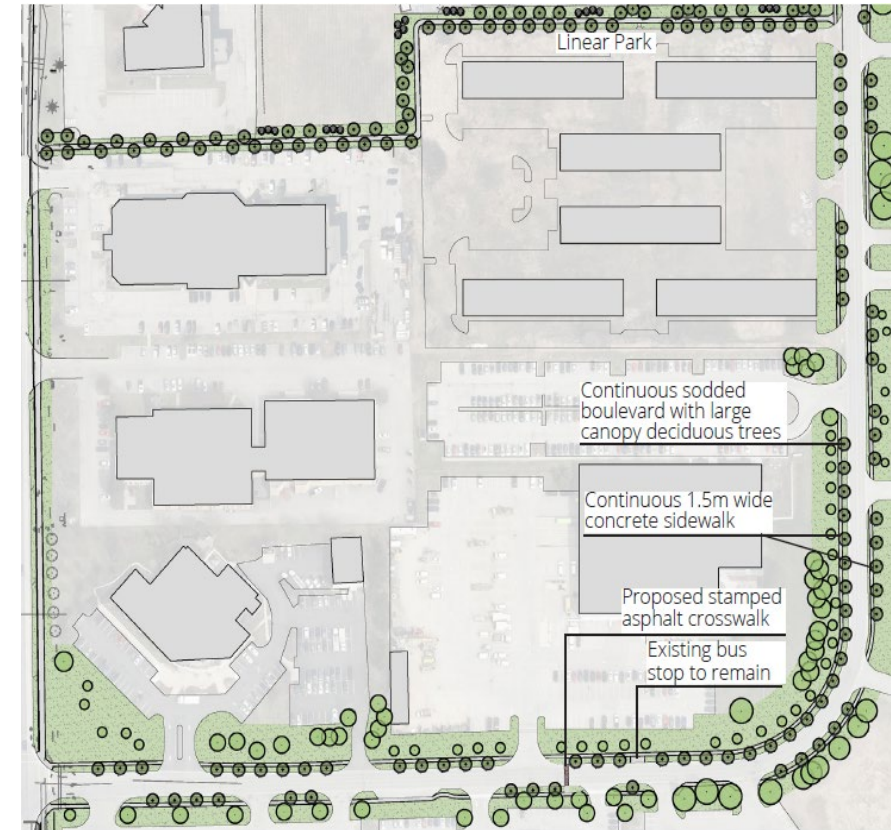
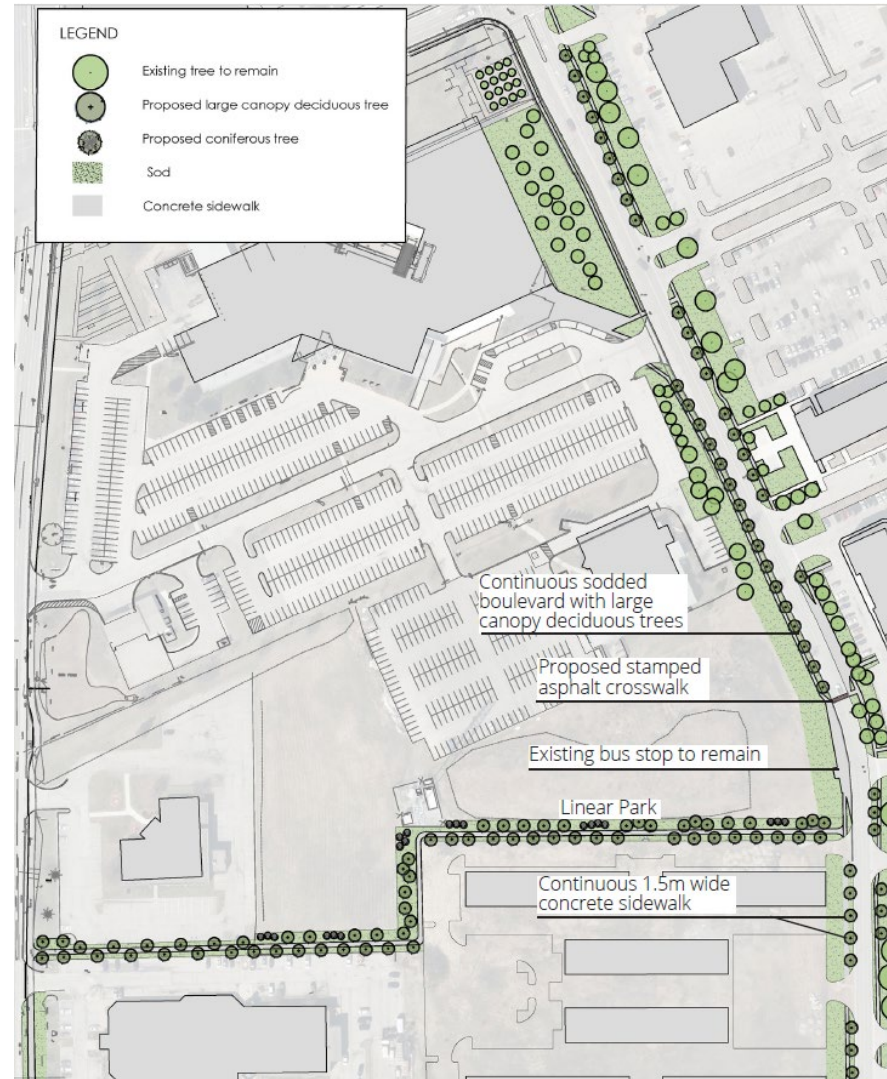


The woonerf, Dutch for “home zone,” is a pedestrian-friendly street model. Vehicular movement by automobile or bicycle is slow, as traffic-calming elements, rest areas and social space signal the pedestrian focus of the space.



Schmon Parkway Streetscape

Enhancements consist of street trees, linear park connection and 1.5m wide concrete sidewalks connecting the existing sidewalk framework.



Acer rubrum



Acer x freemanii 'Autumn Blaze'

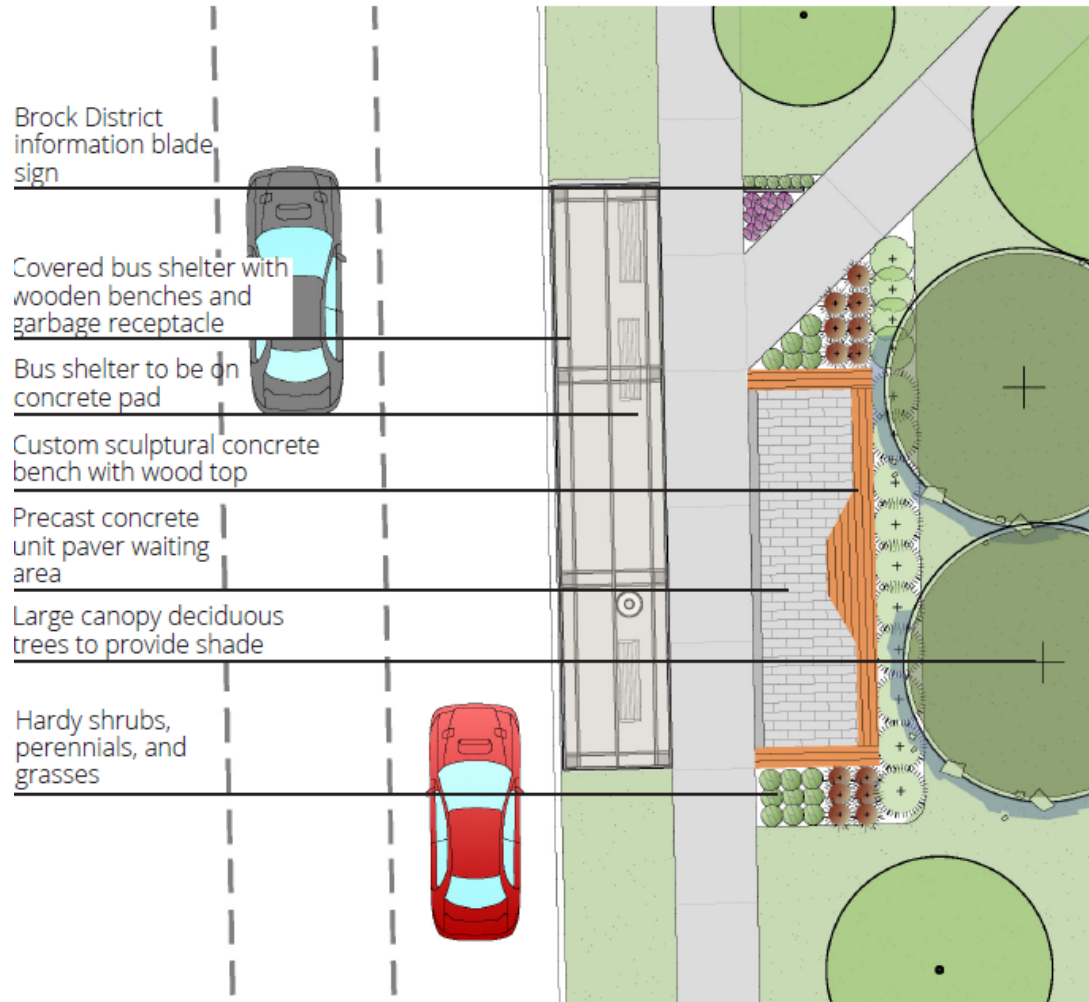


Celtis occidentalis



Ostrya virginiana

Bus Stops and Parkettes

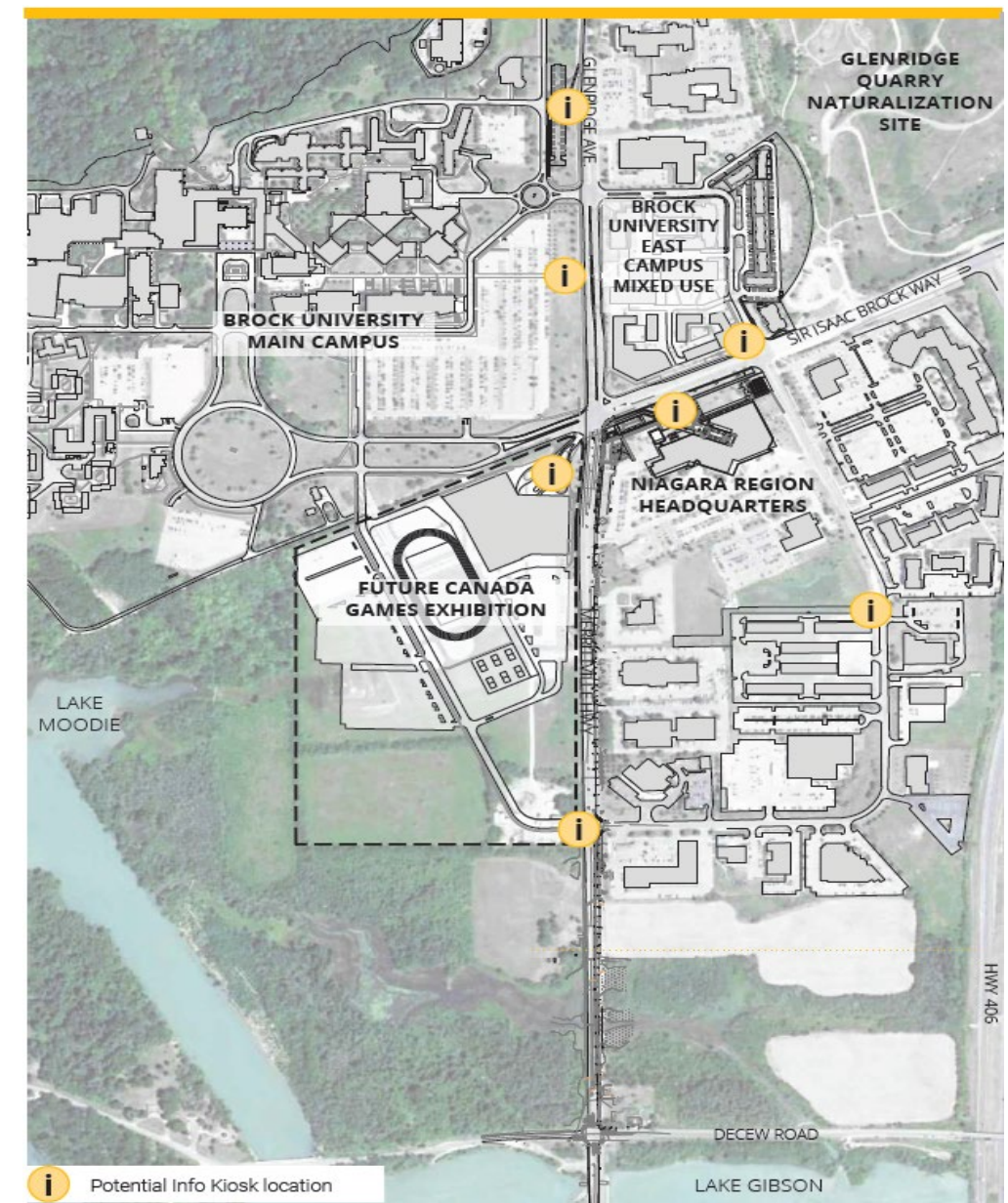


Enhanced planting, overflow seating areas, and wayfinding opportunities transform these spaces from a generic stop into a pocket park with unique character.



Wayfinding

Provides direction and sense of place for pedestrian, active transportation, and vehicular visitors to key destinations within the district.



Furniture



Furniture palettes have been selected to provide a cohesive design aesthetic across the district.

Green Infrastructure

Highlights existing LID facilities and types of LID installations that can be used for both public lands and/or publicly facing private lands, at various scales, in order to improve existing conditions.



Public Art

Public art contributes to the overall identity, history, and aesthetic of a District. Direction provided for art locations, crosswalk enhancements and wraps for utility boxes.



Next Steps

Implement the shared design vision and ensures that a consistent approach is taken by all stakeholders within the District as changes are made over time.

1. Implementation Plan

- Phasing
- Budget
- Coordination and Agreements

2. Continued collaboration

- Scoped Implementation Committee
- Technical Advisory Committee
- Canada Summer Games

Contact:

Kirsten McCauley, Acting Manager Long Range Planning

Kirsten.mccauley@niagararegion.ca

Khaldoon Ahmad, Manager of Urban Design

Khaldoon.ahmad@niagararegion.ca