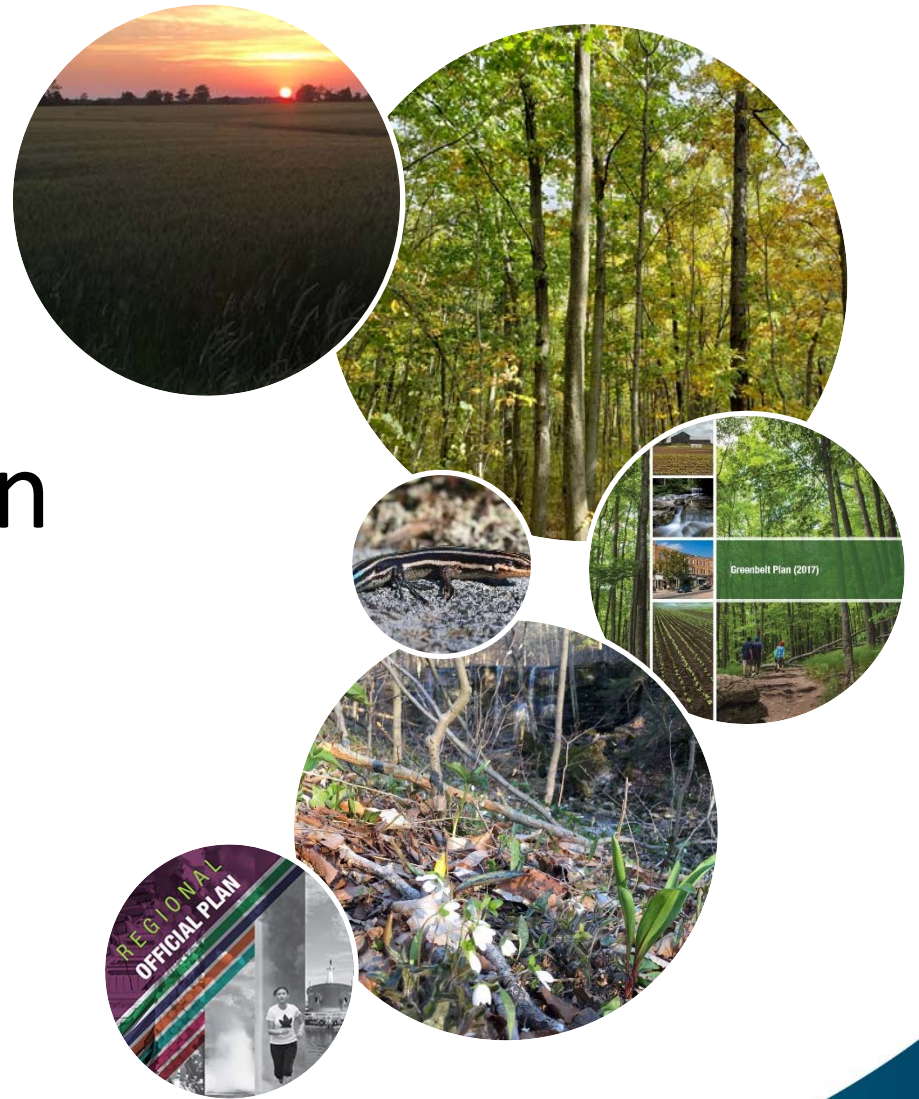


# Environmental Planning Function Overview



# Background

- Protocol for Plan Review and Technical Clearance between the Region and NPCA
  - First approved in 2008
  - Updated and approved in January 2018

# Policy Framework



# Natural Heritage System

- *“A system made up of natural heritage features and areas, and linkages intended to provide connectivity...and support natural processes which are necessary to maintain biological and geological diversity, natural functions, viable populations of indigenous species, and ecosystems....”*

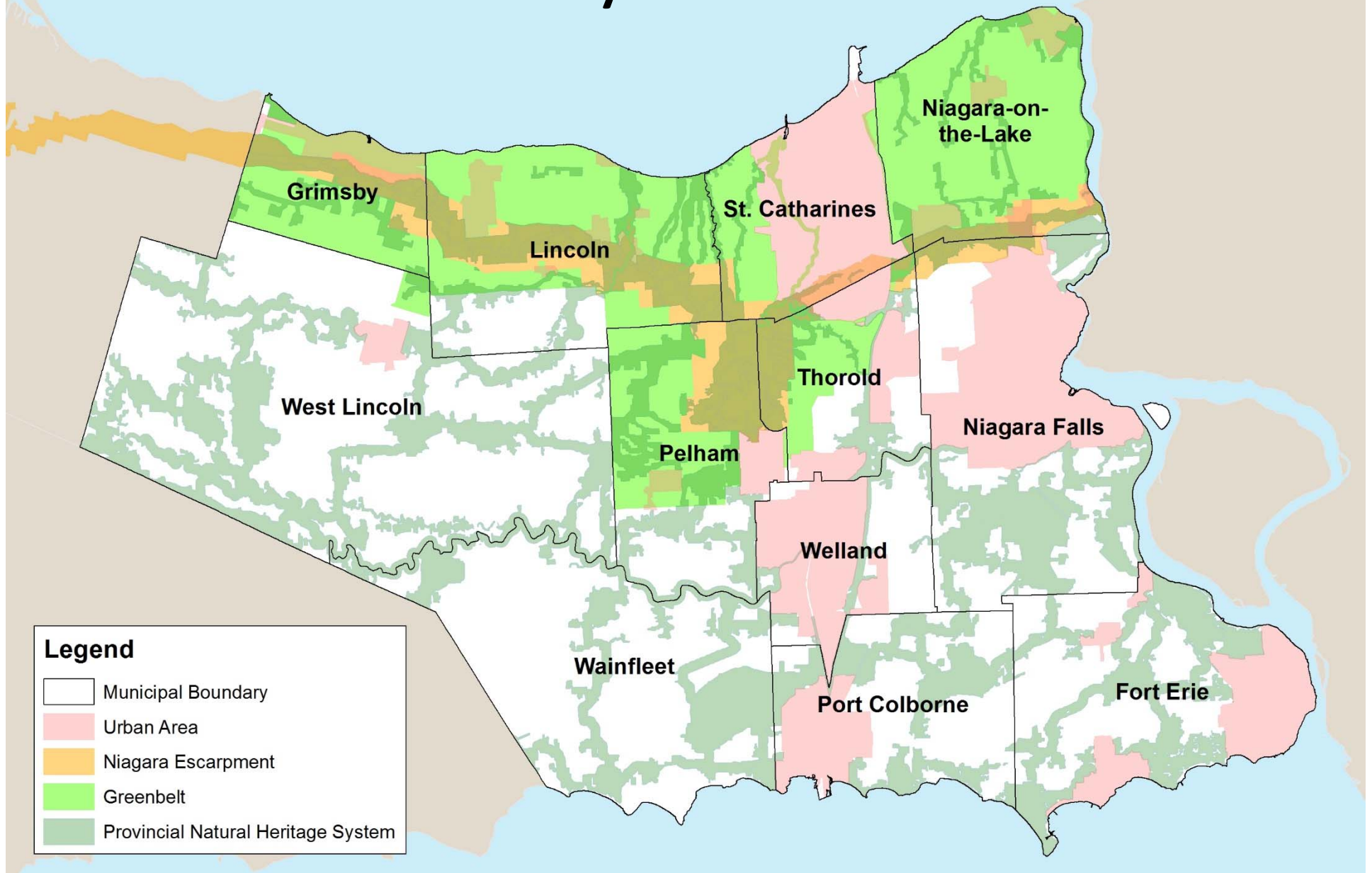
– Provincial Policy Statement

# Natural Heritage System

Feature/Area	PPS 2014	Growth Plan 2017	Greenbelt Plan 2017
Significant Wetlands	X	X	X
Significant Woodlands	X	X	X
Species at Risk Habitat	X	X	X
Significant Wildlife Habitat	X	X	X
Significant Valleylands	X	X	X
Fish Habitat	X	X	X
Linkages	X	X	X
Significant Area of Natural and Scientific Interest	X		
Life Science Area of Natural and Scientific Interest		X	X
Wetlands		X	X

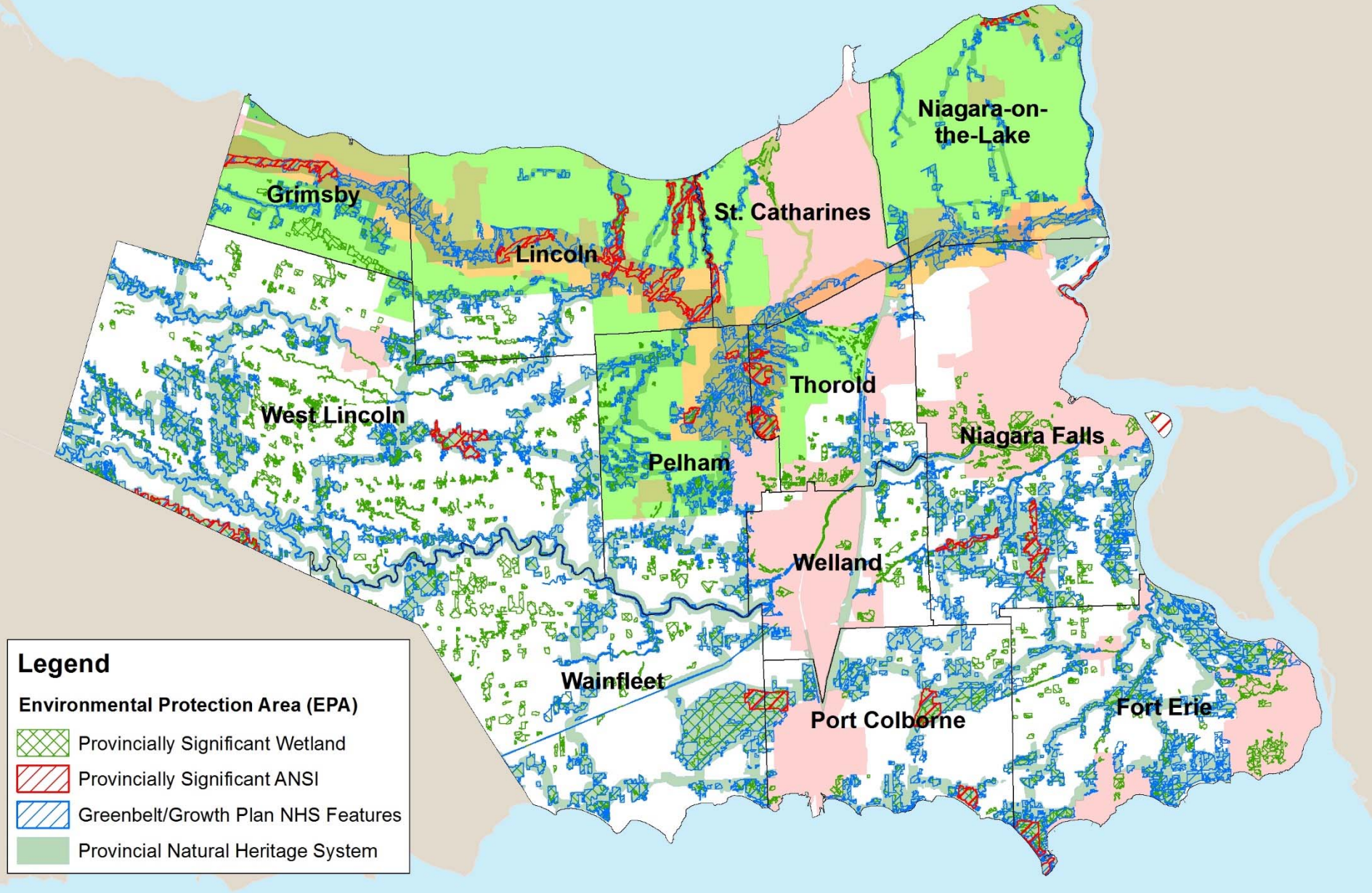


# Provincial Policy Framework





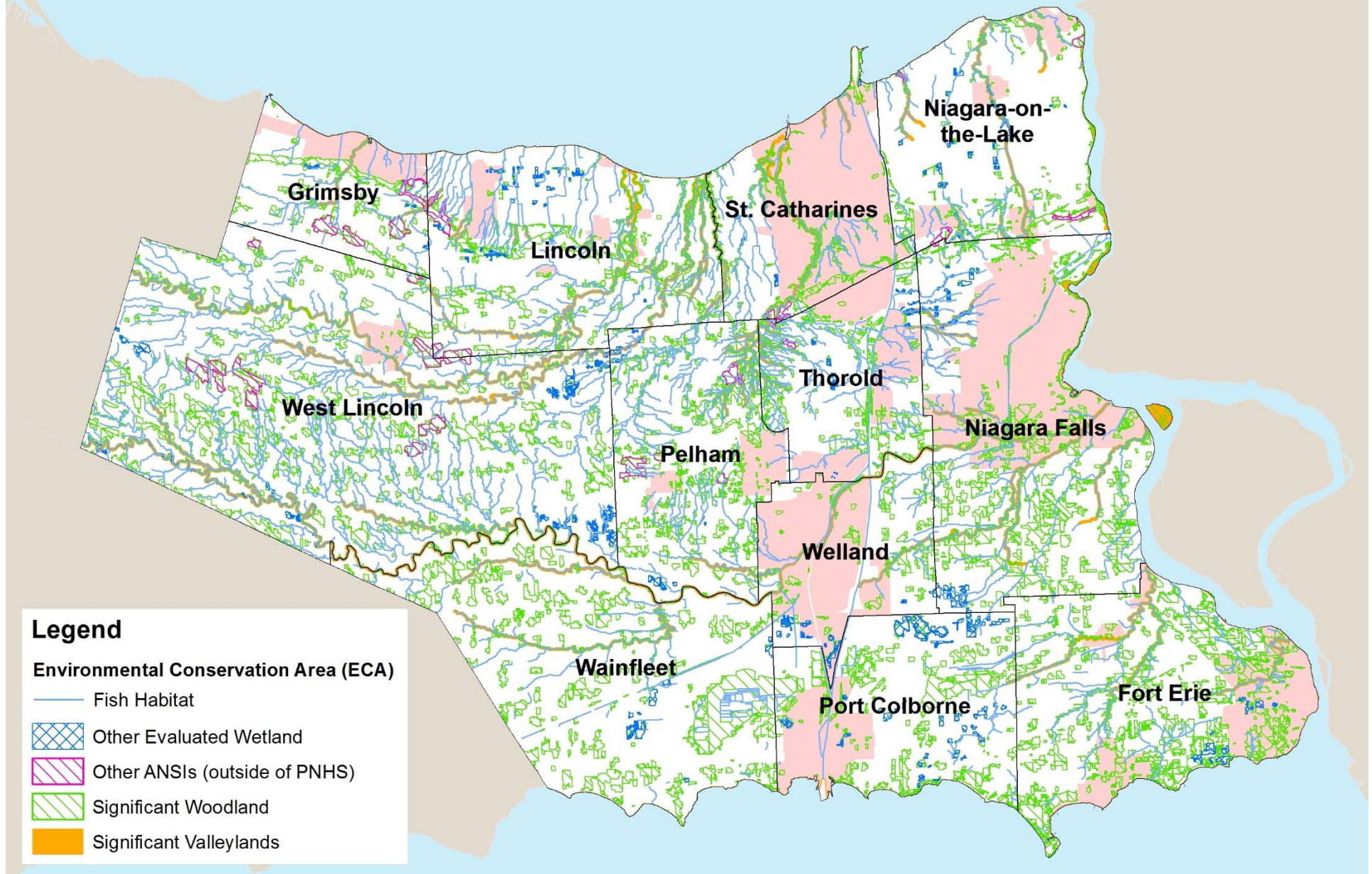
# Environmental Protection Areas







# Environmental Conservation Areas



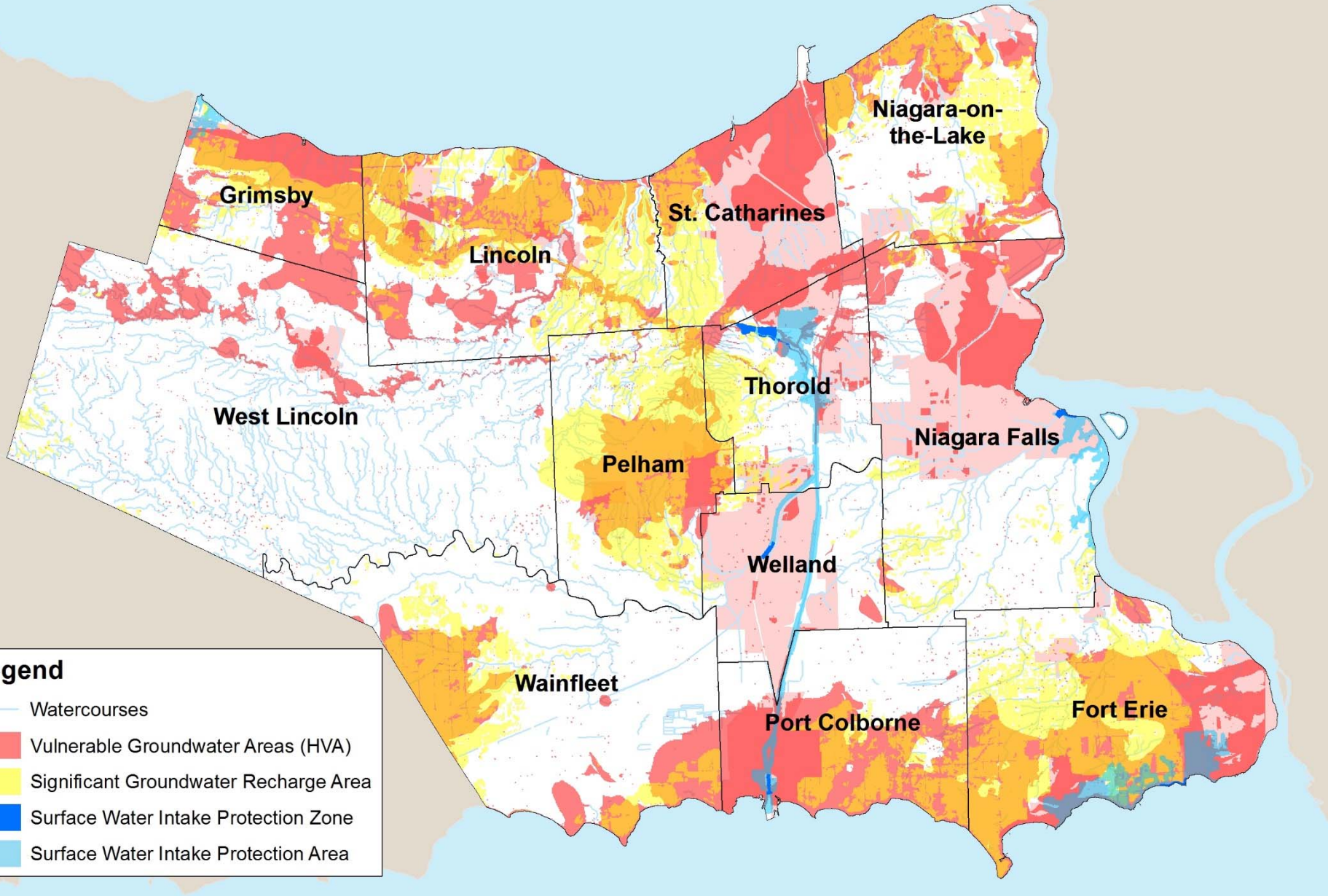
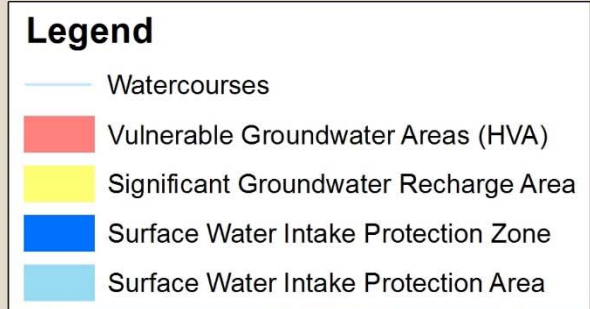


# Water Resources System

- *“Planning Authorities shall protect, improve or restore the quality and quantity of water by...identifying water resource systems consisting of groundwater features, hydrologic functions, natural heritage features and areas, and surface water features including shoreline areas, which are necessary for the ecological and hydrological integrity of the watershed.”*

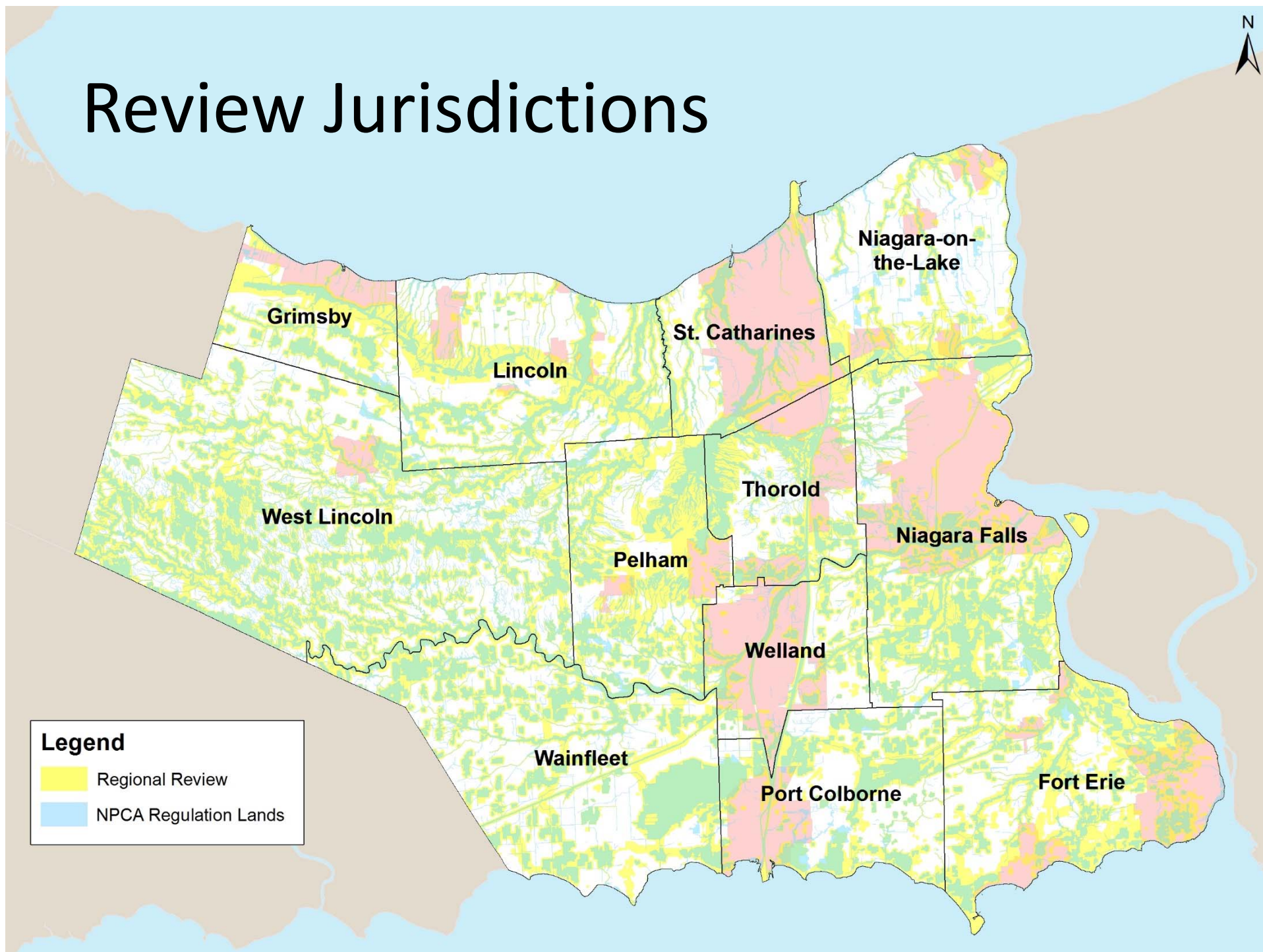
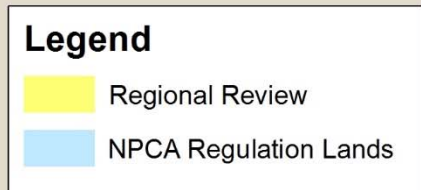
– Provincial Policy Statement

# Water Resources





# Review Jurisdictions





# Planning Review Process



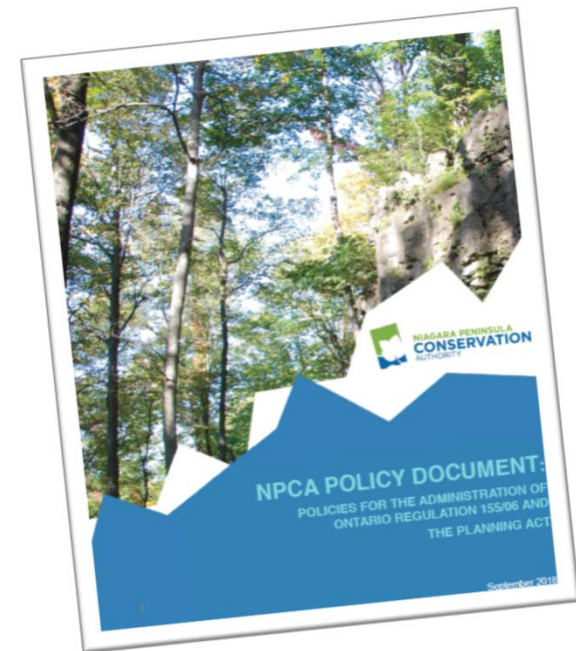
# Region Roles & Responsibilities

- Technical clearance with respect to natural heritage features
  - Wetlands
  - Significant Woodlands
  - Significant Wildlife Habitat
  - Significant Valleylands
  - Significant ANSIs
  - Fish Habitat
  - Water Resources



# NPCA Roles & Responsibilities

- Technical clearance with respect to natural hazards
  - Flooding hazards
  - Beach and erosion hazards
  - Hazardous lands and sites
  - Regulated watercourses
  - Wetlands
- Legislated by the  
*Conservation Authorities Act*





# Environmental Impact Study

- Planning tool to address environmental considerations
  - Existing conditions/field work
  - Constraints analysis
  - Ecological Impact Assessment
  - Mitigation Measures
- EIS Guidelines permit waiving for small scale residential and agricultural developments
- Administrative updates planned in 2019

# Woodland By-Law (30-2008)

- Administered and enforced by NPCA
- Good Forestry Practices Permit required for:
  - Commercial tree harvesting
  - Non-commercial removals in EPA
- Exemptions
- To be reviewed in 2019, including public consultation

# Review Responsibilities Summary

Environmental Features/Considerations	NPCA	Region
Flooding Hazards	X	
Beach and Erosion Hazards	X	
Hazardous Lands and Sites	X	
Regulated Watercourses	X	
Wetlands	X	X
Wildland Fires		X
Species at Risk Habitat		X
Significant Woodlands		X
Significant Wildlife Habitat		X
Significant Valleylands		X
Significant ANSIs		X
Fish Habitat		X
Water Resources		X