

2021 Census Series

Population and Dwelling Counts

PDS 9-2022

April 6, 2022

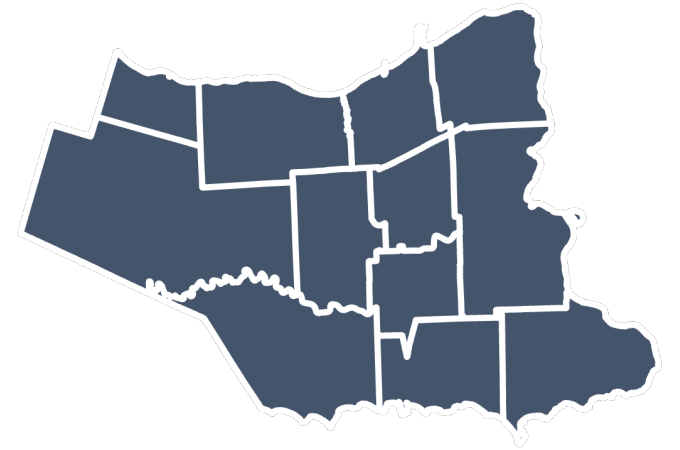
2021 Census: Population and Dwelling Counts



February 9, 2022 first release from the 2021 Census of Population

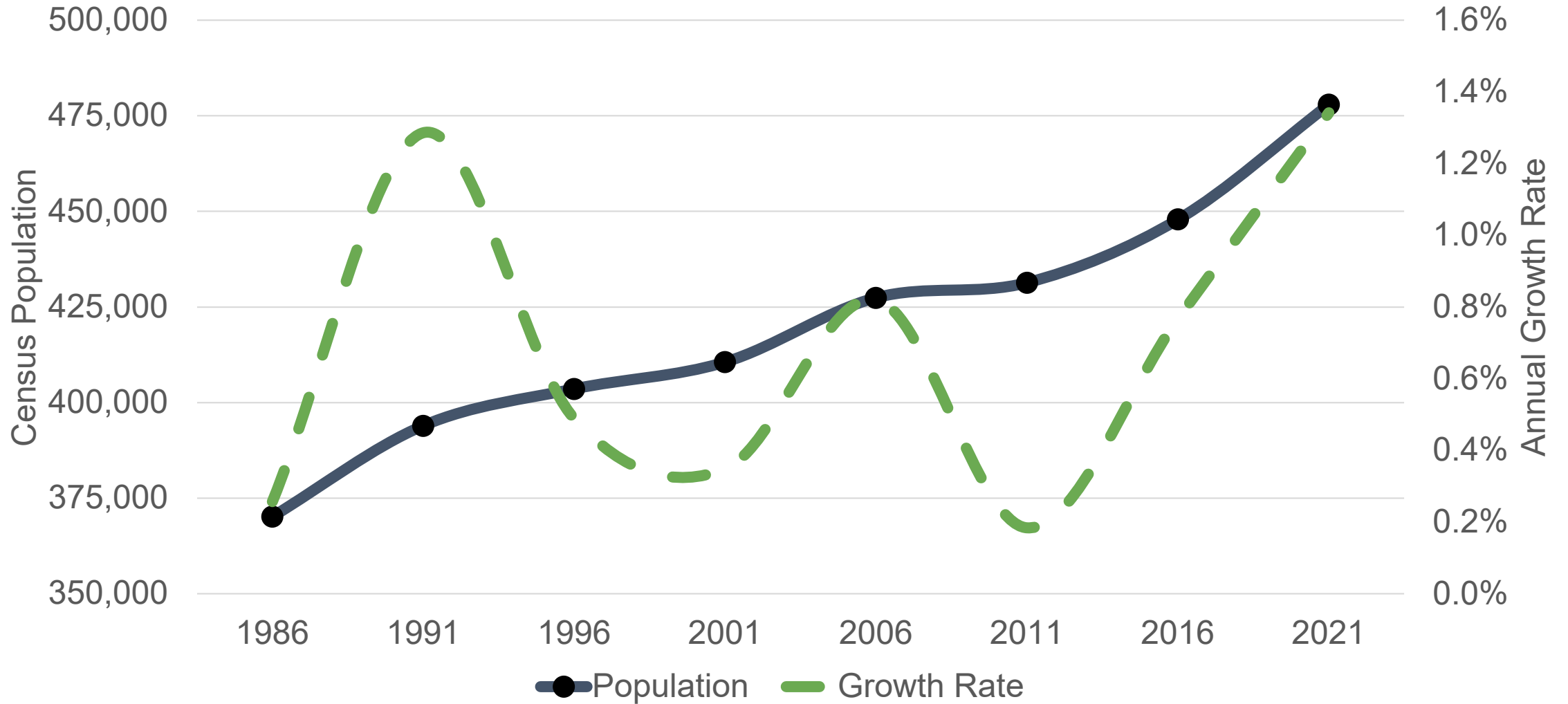


30,000 people and **11,685** dwelling units added between 2016 and 2021.

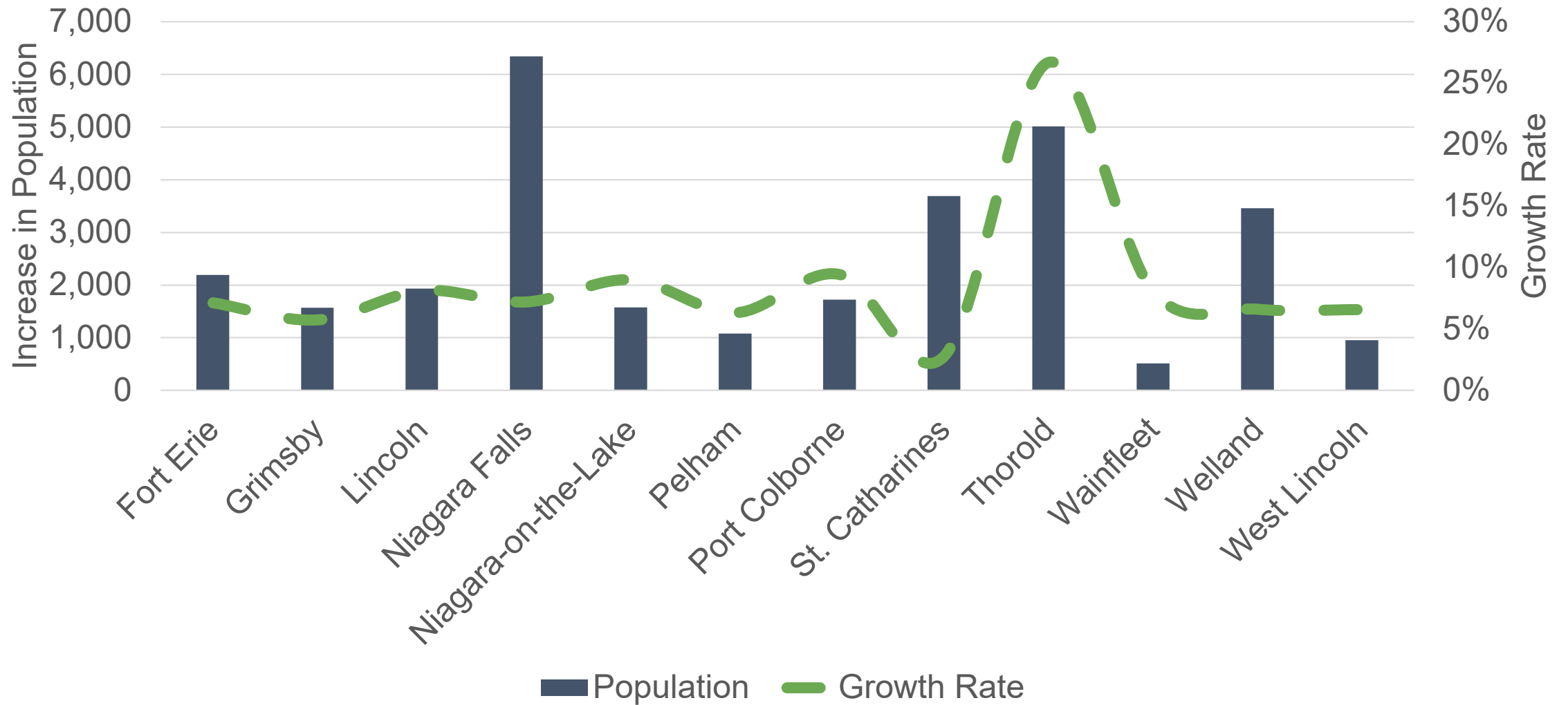


All municipalities experienced population growth for the first time since 2006.

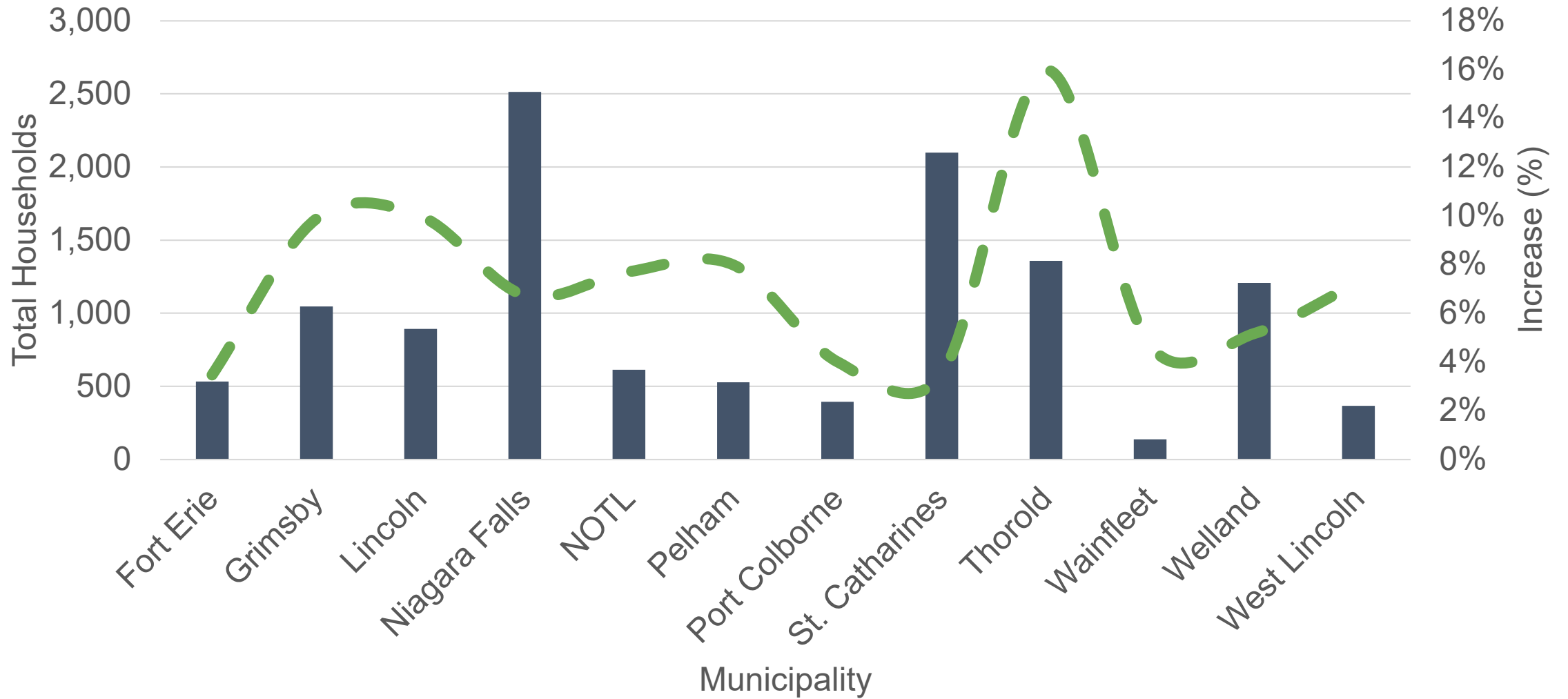
Niagara Region Population and Growth Rate

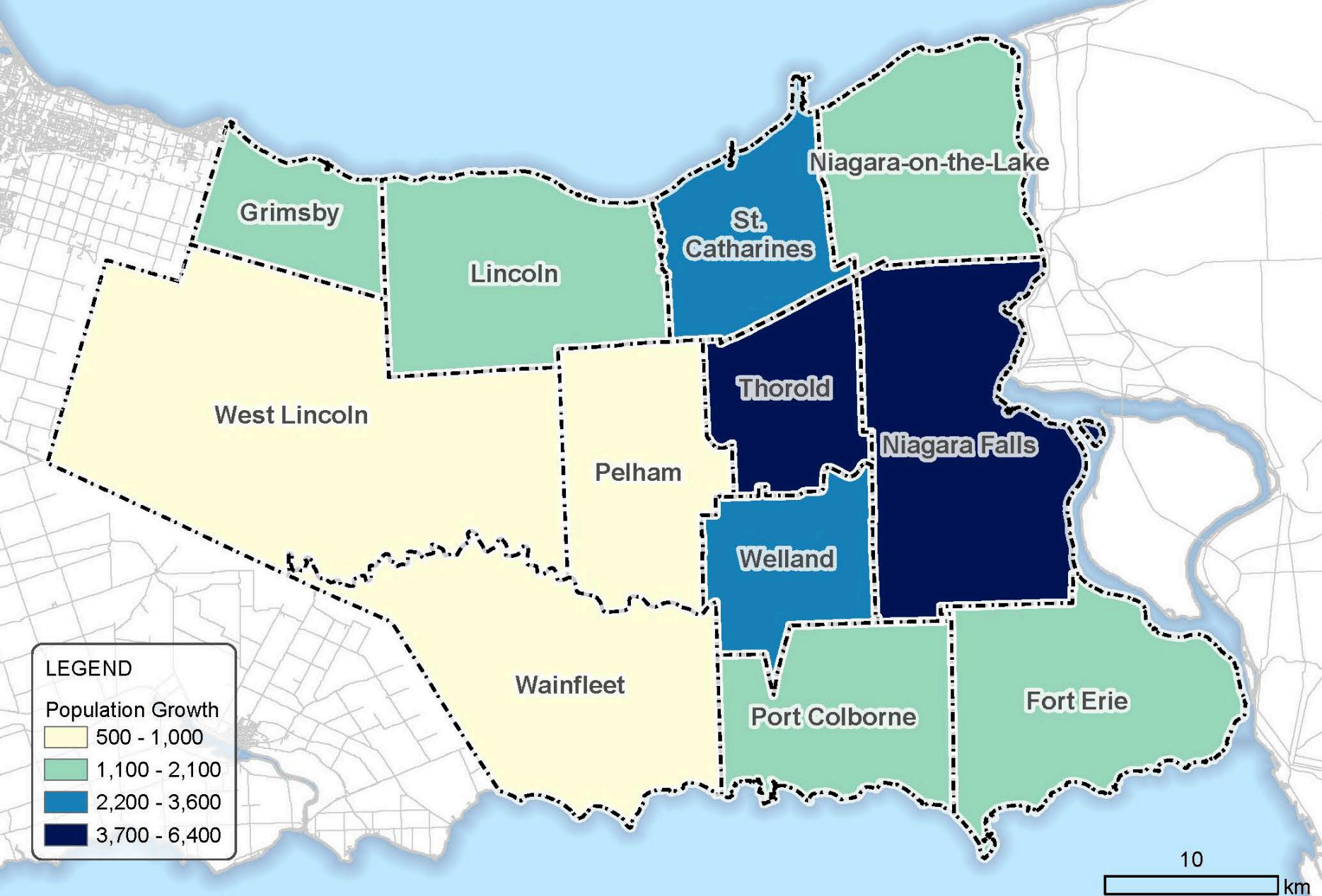


Municipal Population Growth: 2016 to 2021



Municipal Household Growth: 2016 to 2021



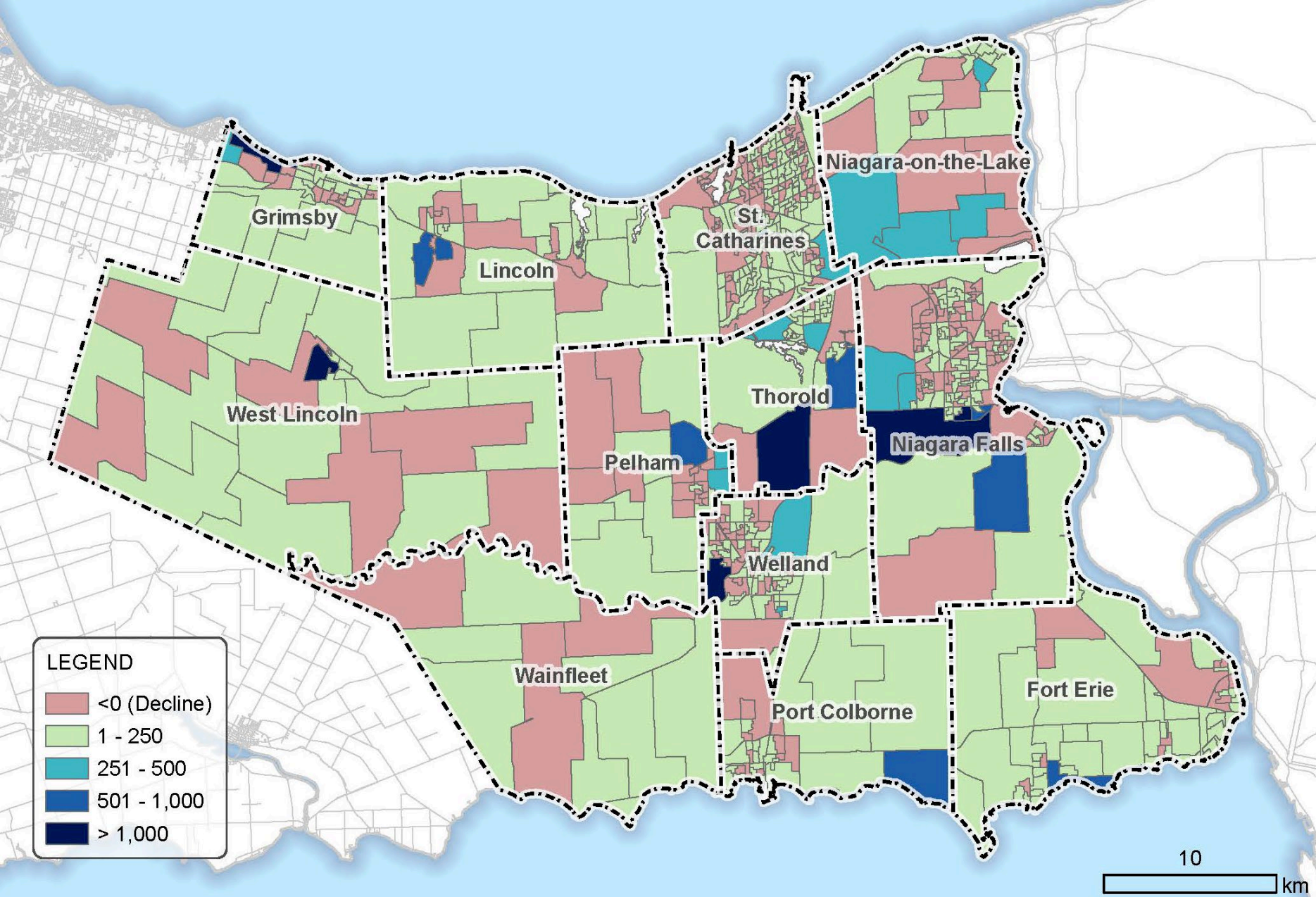


LEGEND
 Population Growth
 500 - 1,000
 1,100 - 2,100
 2,200 - 3,600
 3,700 - 6,400

62%
 Regional Population
 growth in HWY 406
 Municipalities

24%
 Regional Population
 growth in remaining
 QEW municipalities

27%
 Growth Rate in
 Thorold



Population growth focused primarily within newly developing areas

Population decline primarily within established neighbourhoods

Questions?