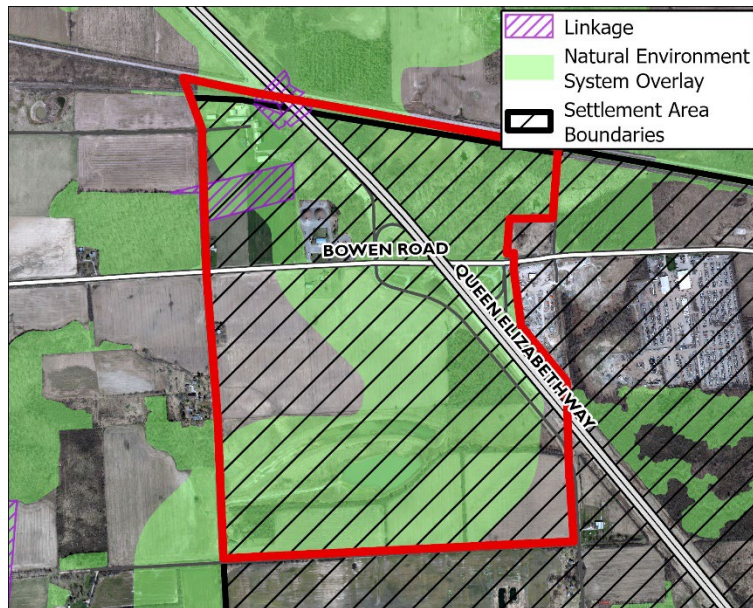


Appendix 2: Niagara Official Plan Mapping Modifications and References

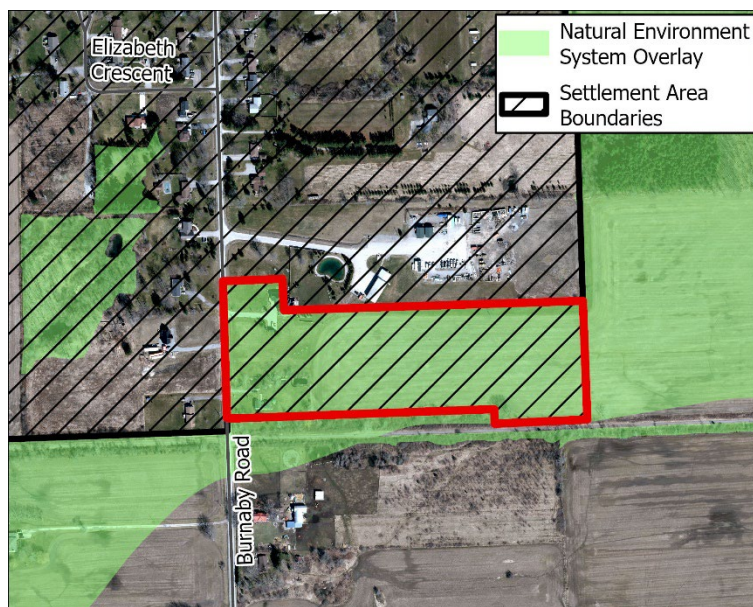
Policy 8.2.6 Modifications – Town of Fort Erie

Description: Schedule C2 has been modified to include a Natural Environment System Overlay and Linkage feature on the subject lands



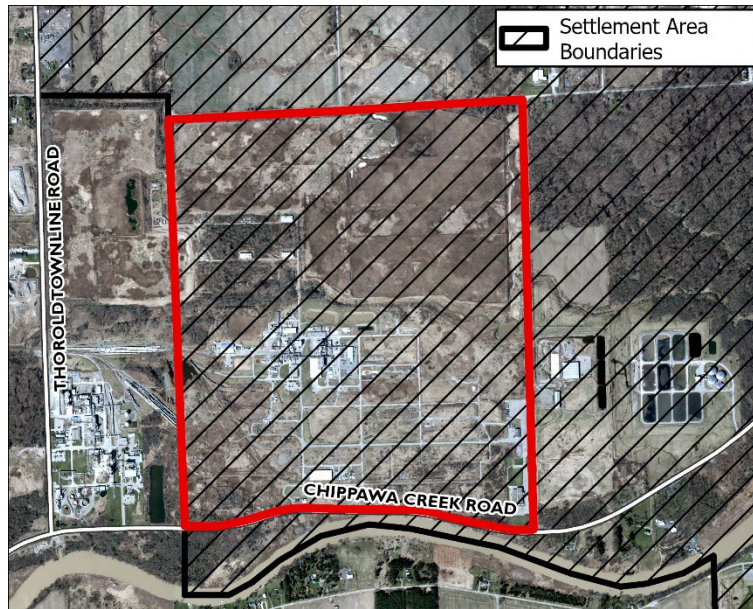
Policy 8.11.3 Modifications – Township of Wainfleet

Description: Schedule C2 has been modified to include a Natural Environment System Overlay and Linkage feature on the subject lands



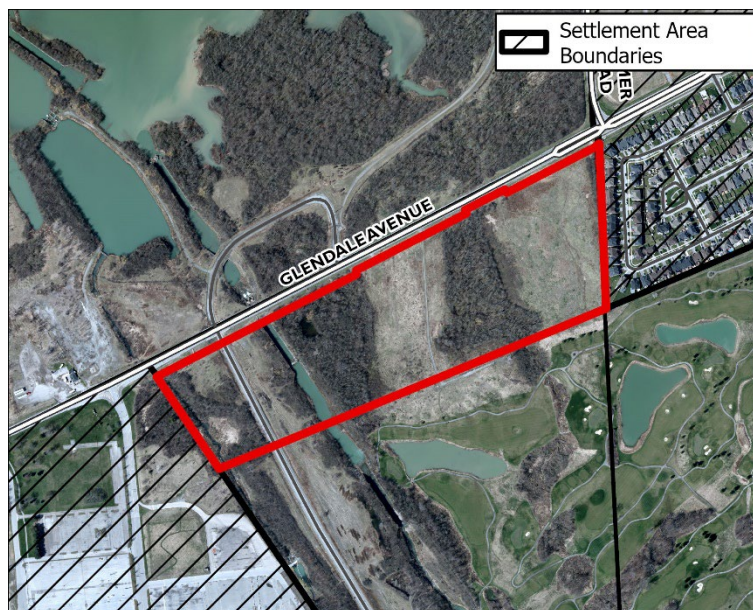
Policy 4.2.4.10 – City of Niagara Falls – Cytec Lands

Description: New Policy 4.2.4.10 has been added to the Niagara Official Plan to plan for uses on the “Cytec Lands” (identified in the map below).



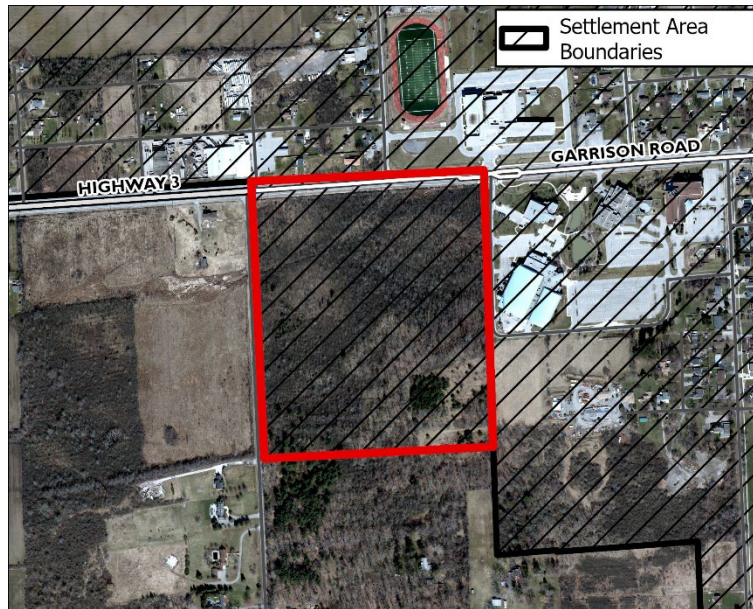
Policy 8.9.1 – City of St. Catharines – Kaneff Lands

Description: Modifications have been made to Policy 8.9.1 of the Niagara Official Plan, which refers to the “Kaneff Lands” (identified in the map below).



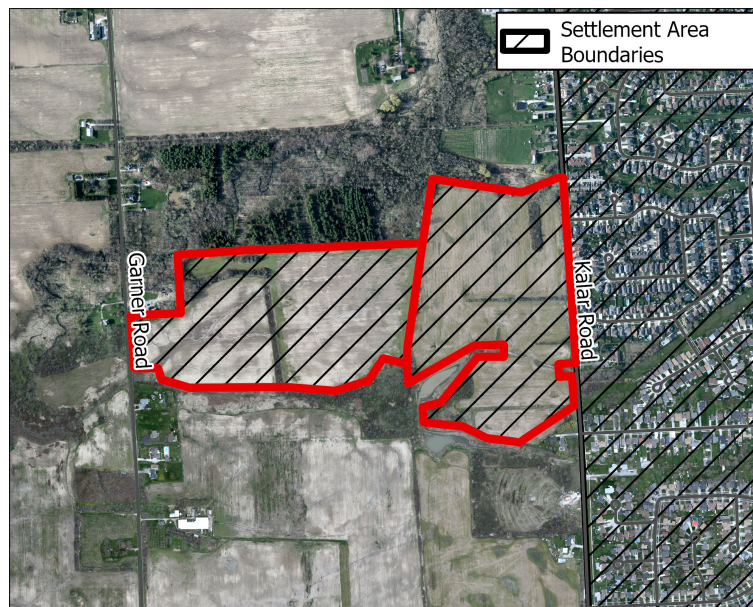
Urban Settlement Area Boundary Additions – Town of Fort Erie

Description: The lands identified in the map below have been added to the Urban Settlement Area for the Town of Fort Erie.



Urban Settlement Area Boundary Additions – City of Niagara Falls

Description: The lands identified in the map below have been added to the Urban Settlement Area for the City of Niagara Falls .



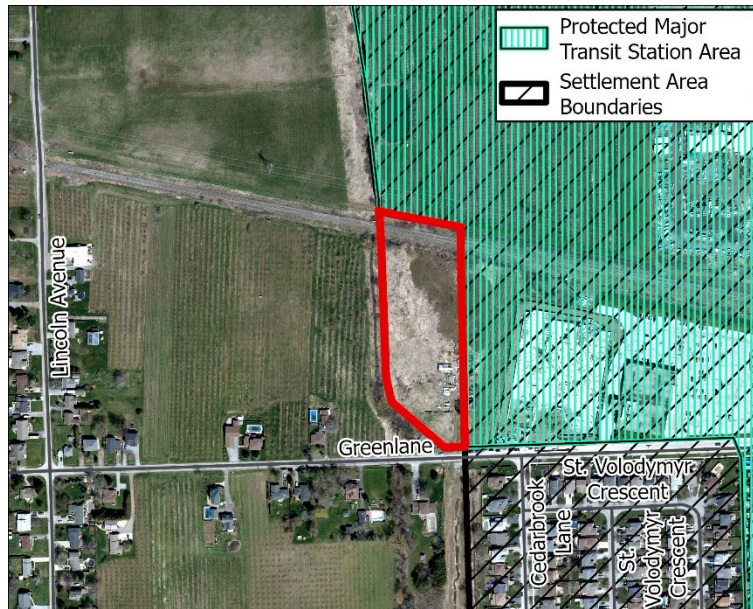
Urban Settlement Area Boundary Adjustments – City of St. Catharines

Description: Adjustments were made to the Urban Settlement Area boundary for the City of St. Catharines in order to conform to the mapping of the Greenbelt Plan.



Protected Major Transit Station Area Adjustments – Town of Lincoln

Description: Lands were removed from the Town of Lincoln Protected Major Transit Station Area in order to align with the mapping of the Greenbelt Plan.



Protected Major Transit Station Area Adjustments – Town of Grimsby

Description: Lands were removed from the Town of Grimsby Protected Major Transit Station Area in order to align with the mapping of the Greenbelt Plan.

