

Niagara's Situation Table Expansion: A CSWB Initiative

Public Health and Social Services Committee
September 12, 2023

Anahita Jabbari, Situation Table Specialist

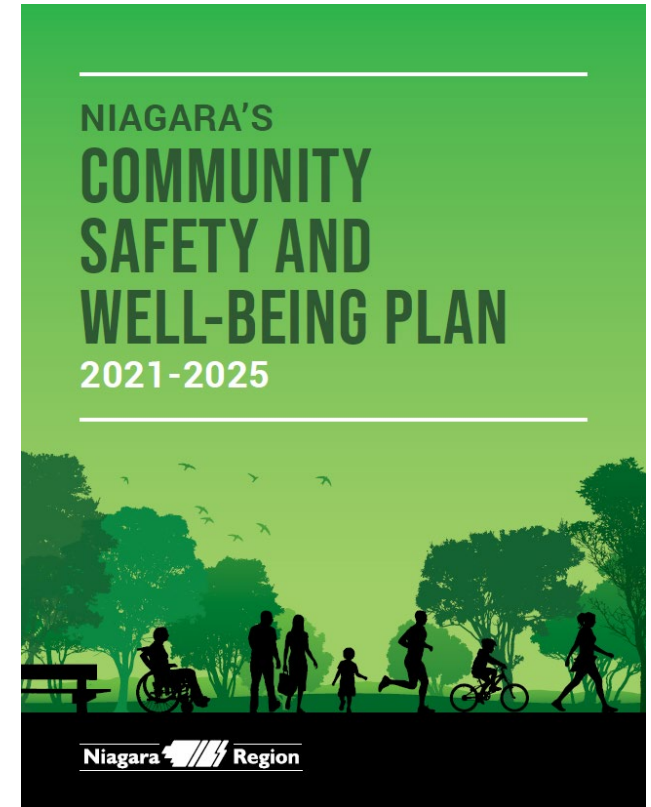
Michelle Johnston, Program Manager, Community Safety and Well-Being

Outline

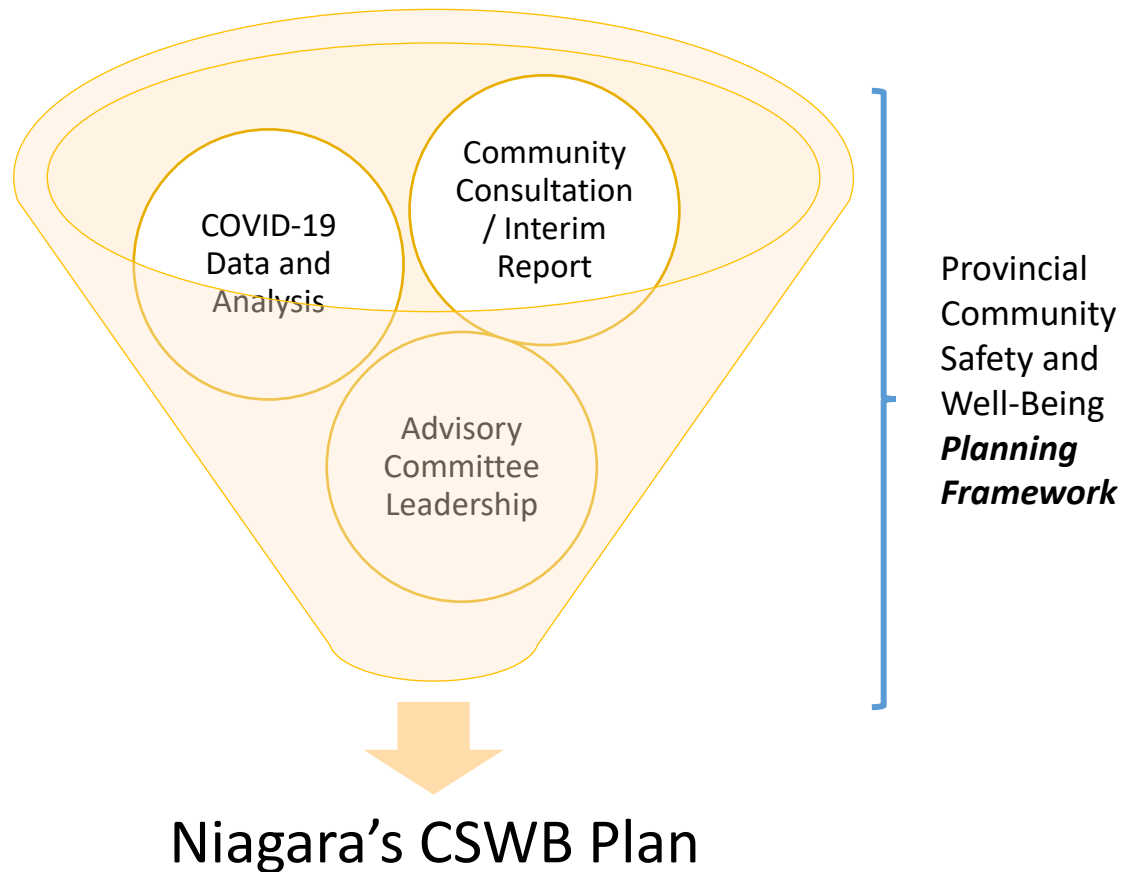
- An overview of Community Safety and Well-Being planning in Niagara
- The Situation Table model, history and it's benefits
- A community-led, local approach to expansion

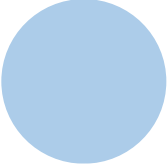
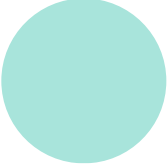
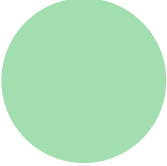
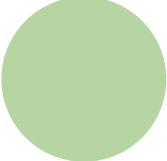
Overview

- Model for multi-sector collaboration and collective impact
- Led by the Advisory Committee
- Responding to priority issues via Action Tables
- Holistic approach with upstream focus
- Mandated under the Police Services Act



Local Approach & Areas of Focus



-  Mental health and addictions
-  Housing and homelessness
-  Poverty and income
-  Systemic discrimination

Niagara's CSWB Plan



Action

- Streamline responses to 911 calls involving mental health and addictions
- Implement recommendations within *Mno Bmaadziwin*
- Expand Situation Table model
- Prevent youth involvement in crime (*new 2023*)



Align

- Improve access to core mental health and addictions services
- Address opioid misuse through cross-sector collaboration
- Create a coordinated access system for those experiencing homelessness
- Support an economic development strategy that advances gender equality and inclusion
- Develop a local poverty reduction strategy

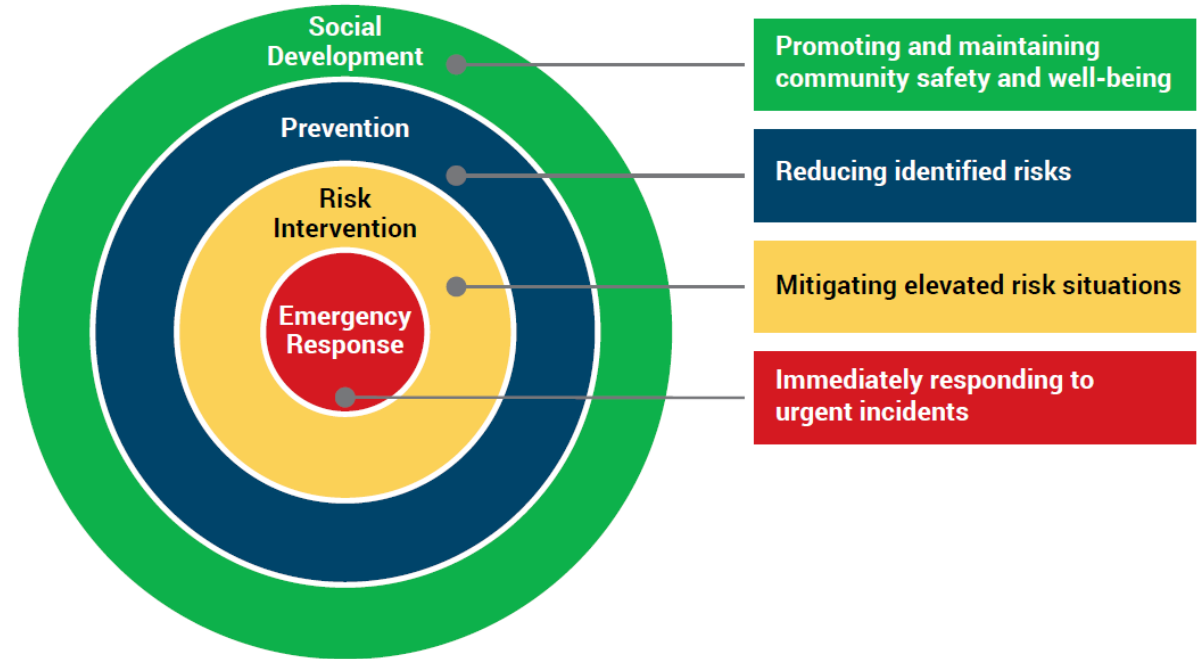


Monitor

- Health and well-being of seniors aging at home
- Health and well-being of individuals with disabilities
- Domestic/family violence and human trafficking

What is a Situation Table?

A regular meeting involving a group of professionals that work together to mitigate risk before an incident of harm or victimization occurs.



History of Model

- The Situation Table model has been used internationally and across Canada
- In Canada, the model was initially adopted in Prince Albert, Saskatchewan in 2011
- In Ontario, the first Situation Table was launched in Toronto in 2012
- In Niagara, the first Table launched in Port Colborne in 2018

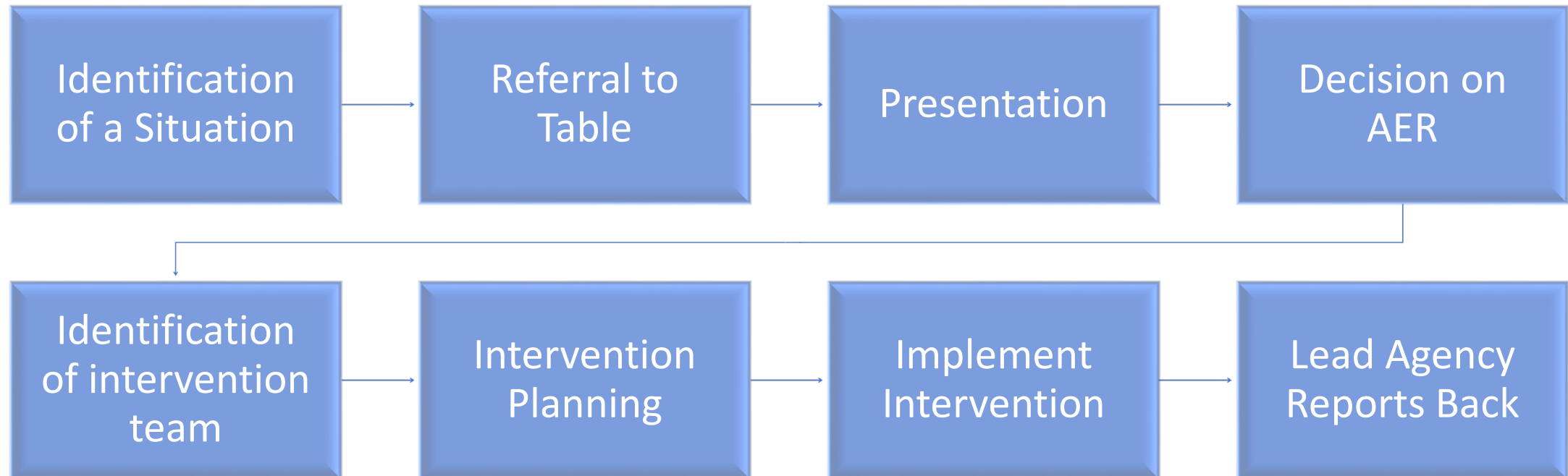
Example: Chelsea Hub



Acutely Elevated Risk (AER)

A situation negatively affecting the health or safety of an individual, family, group or place where there is a high probability of imminent and significant harm to self or others. The risk factors contributing cut across multiple human service disciplines.

Process

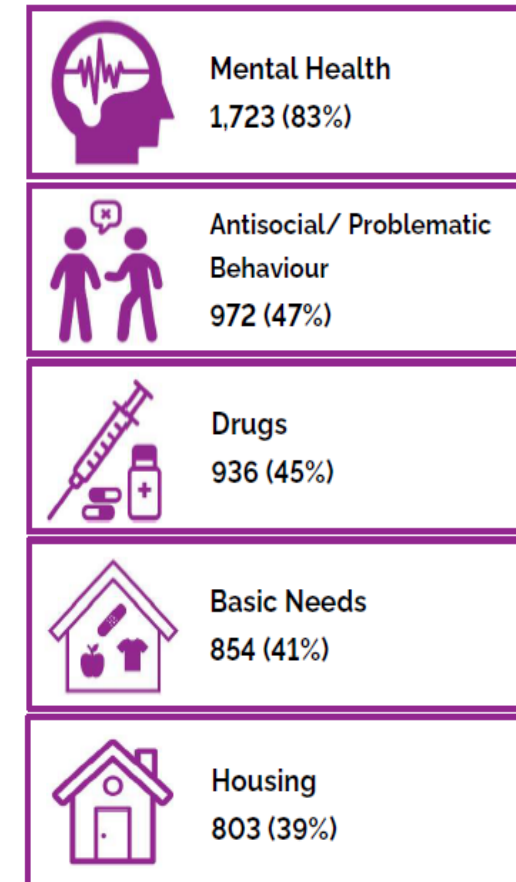


Benefits

- Improves community safety and well-being
- Reduces barriers and connects individuals to the services they need
- Increases awareness and knowledge of risks, trends and systemic issues
- Risk-driven as opposed to incident-driven
- Improves collaboration and coordination among service providers

Provincial Risk-driven Tracking Database

Top 5 Risk Categories – By Discussion

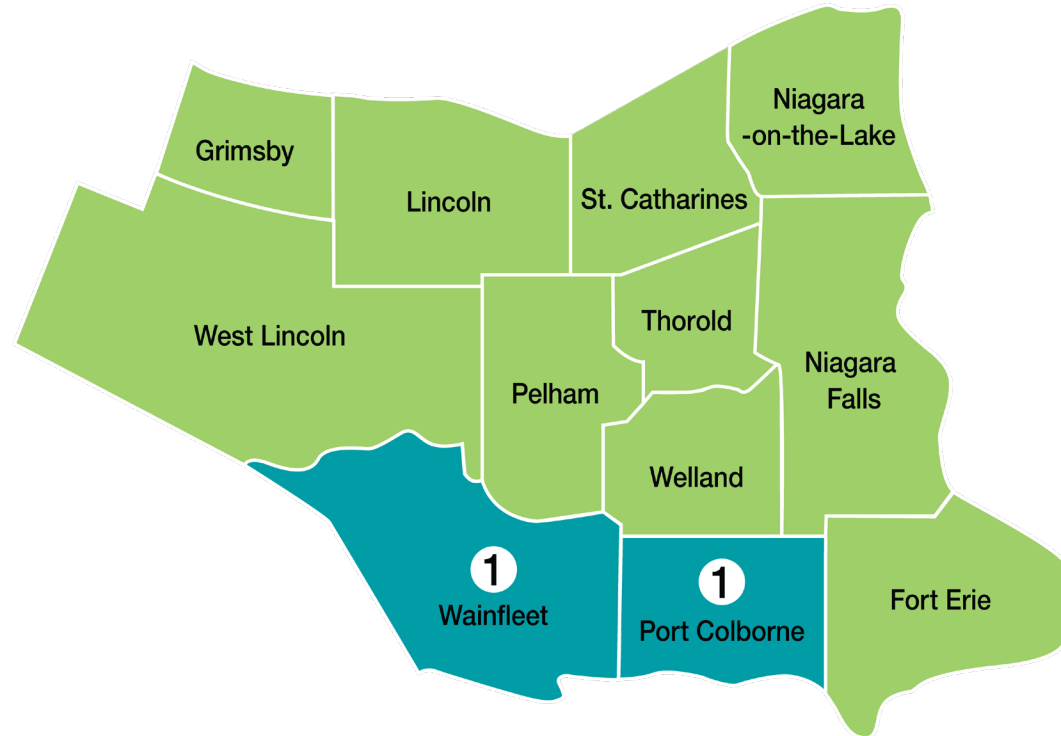


Our Approach to Expansion

- Community-led
- Data-driven
- Leverages best practices from across Ontario
- Ongoing collaboration with neighbouring municipalities

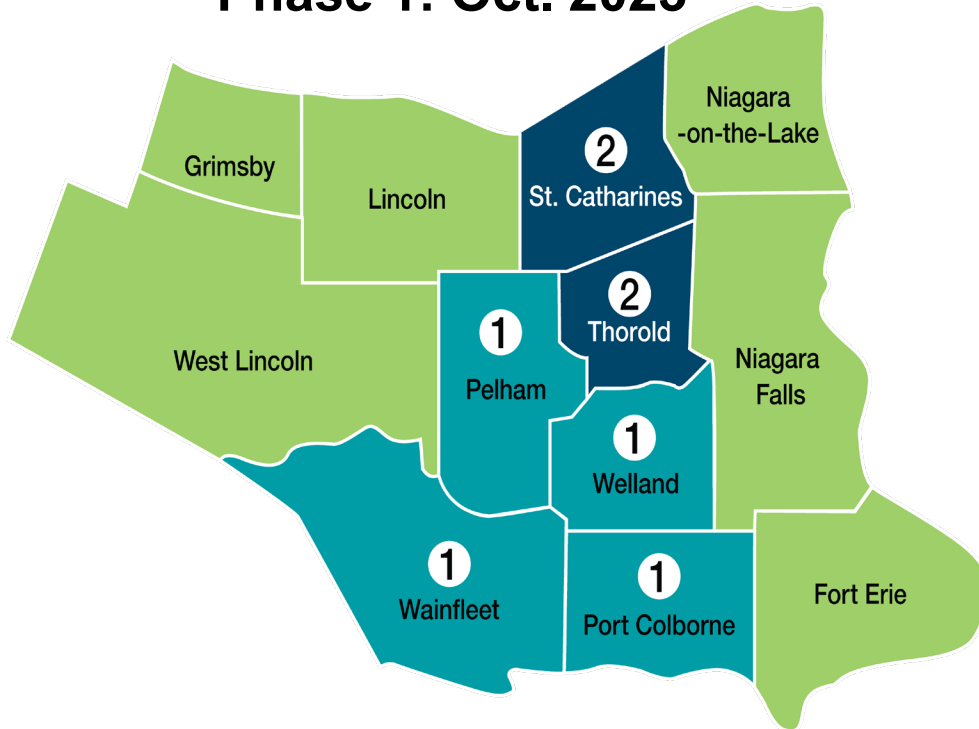


Current State

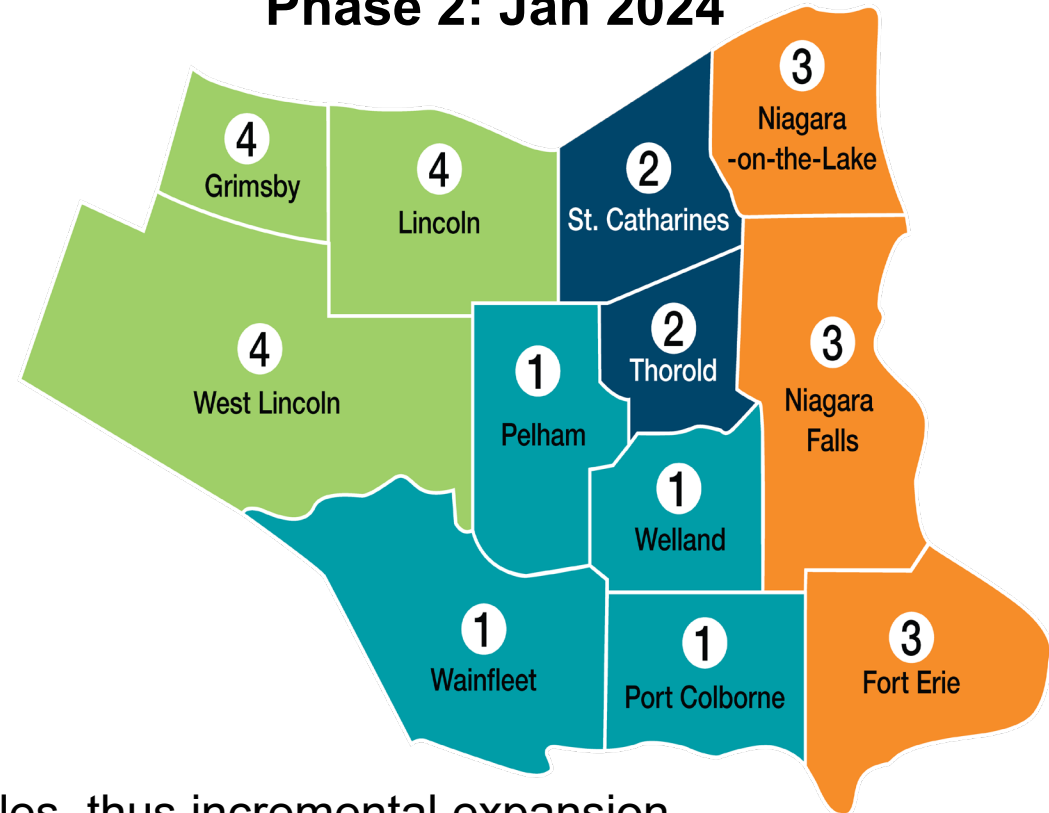


Phased Expansion Plan

Phase 1: Oct. 2023



Phase 2: Jan 2024



Note: Regional providers will participate at multiple tables, thus incremental expansion is necessary to support provider capacity to respond to situations.

Situation Table Project Plan

July – Aug. 2023

Sept. 2023

Oct. 2023

Oct. – Dec. 2023

Jan. 2024

Jan. 2024 – Mar. 2026

Plan

- Engagement with community
- Collect data to inform plan

Train

- Community-wide training
- Create tools and resources

Current state

Phase 1:
Launch

- **Launch St. Catharines & Thorold Table**
- **Expand Port-All Table to Welland & Pelham**

Monitor
&
Evaluate

- Weekly Table meetings continue
- Monitor outcomes and evaluate process

Phase 2:
Launch

- **Launch Niagara Falls, NOTL & Fort Erie Table**
- **Launch West Niagara Table**

Monitor
&
Evaluate

- Weekly Table meetings continue
- Monitor outcomes and evaluate process

Questions

Anahita Jabbari, Situation Table Specialist, Community Safety & Well-Being
Commissioner's Office, Community Services

anahita.jabbari@niagararegion.ca

Michelle Johnston, Program Manager, Community Safety & Well-Being
Commissioner's Office, Community Services

michelle.johnston@niagararegion.ca