

5 minute presentation for Region PEDC Jan 10, 2024

On behalf of my wife and myself,

Our experience living next to a quarry has lasted almost 50 years. We still experience large haulage trucks passing past our back yard on a continuing basis.

If PCQ carries out their commitments in the time frame they are agreeing to in this application, it will be a vast improvement over the past.

There is one we have looked forward to ever since the previous approvals and licensing:

- Rehabilitation of Pit 2. This includes not only the sloping of the perimeter faces, but the ceasing of use for haulage, and the ceasing of pumping, and the acceleration of the filling of Pit 2 with water for final recreation use.

Others have different concerns, but I have a great concern for the environmental impacts of the quarry expansion, in particular the impact this extension will have on the adjacent wetlands and woodlands.

There is a great difference how the municipal drain crossing the extension site is being addressed. For the east tab, it is being addressed as a temporary realignment, to be conducted when they reach the drain, and for as short a time as possible, and then reinstated to its original location.

For the north tab, it is proposed to be addressed immediately, even though it will not be approached for upwards of 40 years, much later than East Tab 1X. It is proposed to create a permanent realignment, which will encroach on the north of the wetland – permanently, and not with the 30m buffer as on the south of the wetland. It will require monitoring of water levels in the wetland forever. It will remove the normal surface flow of water through the wetland which occurs during all rainfall events, even minor rainfalls. And it will require installation of a structure to try to match pre-installation water levels, also requiring regular water level monitoring. And finally, it will require diverting the upstream watershed to the wetland swamp during summer and fall every year for the 40 plus years duration of the operations.

The first conclusion of the Supplementary Water Balance, dated July 31, 2023, states:

*“The hydroperiod of the wetland (i.e. timing of swamp high and low-water conditions) can be maintained **IF** flows in the new alignment for Wignell Drain are diverted to the swamp during summer and fall using the proposed mitigation plan.”* (bold and caps added)

All this can be eliminated by conducting the north tab drain realignment, the same as the east tab realignment, when the mining approaches that reach of the drain, and restoring it to its original location as soon as that mining is complete. By PCQ’s calculations there is only about 2 months of aggregate

supply in Phase 3X, and that is a very generous estimate. That will have minimal to no impact on, and no risk to the wetland, and eliminate 40 plus years of monitoring, diversions, and maintenance.

There are no apparent benefits to conducting the north realignment immediately, but there are many benefits to delaying the realignment. Why would the proponent not delay the realignment of the North reach of the Wignell Drain until it is necessary?

There are numerous conditions related to timing in the Official Plan Amendment and the site plan notes. We ask that the same be applied to the north tab and north reach drain realignment, and that the realignment of the drain not be considered until the need for the aggregate beyond the drain is justified.

Respectfully,

Charline and Jack Hellinga

[REDACTED]

Port Colborne, ON [REDACTED]

[REDACTED]

[REDACTED]

5.0 CONCLUSIONS

In conclusion:

- The hydroperiod of the wetland (i.e. timing of swamp high and low-water conditions) can be maintained if flows in the new alignment for Wignell Drain are diverted to the swamp during summer and fall using the proposed mitigation plan;
- The water budget suggests an approximately 10% increase in annual surplus to SW2, but increases in the area being controlled by pumping rates provides an opportunity to reduce peak flows during large runoff events; and,
- Details for the storage and discharge rates from the quarry will be reassessed at the ECA approval stage, and any additional mitigation requirements will be evaluated at that time.

WSP Canada Inc.



Christopher Davidson, PEng
Senior Water Resources Engineer



Kevin Mackenzie, MEng, PEng
Senior Principal, Water Resources Engineer

CD/KMM/mp

Attachments: Figure 1: Location Plan
Figure 2: Flow Plan
Figure 3: Wetland Water Storage
Figure 4: Monthly Flows at SW2

Figure 1 - Location Plan

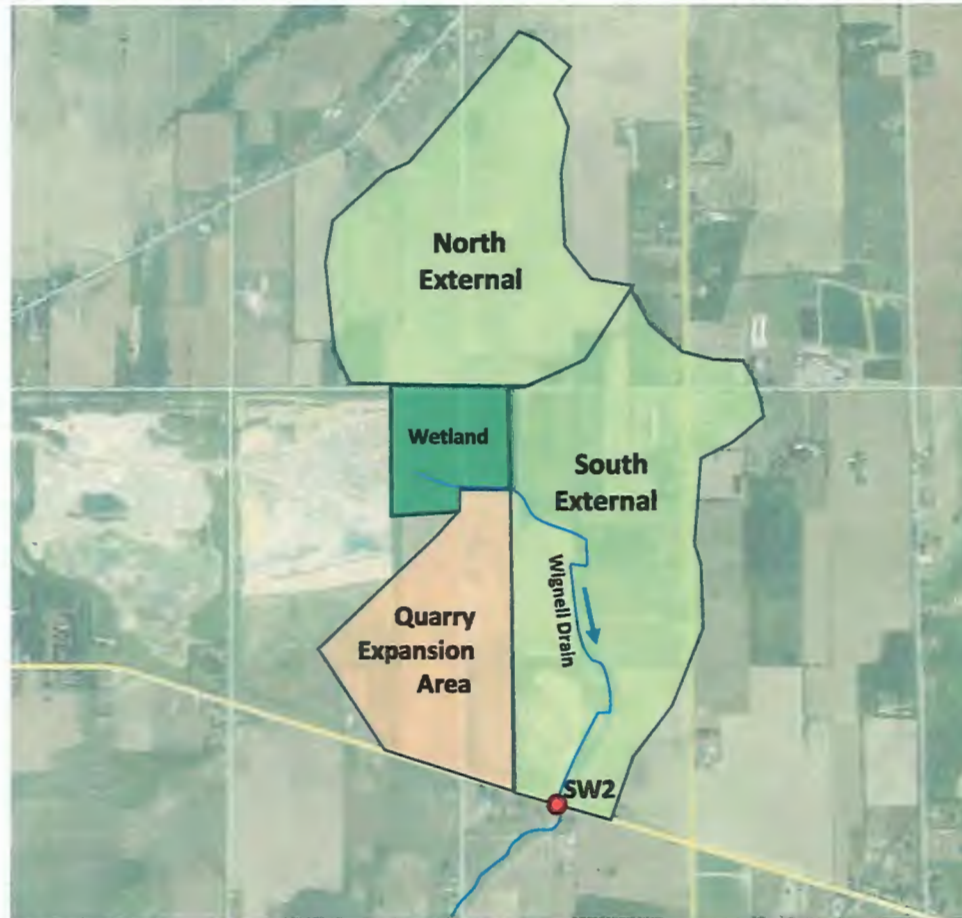


Image Source: Google Earth

Project: 21457143
Date: July 2023



Drawn By: CD
Reviewed By: KM