



Niagara Peninsula
CONSERVATION

nature for all



Niagara Peninsula
CONSERVATION
nature for all

NPCA HOSTED ALUS INFORMATION SESSION

LEILANI LEE-YATES, BES, MSPL.RPD, MCIP, RPP
Chief Administrative Officer/ Secretary-Treasure
Interim Director, Watershed Strategies and Climate
Change

Niagara Region
Agricultural Policy and Action Committee
9:00 AM - November 29, 2024

OVERVIEW

- NPCA Restoration Services
- NPCA and ALUS
- Recent Information Session
- Questions





ABOUT THE NPCA

- Founded in 1959 under the *Conservation Authority Act*
- The core mandate of Conservation Authorities is to undertake watershed-based programs to protect people and property from flooding and other natural hazards, and to conserve natural resources for economic, social, and environmental benefits.
- Oversees the Niagara Peninsula watershed, encompassing the Niagara Region, portions of the City of Hamilton, and portions of Haldimand County.
- Manages 41 Conservation Areas, including four flagship properties such as Ball's Falls, Binbrook, Long Beach, and Chippawa Creek. These lands are held in public trust for recreation, heritage preservation, conservation, and education.

VISION: Nature for all

We envision a healthy and vibrant environment with shared greenspace and clean water that sustains life for future generations.

NPCA WATERSHED



NPCA RESTORATION SERVICES

SUMMARY OF MAJOR PROGRAM ACCOMPLISHMENTS (2019 - 2023)*

2019



2020



2021



2022

- | | | | |
|--------------------------------------------------------------------------------------------------------------------------------------------------------------------------------------------------------------------------------------------------------------------------------------------------|--------------------------------------------------------------------------------------------------------------------------------------------------------------------------------------------------------------------------------------------------------------------------------------------------|--------------------------------------------------------------------------------------------------------------------------------------------------------------------------------------------------------------------------------------------------------------------------------------|-------------------------------------------------------------------------------------------------------------------------------------------------------------------------------------------------------------------------------------------------------------------------------------|
| <ul style="list-style-type: none"> • 25 Projects • 8,191 m² riparian habitat • 2.37 ha wetland created • 31.6 ha of reforestation • 57,817 trees planted • 1,019 shrubs planted | <ul style="list-style-type: none"> • 37 Projects • 13,075 m² riparian habitat • 4.7 ha wetland created • 18.3 ha of reforestation • 40,850 trees planted • 1,830 shrubs planted | <ul style="list-style-type: none"> • 61 Projects • 2.26 ha riparian habitat • 3.6 ha wetland created • 26.77 ha of reforestation • 63,393 trees planted • 7,926 shrubs planted | <ul style="list-style-type: none"> • 61 Projects • 3.92 ha riparian habitat • 3.7 ha wetland created • 27.1 ha of reforestation • 69,971 trees planted • 4,279 shrubs planted |
|--------------------------------------------------------------------------------------------------------------------------------------------------------------------------------------------------------------------------------------------------------------------------------------------------|--------------------------------------------------------------------------------------------------------------------------------------------------------------------------------------------------------------------------------------------------------------------------------------------------|--------------------------------------------------------------------------------------------------------------------------------------------------------------------------------------------------------------------------------------------------------------------------------------|-------------------------------------------------------------------------------------------------------------------------------------------------------------------------------------------------------------------------------------------------------------------------------------|

2023 → Completed **57** projects = **27 ha** reforestation, **3.89 ha** wetland creation, **2.98 ha** riparian restoration
70,700 trees planted, **4,109** shrubs planted, **2,204** herbaceous planted, **9** Agricultural BMPs
31.43 Total Hectares of Restored Area in 2023

* As reported in NPCA Annual Reports

NPCA RESTORATION CAPACITY



Wetland Habitat Restoration



Livestock Restriction & Crossings



Conservation Farm Practices



Tree Planting/
Woodland Restoration



Instream/Riparian Habitat Restoration



Upland Habitat Restoration



Nutrient Management



Water Conservation Practices

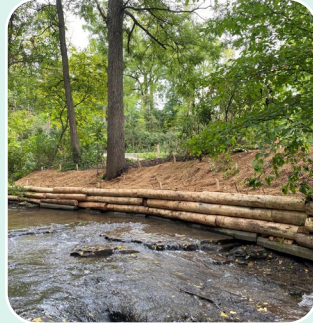


Cover Crops

Implementation Services Related to Traditional Project Types



ENHANCED WATERSHED RESTORATION AND STEWARDSHIP



Internal Restoration Services

NPCA Conservation Areas

CA Strategy

Capital Projects

LID

Habitat and water

Watershed Restoration Services

Large-scale projects

Fee for service

Municipal and private

Private Land Services

Habitat, biodiversity, water quality improvement

Nature Based Solutions

Cost -share

Agricultural Stewardship Services

Nature Based Solutions

Best management practices

Water quality improvement

Engagement

Urban Stewardship Services

Residents

Municipalities

Schools

Corporate Stewardship Services

Office greening

Volunteering

Fee for service



AGRICULTURAL STEWARDSHIP

- Outreach and education, including demonstration projects and on-farm workshops;
- Incentives for implementing agricultural best management practices such as nutrient management projects, livestock exclusion fencing, and erosion control projects; and
- Supporting agricultural stewardship initiatives in the watershed.



PRIVATE LAND SERVICES

- Same project-based services offered under the former Restoration Grant Program however operating under a cost sharing approach
- Focus on improving water quality, habitat and forest cover.
- Prioritization to support projects with high strategic or great ecological value.



ALUS PROGRAM



ALUS engages farmers and producers in creating nature-based solutions on their land to build climate resilience and enhance biodiversity for the benefit of communities and future generations.

- Brings funding to farmers and producers to implement projects valued for production of biodiversity and ecosystem services, provides payments to maintain investments
- 8 Principles: Community-developed, Farmer-delivered, Targeted, Market Driven, Voluntary, Integrated – Delivery, Accountable, Science-based.
- Facilitated through independent governance model (Program Advisory Committee) with a minimum requirement of 50% representation by farmers/producers.
- International program, many communities across Canada, several in Southern Ontario

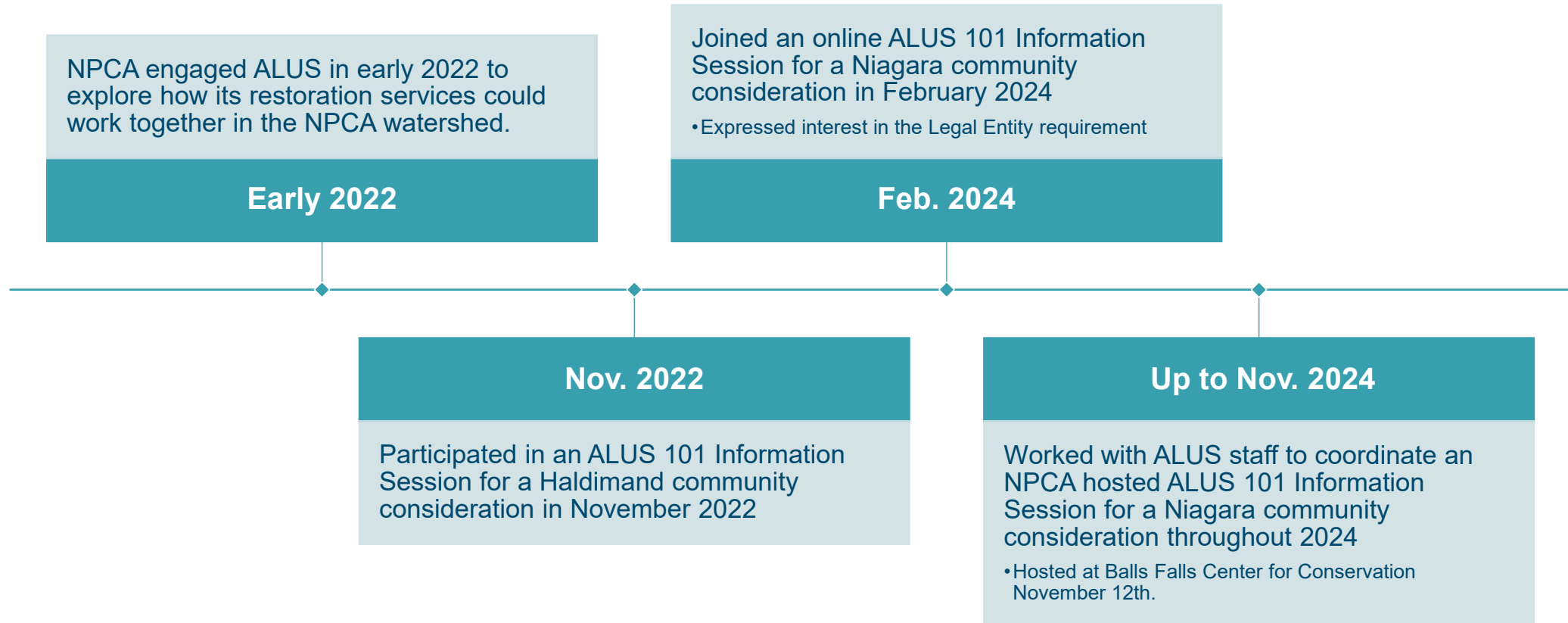


NPCA CONTEXT FOR ALUS

- NPCA applies research and science to assess watershed conditions, cumulative impacts, and climate risks, guiding strategies to protect, enhance, and restore healthy, climate-resilient watersheds as part of its integrated watershed management approach to managing resources.
- Highly respects the integrated and voluntary community-based engagement and governance model that ALUS is designed upon. Poses a complementary management tool that fits the existing services NPCA offers in terms of enhancement and restoration and aspirations to engage the agricultural community specifically.
- Enabling services supporting NPCA's accountability, efficiency, and effectiveness, aiding programs, governance, and public engagement are available as a potential legal entity for a local ALUS community.



NPCA & ALUS TO DATE



ALUS

Information Session

November 12, 7 p.m.

**Ball's Falls Centre for Conservation
3292 Sixth Ave, Lincoln, ON L0R 1S0**

In communities with active ALUS programs, farmers and ranchers can implement projects on marginal and environmentally sensitive lands.

Projects may include but are not limited to wetland creation, erosion control, seeding native grasses, creating pollinator habitat, and more.

Join NPCA and ALUS for an information session to learn more about this program.



Visit npca.ca/events
or Scan



RSVP by November 10:
Geoff Verkade, gverkade@npca.ca



SUCCESSFULLY HOSTED

Goal: Drive attendance to the ALUS Information Session and gauge interest from the farming community in the Niagara Peninsula watershed.

- Event attendance: approximately 30 people, engaged audience
- 69% open rate on direct invitation of directly engaged subscribers (quality audience developed from NPCA's stakeholder list) is significantly above industry average
- Social performance saw 68.5K total impressions, total reach of 25.8K unique individuals
- Covered by all relevant news outlets - Ads in Niagara Farms (only ag/farming local news), NOTL Local, Pelham Today, Thorold Today, Giant FM/New Country 89, Haldimand Press



[HOME](#) > [LOCAL NEWS](#)

ALUS program to be discussed at upcoming information session

The ALUS program empowers farmers and ranchers to create sustainable, ecosystemfocused projects on marginal or environmentally sensitive lands

Niagara-on-the-Lake Local Staff

Nov 5, 2024 3:15 PM

Updated Nov 5, 2024 7:21 PM



NEXT STEPS

- ALUS to continue independently testing desire for potential community in Niagara
- NPCA hosted session identified several individuals to advance that notion forward with ALUS staff through an ad-hoc steering committee
- NPCA assessing readiness and will be discussing implementation options to be considered as a potential legal entity for a Niagara ALUS community should that be its desire.
- NPCA and ALUS to continue collaborating towards discussions around a potential Niagara community



THANK YOU / QUESTIONS?

