

Rail Trail on Fonthill/Thorold Spurline as a Loop to the Greater Niagara Circle Route Trail

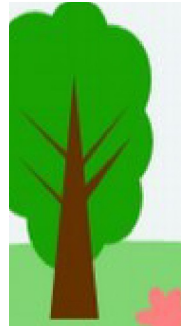
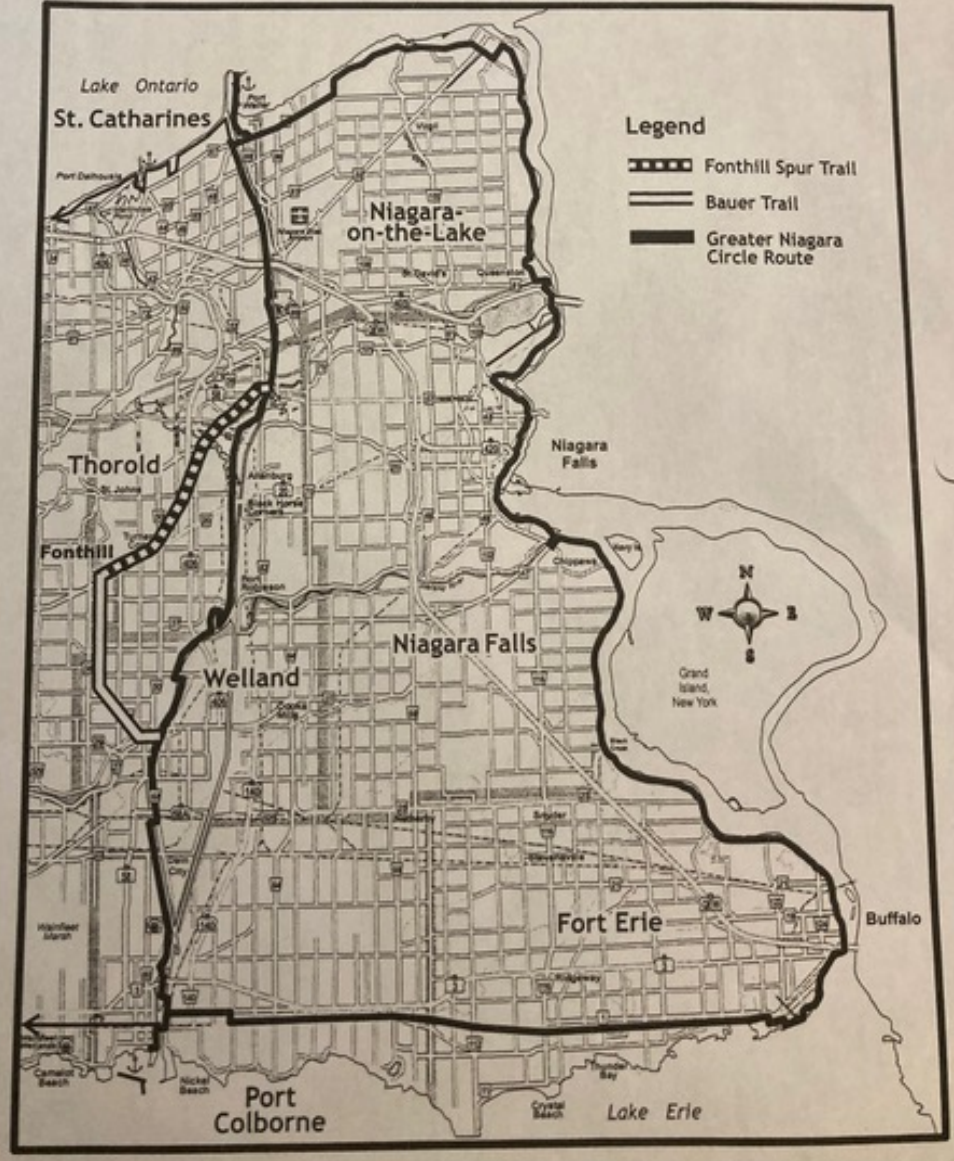




Fonthill Spur-Bauer Trail As a Loop of The Greater Niagara Circle Route Trail

DPD 73-2003
May 28, 2003
Page 2
Planning and Development Department

TSSC-C 1-2025





- Supported by Rotary Clubs of
- Fonthill, St.Catharines Lakeshore, St.Catharines South, St.Catharines, Welland and Niagara Falls and the
- Lions Clubs of Thorold & Fonthill



Rotary History in Parks Trails and Bridges



TSSC-C 1-2025

- Pedestrian Bridge in Thorold, Greater Niagara Circle Route
- Charles Ansell Park at Lock One
- 100th Year Anniversary Park Welland on Greater Niagara Circle Route
- Millenium Trail Niagara Falls
- Steve Bauer Trail, Fonthill





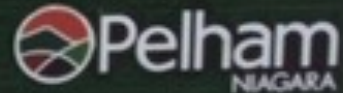


 **ROTARY NIAGARA
BRIDGE** 
Opened May 27, 2006



STEVE BAUER

Trails



THE ONTARIO
TRILLIUM
FOUNDATION



LA FONDATION
TRILLIUM
DEL' ONTARIO









Cycling Pelham

The Town of Pelham is home to unique experiences as cyclists will discover welcoming loops and interconnected routes that feature a range of rolling hills and farmlands to scenic villages and off-road trails. Along the designated loops are roadside stands, local shops and unique dining; the perfect pauses while you cycle picturesque Pelham.

- North and South Connecting Routes
- Berkshire Trail Riverfront Loop - 18 km
- Short Hills Loop - 15.4 km
- Villages Loop - 16 km

With a large section of the trail following a decommissioned rail line the route provides cyclists with mainly flat terrain surrounded by country views. Following the winding River Road section will enable cyclists to enjoy views of the airport, conservation area and waterway.

A moderate to advanced ride travels along scenic locations, roadside stands and rural farmland providing escarpment views. The route includes significant hills while rewarding cyclists with access to off road trails, Short Hills Provincial Park and Carolinian forest views.

This easy to moderate loop provides cyclists with modest to moderate hills and features the Fenwick and Ridgeville areas. With roadside stands and unique shops along the route cyclist can enjoy a leisurely pace while exploring.



Lions Club History in Parks

- Lions Club Park, Richmond Street Thorold, sold to the City for Basciano swimming pool
- Lions Club in Fonthill, rail corridor on rear property line
- Lions Club parks across the Region



Region's Transportation Strategic Plan schedule B12

- Fonthill Spurline is on this schedule
- Please keep it in new plan
- An application for a Federal Active Transportation Fund for Rail-to-Trail Projects is supported by MP Vance Badaway



Regional Roads

- Rail crosses RR 67, Beaverdams and
- RR 50, Merrittville HWY and RR 20
- Trail may use Beaverdams Rd road allowance in Thorold
- Please ask Regional PW staff to comment on road crossing configurations and designs where the trail would cross



Trail Connections to Steve Bauer Trail

- Steve Bauer Trail is a paved multi-use rail trail from Port Robinson Rd in Pelham (Fonthill) to Colbeck Rd. and Prince Charles Drive in Welland

Welland streets connect it to the Recreational Canal and a Rotary Park on Lincoln St.



Town of Pelham

- Town of Pelham have plans to build a multi-use trail on the Rail corridor along Station St, across RR 20 and up to town limits at Rice Rd. They are applying for a Trillium grant to complete this in 2025.

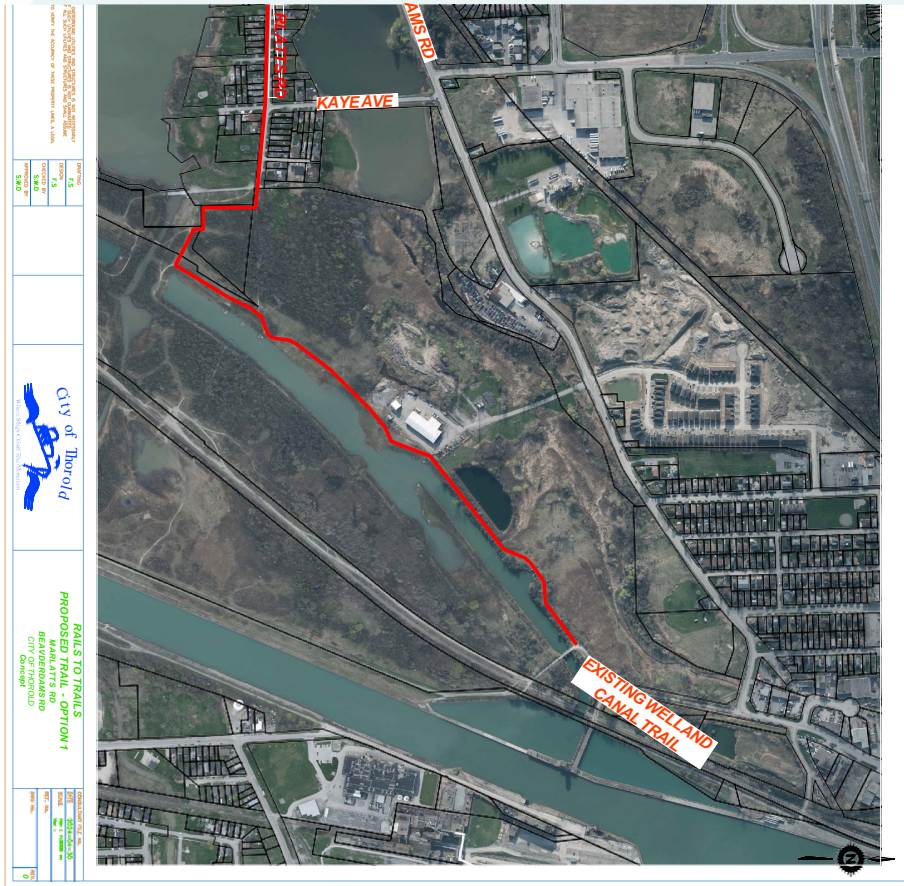


City of Thorold

Thorold has launched a study to determine an alignment for the trail between Marlatts Road and the Canal trail, Greater Niagara Circle route and a preliminary design study to transform the existing rail trail into a primary multi use trail from Marlatts Road to Town of Pelham boundary



Thorold Option



Close the loop

- The Rotary Clubs, Lions Clubs, Pelham Advocates for Trees and Habitat (PATH) and Free Wheelers Cycling Club are supporting a project to close the loop from The Greater Niagara Circle Route in Thorold through Fonthill to Welland to provide a safe off road
- active transportation corridor connecting urban Thorold to Fonthill and downtown Welland



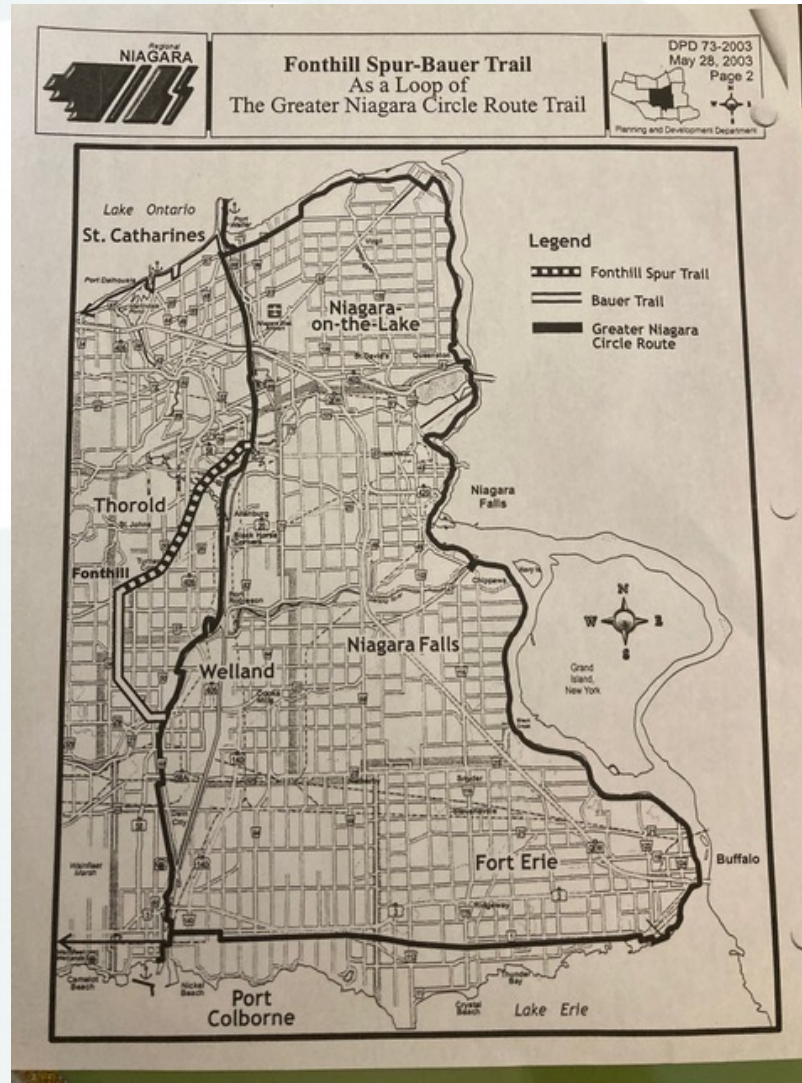
The ask

We ask that the Fonthill Spur-Bauer multi-use trail from 2003, remain in the new Transportation Strategic Plan which is being developed for 2027 and help in planning this project, with engineering advice on crossings and use of RR 67 road allowance

-



2003



Thank you for hearing us today