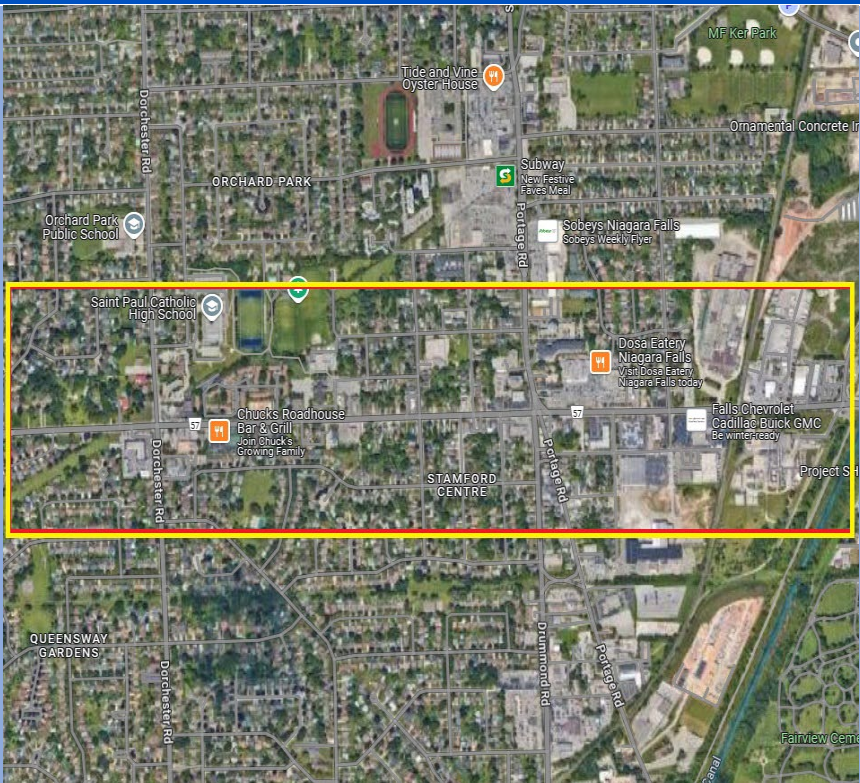



PW 4-2025 - Appendix 2 - Warrant Scorecards


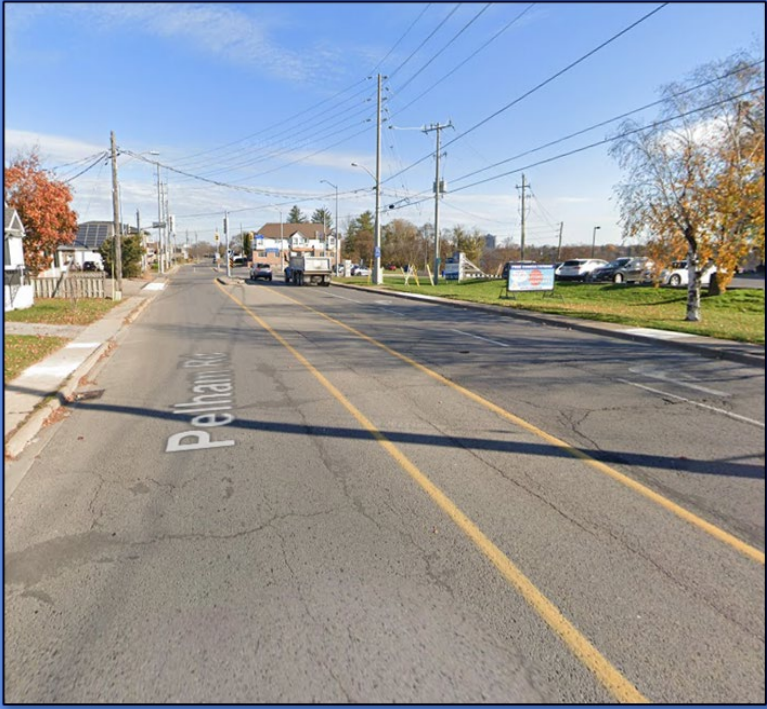
New Community Safety Zone – Thorold Stone Road

Location: Regional Road 57 (Thorold Stone Road) between Regional Road 102 (Stanley Avenue) & Rolling Acres Drive	Adjacent Land Use: Saint Paul Catholic, Notre Dame Catholic, John Marshal Public, EE Michelson Park, Glengate Park
Posted Speed: 50 km/h	Distance: 2.30 km
Municipality: City of Niagara Falls	
Location	Typical Cross Section
	

Warrant Scoresheet

Category	Criteria	Result	Score
# of Fatal and Injury Collisions	5 points per fatal or injury pedestrian or cyclist collisions per year (Result rounded up to next whole number)	1 fatal or injury collision/year	5
Operating Speed vs. Posted Speed	3 points for > 15 km/hr above, 2 points for 5 – 15 km/hr above, and 1 point for < 5 km/hr above	16 km/h	3
Average Daily Traffic Volume	3 points for > 20, 000 AADT, 2 points for 10, 000 – 20, 000 AADT, and 1 point for < 10, 000 AADT	20,400 AADT	3
# of Lanes	3 points for > 4 lanes, 2 points for 3 or 4 lanes, and 1 point for 2 lanes	4 lanes	3
% Coverage of Sidewalks	3 points for < 25%, 2 points for 25 – 75%, and 1 point for > 75%	100% coverage	1
Truck Volume	3 points for > 5%, 2 points for 3 – 5%, and 1 point for < 3% (Highest % of truck traffic along road segment at any intersection)	3% truck volume	2
Pedestrians Crossing or Parallel (8-hour period)	3 points for > 100, 2 points for 50 – 100, and 1 point for < 50 (Highest number of pedestrians crossing or walking parallel at any intersection)	218 pedestrians crossing	3
Intersections and Driveways (per km)	3 points for > 30, 2 points for 10 to 30, and 1 point for < 10	49 intersections or driveways per km	3
Land Use	3 points for schools, 2 points for retirement homes, and 1 point for other sensitive land uses	School (3), Park (2)	11
Total Score			34

New Community Safety Zone – Pelham Road

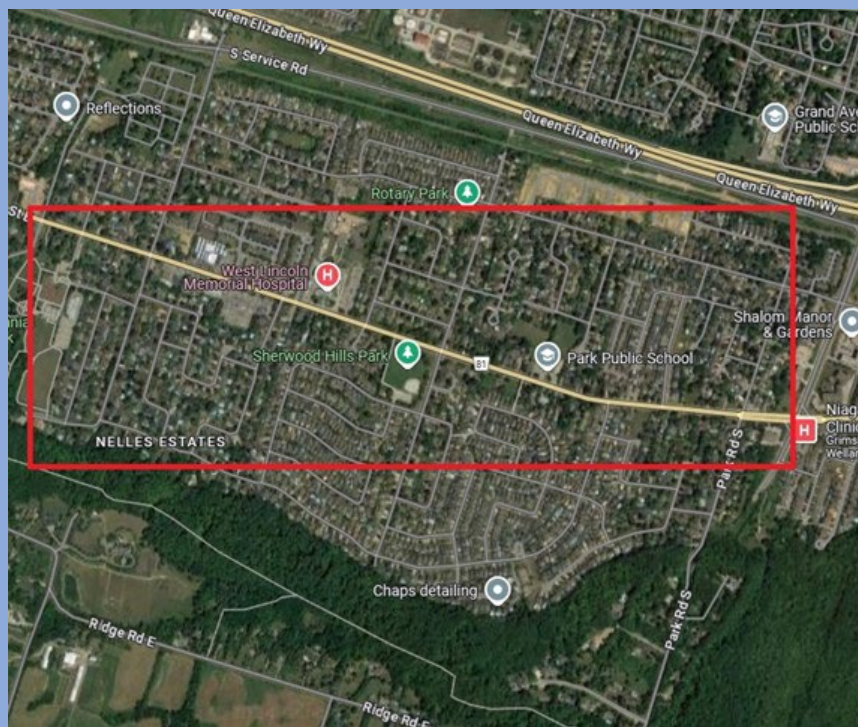
Location: Regional Road 69 (Pelham Road) between Regional Road 89 (Glendale Avenue) and First Street Louth	Adjacent Land Use: Power Glen School Rotary Park, Extendicare, Brockview Church
Posted Speed: 50 km/h	Distance: 2.5 km
Municipality: City of St. Catharines	
Location	Typical Cross Section
	

Warrant Scoresheet

Category	Criteria	Result	Score
# of Fatal and Injury Collisions	5 points per fatal or injury pedestrian or cyclist collisions per year (Result rounded up to next whole number)	1 fatal or injury collision/year average	5
Operating Speed vs. Posted Speed	3 points for > 15 km/hr above, 2 points for 5 – 15 km/hr above, and 1 point for < 5 km/hr above	16 km/h	3
Average Daily Traffic Volume	3 points for > 20, 000 AADT, 2 points for 10, 000 – 20, 000 AADT, and 1 point for < 10, 000 AADT	20,400 AADT	3
# of Lanes	3 points for > 4 lanes, 2 points for 3 or 4 lanes, and 1 point for 2 lanes	4 lanes	3
% Coverage of Sidewalks	3 points for < 25%, 2 points for 25 – 75%, and 1 point for > 75%	100% coverage	1
Truck Volume	3 points for > 5%, 2 points for 3 – 5%, and 1 point for < 3% (Highest % of truck traffic along road segment at any intersection)	3% truck volume	2
Pedestrians Crossing or Parallel (8-hour period)	3 points for > 100, 2 points for 50 – 100, and 1 point for < 50 (Highest number of pedestrians crossing or walking parallel at any intersection)	218 pedestrians crossing	3
Intersections and Driveways (per km)	3 points for > 30, 2 points for 10 to 30, and 1 point for < 10	49 intersections or driveways per km	3
Land Use	3 points for schools, 2 points for retirement homes, and 1 point for other sensitive land uses	School (3), Park (2)	11
Total Score			34

Updated Community Safety Zone – Main Street East

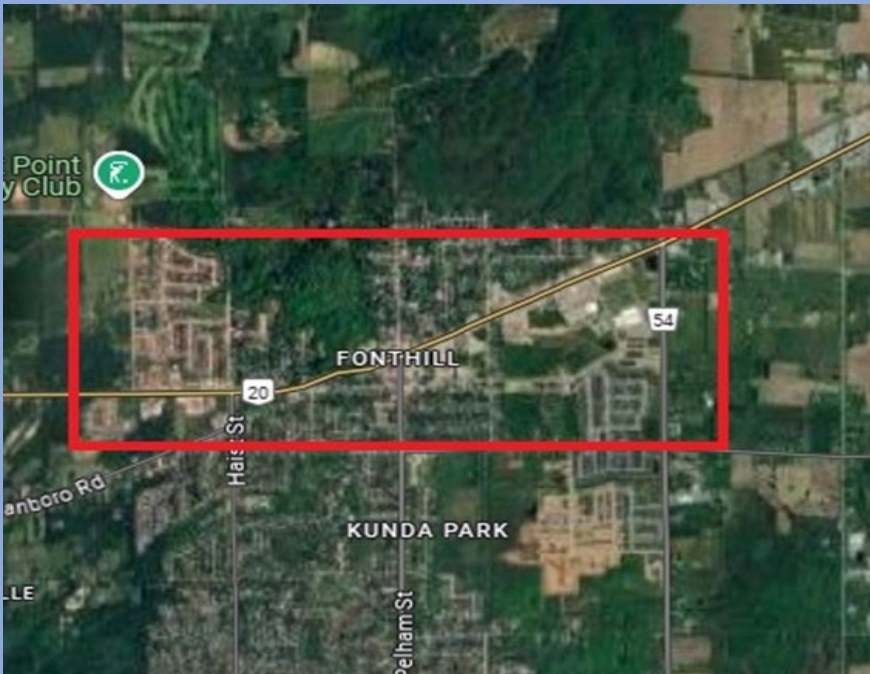

Location: Regional Road 81 (Main Street East) between Regional Road 14 (Bartlett Avenue) & Cemetery Road	Adjacent Land Use: Nelles Public School, Park Public School, Centennial Park, Sherwood Park
Posted Speed: 50 km/h	Distance: 2.5 km
Municipality: Town of Grimsby	Ranking: 8 (tied)
Location	Typical Cross Section



Warrant Scoresheet

Category	Criteria	Result	Score
# of Fatal and Injury Collisions	5 points per fatal or injury pedestrian or cyclist collisions per year (Result rounded up to next whole number)	2 fatal or injury collisions/year	10
Operating Speed vs. Posted Speed	3 points for > 15 km/hr above, 2 points for 5 – 15 km/hr above, and 1 point for < 5 km/hr above	7 km/h	2
Average Daily Traffic Volume	3 points for > 20, 000 AADT, 2 points for 10, 000 – 20, 000 AADT, and 1 point for < 10, 000 AADT	12,000 AADT	2
# of Lanes	3 points for > 4 lanes, 2 points for 3 or 4 lanes, and 1 point for 2 lanes	3 lanes	2
% Coverage of Sidewalks	3 points for < 25%, 2 points for 25 – 75%, and 1 point for > 75%	100% coverage	1
Truck Volume	3 points for > 5%, 2 points for 3 – 5%, and 1 point for < 3% (Highest % of truck traffic along road segment at any intersection)	2% truck volume	1
Pedestrians Crossing or Parallel (8-hour period)	3 points for > 100, 2 points for 50 – 100, and 1 point for < 50 (Highest number of pedestrians crossing or walking parallel at any intersection)	115 pedestrians crossing	3
Intersections and Driveways (per km)	3 points for > 30, 2 points for 10 to 30, and 1 point for < 10	45 intersections or driveways per km	3
Land Use	3 points for schools, 2 points for retirement homes, and 1 point for other sensitive land uses	School (2), Park (2)	8
Total Score			32

Updated Community Safety Zone – Highway 20 East

Location: Regional Road 20 (Highway 20 East) between Regional Road 54 (Rice Road) and Lookout Street	Adjacent Land Use: Marlene Stewart Streit Park, Fonthill United Church, Shorthills Retirement Community, Saint Alexander Catholic Elementary School, Gordan Klanger Park
Posted Speed: 50 km/h	Distance: 2.65 km
Municipality: Town of Pelham	
Location	Typical Cross Section
	

Warrant Scoresheet

Category	Criteria	Result	Score
# of Fatal and Injury Collisions	5 points per fatal or injury pedestrian or cyclist collisions per year (Result rounded up to next whole number)	1 fatal or injury collision/year	5
Operating Speed vs. Posted Speed	3 points for > 15 km/hr above, 2 points for 5 – 15 km/hr above, and 1 point for < 5 km/hr above	6 km/h	2
Average Daily Traffic Volume	3 points for > 20, 000 AADT, 2 points for 10, 000 – 20, 000 AADT, and 1 point for < 10, 000 AADT	19,000 AADT	2
# of Lanes	3 points for > 4 lanes, 2 points for 3 or 4 lanes, and 1 point for 2 lanes	5 lanes	3
% Coverage of Sidewalks	3 points for < 25%, 2 points for 25 – 75%, and 1 point for > 75%	100% coverage	1
Truck Volume	3 points for > 5%, 2 points for 3 – 5%, and 1 point for < 3% (Highest % of truck traffic along road segment at any intersection)	7% truck volume	3
Pedestrians Crossing or Parallel (8-hour period)	3 points for > 100, 2 points for 50 – 100, and 1 point for < 50 (Highest number of pedestrians crossing or walking parallel at any intersection)	76 pedestrians crossing	2
Intersections and Driveways (per km)	3 points for > 30, 2 points for 10 to 30, and 1 point for < 10	29 intersections or driveways per km	2
Land Use	3 points for schools, 2 points for retirement homes, and 1 point for other sensitive land uses	School (1), Church (1), Retirement home (2), Park (2)	10
Total Score			30