
Subject: Community Safety Zones – Annual Review

Report to: Public Works Committee

Report date: Tuesday, February 4, 2025

Recommendations

1. That the designation of Community Safety Zones **BE APPROVED** for the Regional Road segments listed in Appendix 1 to report PW 4-2025.

Key Facts

- This report seeks Council approval for two new Community Safety Zones (CSZs) and changes to the limits of two previously approved CSZs.
- CSZs are designated sections of road where public safety is of special concern, such as near schools, retirement homes, and hospitals.
- Traffic fines are increased in CSZs; this is done to help protect vulnerable road users by encouraging drivers to slow down and drive carefully.
- Staff conduct an annual review of CSZs under the Community Safety Zone policy.
- The two new CSZs will be included in the rotation schedule of ASE cameras. The number of ASE cameras in rotation will not increase.

Financial Considerations

The cost to establish a Community Safety Zone (CSZ) is solely related to the installation of signs which has a total estimated cost of \$500 (including non-recoverable HST). These costs can be accommodated within the approved 2025 Transportation Services operating budget.

Analysis

CSZs improve safety in areas where public safety is of special concern

The purpose of a Community Safety Zone is to protect vulnerable road users by encouraging drivers to slow down and drive carefully. CSZs indicate to drivers that they are within a zone where fines are increased through a special designation under the Ontario Highway Traffic Act. “Begins” and “Ends” signs are posted to show the legal

speed limits within the area. The rules of the road do not change within a Community Safety Zone; however, the penalties for violations are increased.

Two new CSZs are recommended based on an annual review of Regional Roads

In 2023 Council adopted an updated CSZ policy that established criteria and a warrant process for designating CSZs. This policy considers factors such as traffic speeds and volumes, collision history, number of pedestrians, and the type of road and assigns a series of points to determine if a CSZ is warranted. In order to satisfy the warrant for a CSZ, a minimum score of 25 points is required.

Under this policy, staff undertake an annual review of candidate Community Safety Zone locations using updated traffic and collision data.

Two new CSZs are recommended based on the 2024 review:

- Thorold Stone Road (Regional Road 57) – Rolling Acres Drive to Stanley Avenue (Regional Road 102)
- Pelham Road (Regional Road 69) – Glendale Avenue (Regional Road 89) to First Street Louth

Updated warrant scorecards for these locations are provided in Appendix 2.

Staff recommend minor changes to the limits of two other existing CSZs

These recommended changes will extend the existing CSZs to cover areas where nearby schools and retirement homes were not originally included:

- Main Street East (Regional Road 81) – Extend the current western limit of Nelles Road North/Nelles Road South approximately 300m to Cemetery Road to incorporate the access to Nelles Public School.
- Highway 20 East (Regional Road 20) – Extend the current western limit of Pinecrest Court approximately 800m to Lookout Street to incorporate Lookout Ridge Retirement Community.

The two new CSZs will be added to the rotation schedule of ASE cameras

Niagara Region currently operates eight ASE cameras, rotating through the existing 25 Community Safety Zones approximately every 90 days. Subject to approval, the two

new CSZs recommended by this report will be included in the future rotation schedule for the ASE program.

The total number of ASE cameras in use will not change.

Alternatives Reviewed

Alternatives to the recommendations of this report follow:

- Do not approve the recommended Community Safety Zones. This is not recommended as the CSZs are warranted in accordance with Council's Community Safety Zone Policy.

Relationship to Council Strategic Priorities

Community Safety Zones are a component of the Vision Zero Road Safety initiative which is an identified action under the 'Equitable Region' strategic focus area. The Equitable Region focus is to "provide opportunities for a safe and inclusive Niagara by listening and responding to our community needs and planning for future growth".

Other Pertinent Reports

A listing of other pertinent reports is attached as Appendix 3.

Prepared by:

Scott Fraser, P.Eng.
Associate Director, Transportation
Planning
Transportation Services

Recommended by:

Terry Ricketts, P.Eng.
Commissioner of Public Works
Public Works Department

Submitted by:

Ron Tripp, P.Eng.
Chief Administrative Officer

This report was prepared in consultation with Peter Vujic, Manager Road Safety; Manny Rataul, Project Manager Road Safety and reviewed by Frank Tassone, Director Transportation Services; Janet Rose, Communications Consultant; Brian McMahon, Program Financial Specialist; Renee Muzzell, Manager Program Financial Support; Miranda Vink, Manager Court Services; Jackie Foley, Manager Prosecution & Collection, and Donna Gibbs, Director Legal and Court Services.

Appendices

- | | |
|------------|--|
| Appendix 1 | Proposed Community Safety Zones |
| Appendix 2 | Community Safety Zone Warrant Scorecards |
| Appendix 3 | Other Pertinent Reports |

PW 4-2025 Appendix 1

Proposed Community Safety Zones

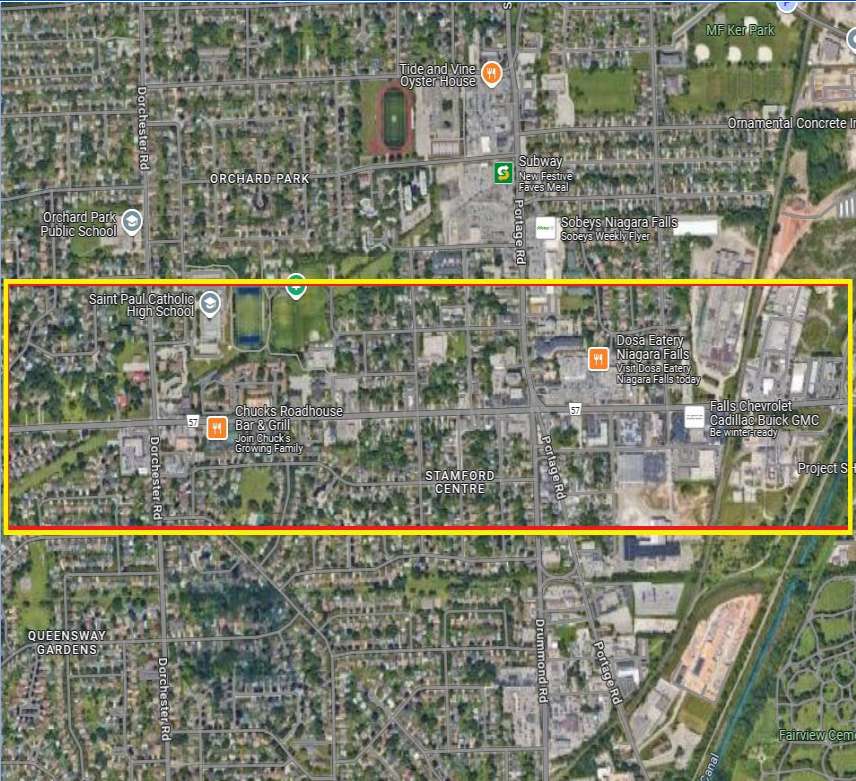

Municipality	Road Name	Regional Road	From	To	Warrant Score
Niagara Falls	Thorold Stone Road	57	Stanley Avenue (RR102)	Rolling Acres Drive	29
St. Catharines	Pelham Road	69	Glendale Avenue (RR89)	First Street Louth	25

Updated Community Safety Zones

Municipality	Road Name	Regional Road	From	To	Warrant Score
Grimsby	Main Street East	81	Bartlett Avenue (RR14)	Cemetery Road	32
Pelham	Highway 20 East	20	Rice Road	Lookout Street	25

PW 4-2025 - Appendix 2 - Warrant Scorecards


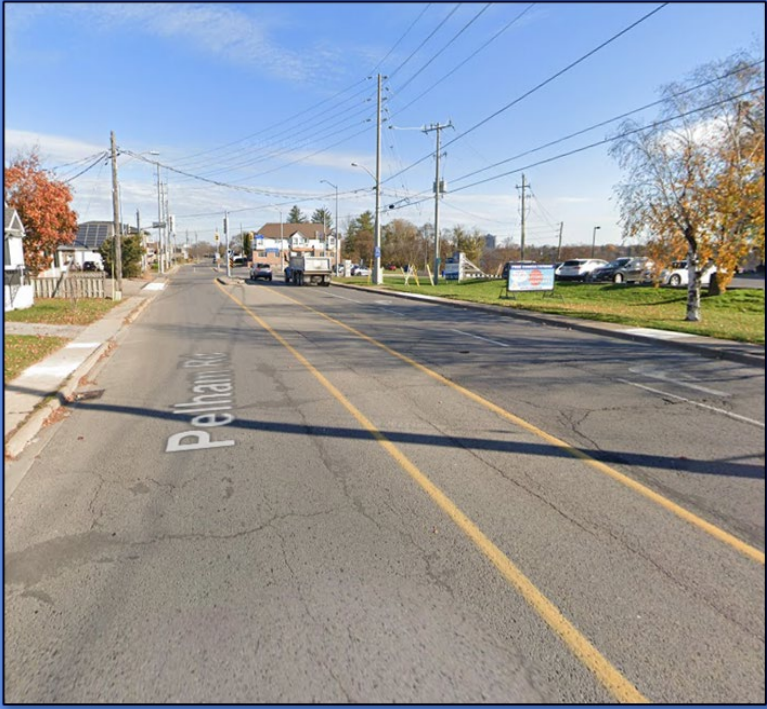
New Community Safety Zone – Thorold Stone Road

Location: Regional Road 57 (Thorold Stone Road) between Regional Road 102 (Stanley Avenue) & Rolling Acres Drive	Adjacent Land Use: Saint Paul Catholic, Notre Dame Catholic, John Marshal Public, EE Michelson Park, Glengate Park
Posted Speed: 50 km/h	Distance: 2.30 km
Municipality: City of Niagara Falls	
Location	Typical Cross Section
	

Warrant Scoresheet

Category	Criteria	Result	Score
# of Fatal and Injury Collisions	5 points per fatal or injury pedestrian or cyclist collisions per year (Result rounded up to next whole number)	1 fatal or injury collision/year	5
Operating Speed vs. Posted Speed	3 points for > 15 km/hr above, 2 points for 5 – 15 km/hr above, and 1 point for < 5 km/hr above	16 km/h	3
Average Daily Traffic Volume	3 points for > 20, 000 AADT, 2 points for 10, 000 – 20, 000 AADT, and 1 point for < 10, 000 AADT	20,400 AADT	3
# of Lanes	3 points for > 4 lanes, 2 points for 3 or 4 lanes, and 1 point for 2 lanes	4 lanes	3
% Coverage of Sidewalks	3 points for < 25%, 2 points for 25 – 75%, and 1 point for > 75%	100% coverage	1
Truck Volume	3 points for > 5%, 2 points for 3 – 5%, and 1 point for < 3% (Highest % of truck traffic along road segment at any intersection)	3% truck volume	2
Pedestrians Crossing or Parallel (8-hour period)	3 points for > 100, 2 points for 50 – 100, and 1 point for < 50 (Highest number of pedestrians crossing or walking parallel at any intersection)	218 pedestrians crossing	3
Intersections and Driveways (per km)	3 points for > 30, 2 points for 10 to 30, and 1 point for < 10	49 intersections or driveways per km	3
Land Use	3 points for schools, 2 points for retirement homes, and 1 point for other sensitive land uses	School (3), Park (2)	11
Total Score			34

New Community Safety Zone – Pelham Road

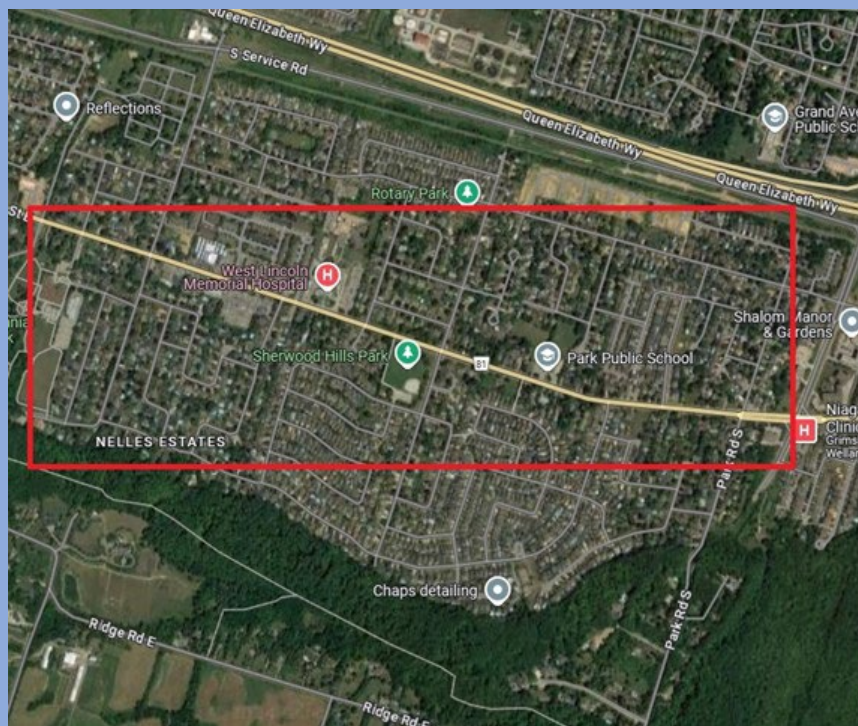
Location: Regional Road 69 (Pelham Road) between Regional Road 89 (Glendale Avenue) and First Street Louth	Adjacent Land Use: Power Glen School Rotary Park, Extendicare, Brockview Church
Posted Speed: 50 km/h	Distance: 2.5 km
Municipality: City of St. Catharines	
Location	Typical Cross Section
	

Warrant Scoresheet

Category	Criteria	Result	Score
# of Fatal and Injury Collisions	5 points per fatal or injury pedestrian or cyclist collisions per year (Result rounded up to next whole number)	1 fatal or injury collision/year average	5
Operating Speed vs. Posted Speed	3 points for > 15 km/hr above, 2 points for 5 – 15 km/hr above, and 1 point for < 5 km/hr above	13 km/h	2
Average Daily Traffic Volume	3 points for > 20, 000 AADT, 2 points for 10, 000 – 20, 000 AADT, and 1 point for < 10, 000 AADT	5,400 AADT	1
# of Lanes	3 points for > 4 lanes, 2 points for 3 or 4 lanes, and 1 point for 2 lanes	3 lanes	2
% Coverage of Sidewalks	3 points for < 25%, 2 points for 25 – 75%, and 1 point for > 75%	90% coverage	1
Truck Volume	3 points for > 5%, 2 points for 3 – 5%, and 1 point for < 3% (Highest % of truck traffic along road segment at any intersection)	5% truck volume	2
Pedestrians Crossing or Parallel (8-hour period)	3 points for > 100, 2 points for 50 – 100, and 1 point for < 50 (Highest number of pedestrians crossing or walking parallel at any intersection)	31 pedestrians crossing	1
Intersections and Driveways (per km)	3 points for > 30, 2 points for 10 to 30, and 1 point for < 10	57 intersections or driveways per km	3
Land Use	3 points for schools, 2 points for retirement homes, and 1 point for other sensitive land uses	School (1), Park (2), Church (1), Nursing Home (1)	8
Total Score			25

Updated Community Safety Zone – Main Street East

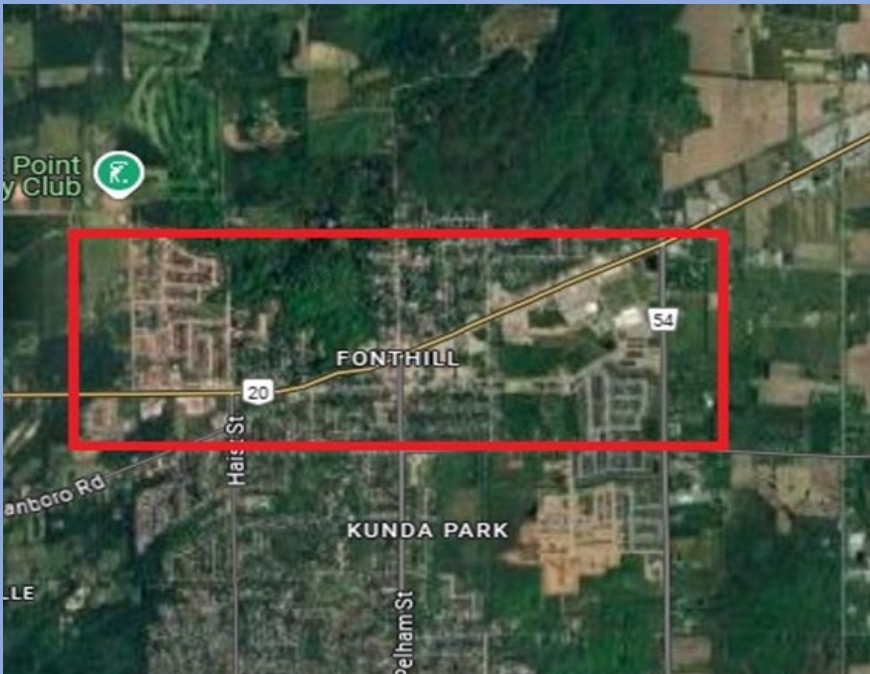

Location: Regional Road 81 (Main Street East) between Regional Road 14 (Bartlett Avenue) & Cemetery Road	Adjacent Land Use: Nelles Public School, Park Public School, Centennial Park, Sherwood Park
Posted Speed: 50 km/h	Distance: 2.5 km
Municipality: Town of Grimsby	Ranking: 8 (tied)
Location	Typical Cross Section



Warrant Scoresheet

Category	Criteria	Result	Score
# of Fatal and Injury Collisions	5 points per fatal or injury pedestrian or cyclist collisions per year (Result rounded up to next whole number)	2 fatal or injury collisions/year	10
Operating Speed vs. Posted Speed	3 points for > 15 km/hr above, 2 points for 5 – 15 km/hr above, and 1 point for < 5 km/hr above	7 km/h	2
Average Daily Traffic Volume	3 points for > 20, 000 AADT, 2 points for 10, 000 – 20, 000 AADT, and 1 point for < 10, 000 AADT	12,000 AADT	2
# of Lanes	3 points for > 4 lanes, 2 points for 3 or 4 lanes, and 1 point for 2 lanes	3 lanes	2
% Coverage of Sidewalks	3 points for < 25%, 2 points for 25 – 75%, and 1 point for > 75%	100% coverage	1
Truck Volume	3 points for > 5%, 2 points for 3 – 5%, and 1 point for < 3% (Highest % of truck traffic along road segment at any intersection)	2% truck volume	1
Pedestrians Crossing or Parallel (8-hour period)	3 points for > 100, 2 points for 50 – 100, and 1 point for < 50 (Highest number of pedestrians crossing or walking parallel at any intersection)	115 pedestrians crossing	3
Intersections and Driveways (per km)	3 points for > 30, 2 points for 10 to 30, and 1 point for < 10	45 intersections or driveways per km	3
Land Use	3 points for schools, 2 points for retirement homes, and 1 point for other sensitive land uses	School (2), Park (2)	8
Total Score			32

Updated Community Safety Zone – Highway 20 East

Location: Regional Road 20 (Highway 20 East) between Regional Road 54 (Rice Road) and Lookout Street	Adjacent Land Use: Marlene Stewart Streit Park, Fonthill United Church, Shorthills Retirement Community, Saint Alexander Catholic Elementary School, Gordan Klinger Park
Posted Speed: 50 km/h	Distance: 2.65 km
Municipality: Town of Pelham	
Location	Typical Cross Section
	

Warrant Scoresheet

Category	Criteria	Result	Score
# of Fatal and Injury Collisions	5 points per fatal or injury pedestrian or cyclist collisions per year (Result rounded up to next whole number)	1 fatal or injury collision/year	5
Operating Speed vs. Posted Speed	3 points for > 15 km/hr above, 2 points for 5 – 15 km/hr above, and 1 point for < 5 km/hr above	6 km/h	2
Average Daily Traffic Volume	3 points for > 20, 000 AADT, 2 points for 10, 000 – 20, 000 AADT, and 1 point for < 10, 000 AADT	19,000 AADT	2
# of Lanes	3 points for > 4 lanes, 2 points for 3 or 4 lanes, and 1 point for 2 lanes	5 lanes	3
% Coverage of Sidewalks	3 points for < 25%, 2 points for 25 – 75%, and 1 point for > 75%	100% coverage	1
Truck Volume	3 points for > 5%, 2 points for 3 – 5%, and 1 point for < 3% (Highest % of truck traffic along road segment at any intersection)	7% truck volume	3
Pedestrians Crossing or Parallel (8-hour period)	3 points for > 100, 2 points for 50 – 100, and 1 point for < 50 (Highest number of pedestrians crossing or walking parallel at any intersection)	76 pedestrians crossing	2
Intersections and Driveways (per km)	3 points for > 30, 2 points for 10 to 30, and 1 point for < 10	29 intersections or driveways per km	2
Land Use	3 points for schools, 2 points for retirement homes, and 1 point for other sensitive land uses	School (1), Church (1), Retirement home (2), Park (2)	10
Total Score			30

PW 4-2025 Appendix 3

Other Pertinent Reports

[PW 34-2023 - Community Safety Zone Policy and Warrant](#)

<https://pub-niagararegion.escribemeetings.com/Meeting.aspx?Id=3ef66bf7-5d0c-4241-91d1-7b600bbd87fa&Agenda=Agenda&lang=English&Item=14&Tab=attachments>

[PW 49-2021 - Designation of a Community Safety Zone on Regional Road 20 Lundy's Lane in the City of Niagara Falls](#)

<https://pub-niagararegion.escribemeetings.com/Meeting.aspx?Id=d58a4bbf-5b58-4a61-9439-46a1d0e3c407&Agenda=Merged&lang=English&Item=14&Tab=attachments>

[PW 4-2020 - Vision Zero Road Safety Program Designation of Community Safety Zones around Schools](#)

<https://pub-niagararegion.escribemeetings.com/Meeting.aspx?Id=04564006-29bd-4fd8-a3fa-4da4f79638dd&Agenda=Merged&lang=English&Item=13&Tab=attachments>
PW 38-2019 - Community Safety Zones