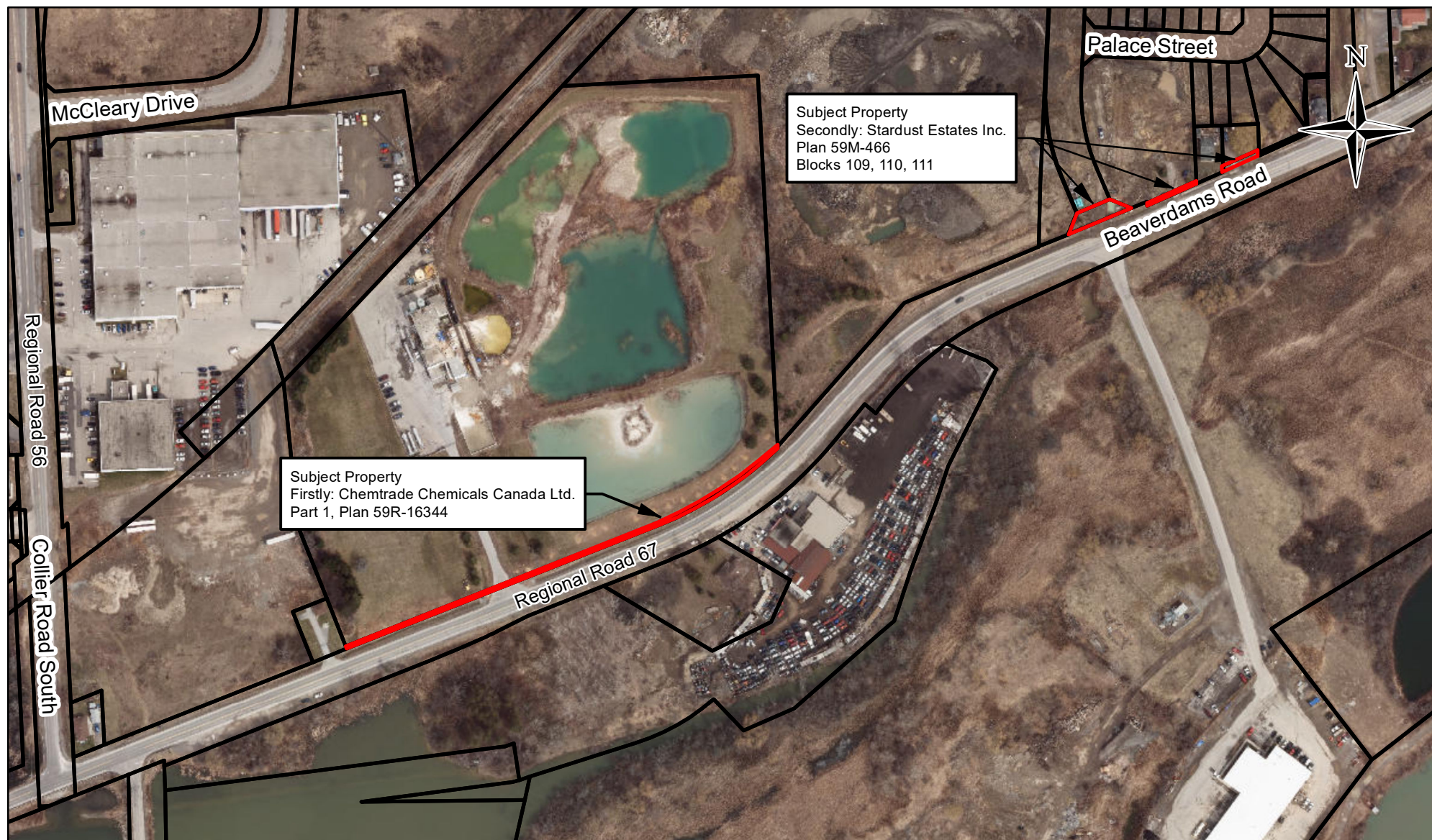


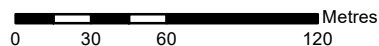
Firstly from: Chemtrade Chemicals Canada Ltd & Secondly From: Stardust Estates Inc.



**ILLUSTRATION SHOWING APPROXIMATE LOCATION OF ROAD WIDENING
FIRSTLY FROM: CHEMTRADE CHEMICALS CANADA LTD.
SECONDLY FROM: STARDUST ESTATES INC,
ALONG REGIONAL ROAD No.67 (BEAVER DAMS ROAD)
EAST OF REGIONAL ROAD 56 (COLLIER ROAD SOUTH)
CITY OF THOROLD**



SCALE = 1:3,000



DISCLAIMER

This map was compiled from various sources and is current as of OCTOBER 1, 2019.
The Region of Niagara makes no representations or warranties whatsoever, either expressed or implied,
as to the accuracy, completeness, reliability, and currency of the information shown on this map.
© 2015 Niagara Region and its suppliers. Projection is UTM, NAD 83, Zone 17. Airphoto (Spring 2018)

**Transportation Services
Surveys & Property Information
IR-19-307 Date: 2019-10-04**